

CLIENT

GameStop

Lu+Smith ENGINEERS

5243 HICKORY PARK DRIVE, SUITE C
GLEN ALLEN, VA 23059
P: 804.925.2600 F: 804.925.2170
WWW.LSENGINEERS.NET



PROJECT NAME AND ADDRESS

GAMESTOP #2444
THE SHOPS AT STRATFORD HILLS
7017 FOREST HILL AVENUE
RICHMOND, VIRGINIA 23235

GENERAL NOTES:

- A. THE SCOPE OF WORK FOR THIS PROJECT IS ADDING A NEW DEMISING WALL AND PROVIDING A NEW TENANT IN EXISTING MULTI-TENANT COMMERCIAL SPACE.
- B. EXIT LIGHTING AND EMERGENCY LIGHTING SHALL BE WIRED AHEAD OF LOCAL SWITCHING.
- C. EXTERIOR LIGHTING IS EXISTING TO REMAIN.
- D. NO EXPOSED CONDUIT ALLOWED UNLESS DIRECTED BY GAMESTOP PROJECT MANAGER.
- E. ALL NEW LIGHT SWITCHES TO BE INSTALLED IN STOCK ROOM NEXT TO STOCKSALES DOOR.
- F. ALL NEW TELEPHONE, DATA, & ELECTRICAL OUTLETS TO BE MOUNTED 18" A.F.F. UNLESS OTHERWISE NOTED.

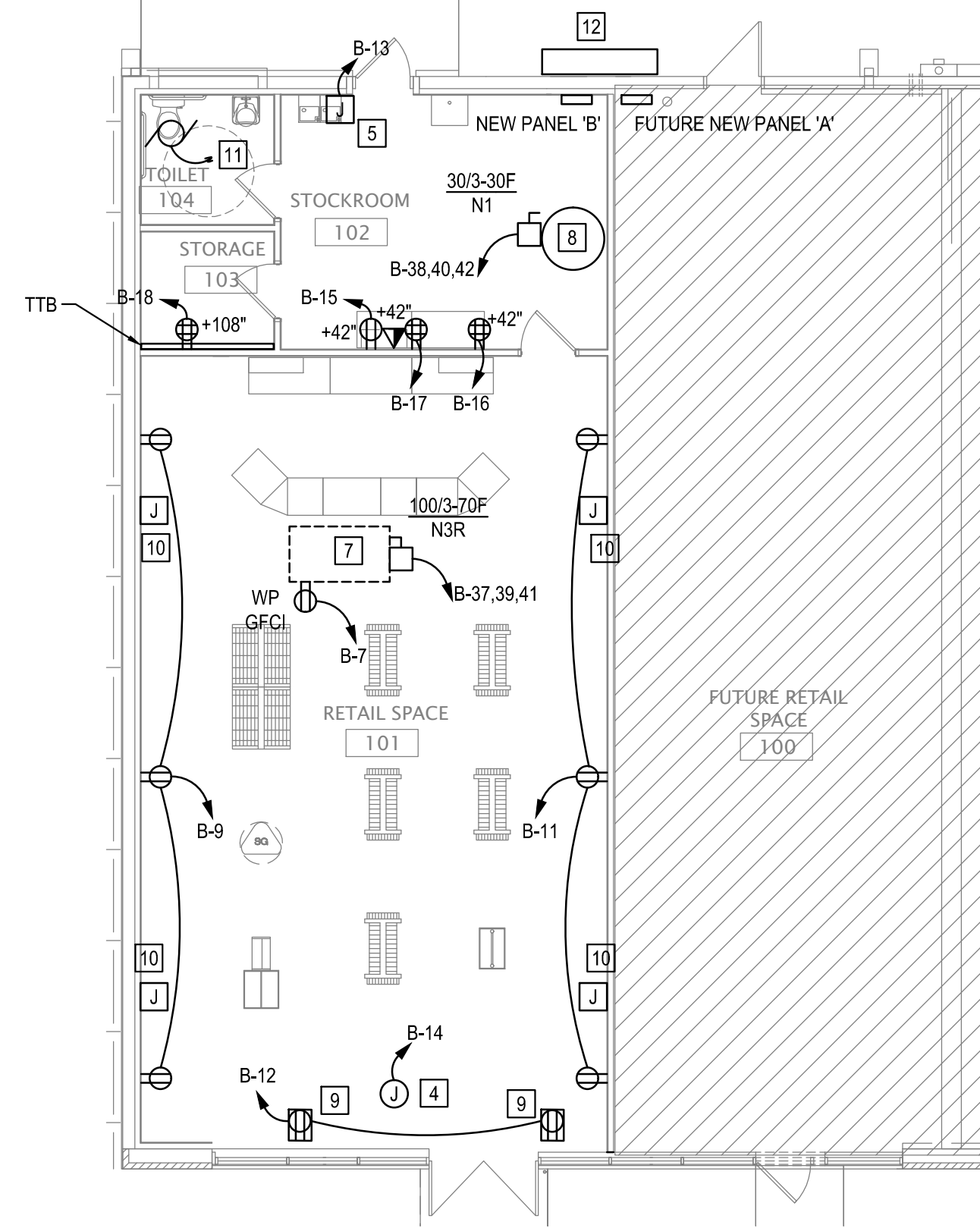
EGRESS LIGHTING COMPLIANCE

THE CONTRACTOR SHALL HIRE THE SERVICES OF A THIRD PARTY MASTER ELECTRICIAN OR PROFESSIONAL DESIGN ENGINEER TO CONDUCT A FIELD TEST MEASURING THE EGRESS LIGHTING OUTPUT DURING NON-SUNLIGHT HOURS. A REPORT SHALL BE GENERATED FROM THIS TEST AND PROVIDED TO THE CITY OF RICHMOND SHOWING THE EMERGENCY LIGHTING MEETS OR EXCEEDS THE IBC 2009 SECTION 1006.

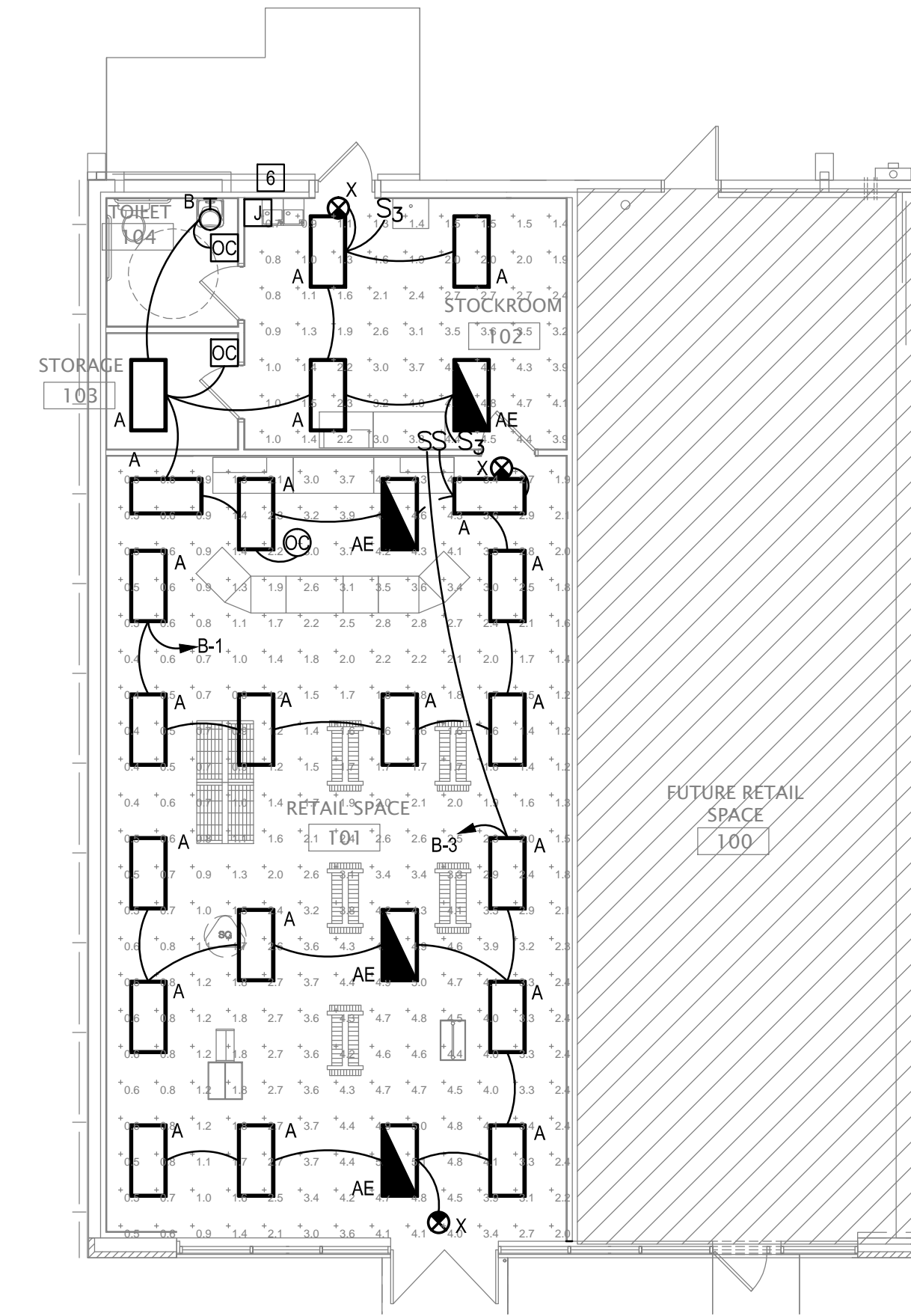
WHERE THE THIRD PARTY INSPECTION DETERMINES THAT THE MINIMUM FOOT-CANDLE LEVEL HAS NOT BEEN MET, PROVIDE ADDITIONAL EMERGENCY LIGHTING TO MEET MINIMUM REQUIREMENTS.

PLAN KEYNOTES:

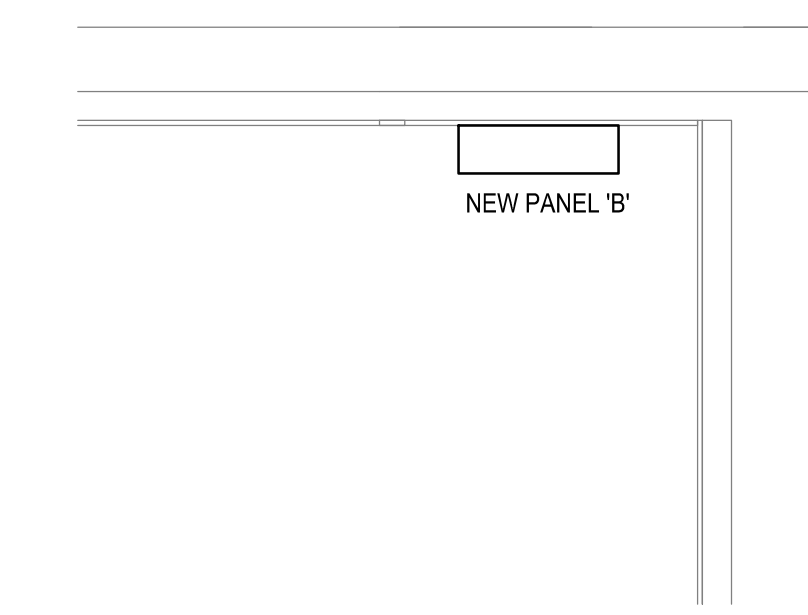
- 1 THE CIRCUITS USED TO POWER THESE RECEPTACLES SHALL NOT BE USED FOR ANY OTHER PURPOSE. CIRCUITS SHALL NOT SHARE NEUTRAL OR GROUND WITH OTHER EQUIPMENT. SEPARATE POWER NEUTRAL AND INSULATED GROUND WIRES, MINIMUM SIZE #12 AWG SHALL BE RUN TO CIRCUIT BREAKER PANEL BOARD WHERE GROUND WIRE SHALL BE TIED TO THE GROUND TERMINAL ISOLATED FROM NEUTRAL. DO NOT USE CONDUIT FOR GROUNDING AS THIS MAY NOT BE CONTINUOUS. RECEPTACLES SHALL BE HUBBELL #15-5362.
- 2 PROVIDE 3/4" CONDUIT AND WIRE FOR POWER TO P.O.S. AND GENERAL RECEPTACLES AND 1" CONDUIT WITH PULL STRING FOR TELEPHONE OUTLETS TO BE LOCATED AT CABINET BOTTOM ROUTED BACK TO THE TELEPHONE BOARD. ROUTE CONDUITS UNDER CONCRETE FLOOR AND LEAVE A 12" FLEX WHP FOR EACH POWER CIRCUIT CONDUIT REQUIRED. STUB CONDUIT INTO CABINET BASE AND RUN THROUGH CABINET BASE TO EACH RECEPTACLE. COORDINATE EXACT CONFIGURATION WITH TENANT REP. AND LOCATION WITH FUTURE INSTALLER. REFER TO PROTOTYPE DRAWINGS FOR EXACT INFORMATION.
- 3 QUAD RECEPTACLE FLUSH MOUNTED IN WALL AT 48" AFF & A DUPLEX RECEPTACLE FLUSH MOUNTED IN WALL AT 108" AFF ON BOTH SIDES OF CASHWRAP IN CONTINUOUS CONDUIT RUN.
- 4 PROVIDE CONNECTION FOR SIGN CIRCUIT. FIELD VERIFY EXACT LOCATION PRIOR TO ROUGH-IN.
- 5 CONTRACTOR TO INSTALL A J-BOX ABOVE THE HINGE SIDE OF THE REAR EXIT DOOR MOUNT POWER SUPPLY FOR TRIDENT SYSTEM. G.C. TO PLACE J-BOX ON DEDICATED CIRCUIT.
- 6 PROVIDE TORK 24-HOUR TIMECLOCK MODEL #1101 FOR CONTROL OF LIGHTING CIRCUITS.
- 7 BASIS OF DESIGN MECHANICAL UNIT LOCATED ON THE ROOF. FIELD VERIFY EXACT LOCATION/REQUIREMENTS PRIOR TO ROUGH-IN.
- 8 BASIS OF DESIGN WATER HEATER. FIELD VERIFY EXACT LOCATION/REQUIREMENTS PRIOR TO ROUGH-IN.
- 9 DUPLEX RECEPTACLE FLUSH MOUNTED IN CEILING PER NEC 210-62.
- 10 PROVIDE JUNCTION BOX AND EMPTY CONDUIT WITH PULLSTRING STUBBED ABOVE THE CEILING. FIELD VERIFY EXACT LOCATION/REQUIREMENTS PRIOR TO ROUGH-IN.
- 11 WIRE EXHAUST FAN VIA CIRCUIT/SWITCHING THAT CONTROL THE LIGHTING IN THIS AREA.
- 12 LOCATION FOR NEW ELECTRICAL SERVICE. REFER TO SHEET E0.1 FOR MORE INFORMATION.



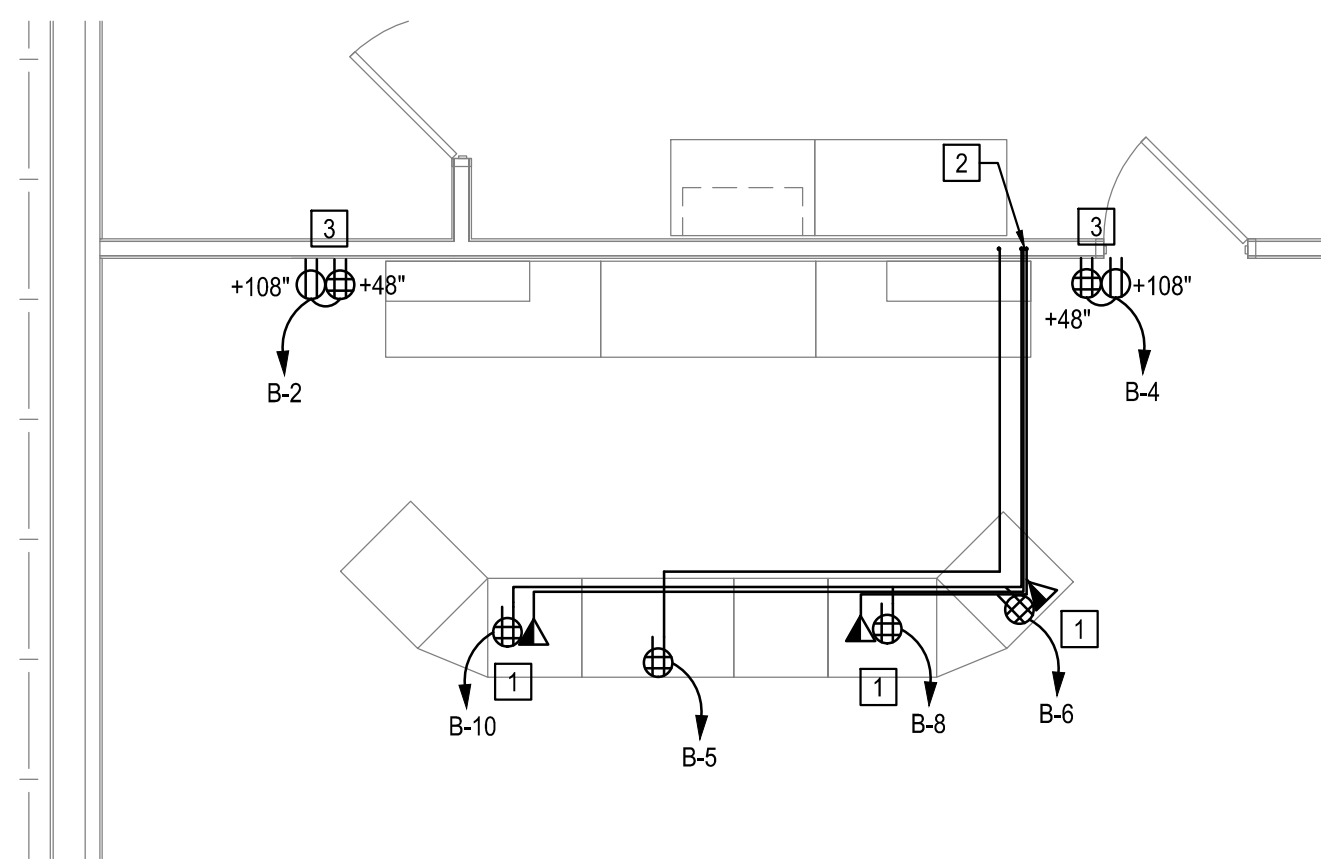
1 NEW WORK FLOOR PLAN - POWER
E2.1 SCALE: 1/8" = 1'-0"



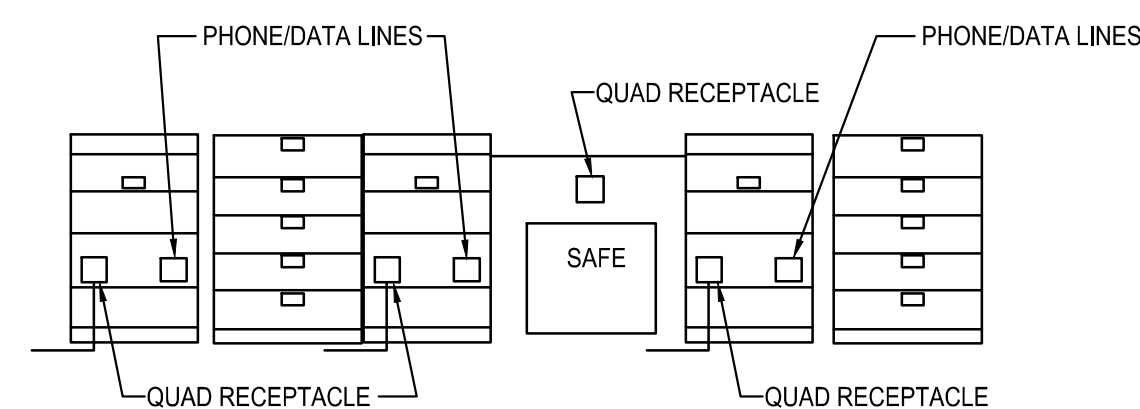
2 NEW WORK FLOOR PLAN - POWER
E2.1 SCALE: 1/8" = 1'-0"



5 ENLARGED ELECTRICAL AREA
E2.1 SCALE: 1/2" = 1'-0"

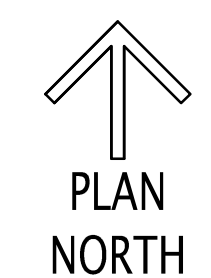
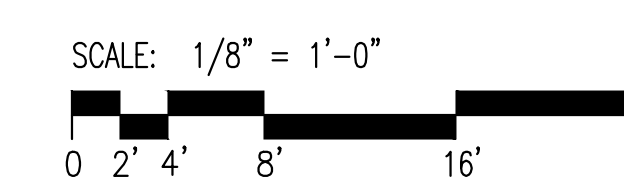
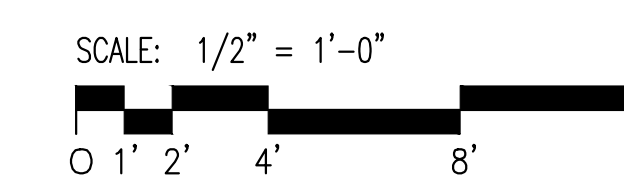


3 NEW WORK FLOOR PLAN - ENLARGED CASHWRAP
E2.1 SCALE: 1/4" = 1'-0"



4 CASHWRAP ELEVATION
E2.1 SCALE: NONE

PANELBOARD SCHEDULE				B																									
NO.	AMP	MCO	LOAD	208	Y	120	V	3PH	4	W	MOUNT:			SERVICE DISCONNECT			PANEL ASSEMBLY RATED:			22	KAIC								
CCT	BRKR	WIRE SIZE	LIGHTING	ELTG	ELTG	REC	MECH	KIT	MISC	A	B	C	CCT	BRKR	WIRE SIZE	SURFACE	LOAD	ELTG	ELTG	REC	MECH	KIT	MISC						
1	201	2#12, 1#12GND, .34"C	LIGHTING	1.4	-	-	-	-	-	1.9	1.4	-	4	201	2#12, 1#12GND, .34"C	CASHWRAP RECS	-	-	0.5	-	-	-	-						
3	201	2#12, 1#12GND, .34"C	LIGHTING	0.8	-	-	-	-	-	1.4	0.8	-	4	201	2#12, 1#12GND, .34"C	CASHWRAP RECS	-	-	0.5	-	-	-	-						
5	201	2#12, 1#12GND, .34"C	CASHWRAP GENERAL RECS	-	-	0.4	-	-	-	-	-	-	8	201	2#12, 1#12GND, .34"C	CASHWRAP RECS	-	-	0.4	-	-	-	-						
7	201	2#12, 1#12GND, .34"C	ROOFTOP WP REC	-	-	0.2	-	-	-	0.6	-	-	8	201	2#12, 1#12GND, .34"C	CASHWRAP RECS	-	-	0.4	-	-	-	-						
9	201	2#12, 1#12GND, .34"C	GENERAL RECS	-	-	0.5	-	-	-	-	0.9	-	10	201	2#12, 1#12GND, .34"C	CASHWRAP RECS	-	-	0.4	-	-	-	-						
11	201	2#12, 1#12GND, .34"C	GENERAL RECS	-	-	0.5	-	-	-	-	0.9	-	12	201	2#12, 1#12GND, .34"C	CEILING RECS	-	-	0.4	-	-	-	-						
13	201	2#12, 1#12GND, .34"C	SECURITY SYSTEM CONNECTION	-	-	-	-	-	0.2	0.4	-	-	14	201	2#12, 1#12GND, .34"C	CEILING SIGN	-	-	-	-	-	-	0.2						
15	201	2#12, 1#12GND, .34"C	DESK RECS	-	-	0.5	-	-	-	-	0.9	-	16	201	2#12, 1#12GND, .34"C	STOCKROOM REC	-	-	0.4	-	-	-	-						
17	201	2#12, 1#12GND, .34"C	DESK RECS	-	-	1.0	-	-	-	-	2.0	1.8	201	2#12, 1#12GND, .34"C	TTB REC	-	-	1.0	-	-	-	-							
19	201	-	SPARE	-	-	-	-	-	-	-	-	-	20	201	-	SPARE	-	-	-	-	-	-	-						
21	201	-	SPARE	-	-	-	-	-	-	-	-	-	22	201	-	SPARE	-	-	-	-	-	-	-						
23	201	-	SPARE	-	-	-	-	-	-	-	-	-	24	201	-	SPARE	-	-	-	-	-	-	-						
25	-	-	SPACE ONLY	-	-	-	-	-	-	-	-	-	26	-	-	SPACE ONLY	-	-	-	-	-	-	-						
27	-	-	SPACE ONLY	-	-	-	-	-	-	-	-	-	28	-	-	SPACE ONLY	-	-	-	-	-	-	-						
29	-	-	SPACE ONLY	-	-	-	-	-	-	-	-	-	30	-	-	SPACE ONLY	-	-	-	-	-	-	-						
31	-	-	SPACE ONLY	-	-	-	-	-	-	-	-	-	32	-	-	SPACE ONLY	-	-	-	-	-	-	-						
33	-	-	SPACE ONLY	-	-	-	-	-	-	-	-	-	34	-	-	SPACE ONLY	-	-	-	-	-	-	-						
35	-	-	SPACE ONLY	-	-	-	-	-	-	-	-	-	36	-	-	SPACE ONLY	-	-	-	-	-	-	-						
37	-	-	SPACE ONLY	-	-	-	-	-	-	7.1	-	-	38	-	-	SPACE ONLY	-	-	-	-	-	-	-						
39	700	3#4, 1#8GND, 1.14"C	ROOFTOP UNIT (15KW)	-	-	6.3	-	-	-	7.1	-	-	40	200	3#12, 1#12GND, .34"C	WATER HEATER (2KW)	-	-	-	-	-	-	0.8						
41	-	-	ROOFTOP UNIT (15KW)	-	-	6.3	-	-	-	7.1	-	-	42	-	-	SPACE ONLY	-	-	-	-	-	-	0.8						
				2.3	-	3.1	19	-	-	0.2	A	B	C										31						
LOAD TYPE				CONNECTED LOAD KVA				DEMAND KVA				PHASE A KVA			PHASE B KVA			PHASE C KVA			TOTAL CONNECTED KVA:			31					
INTERIOR LTG				2				3				10			10			10			TOTAL DEMAND KVA:			32					
EXTERIOR LTG				-				-				-			-			-											
RECEPTACLES				7				7				-			-			-											
AC/HEAT PUMP				19				19				-			-			-											
ELECTRIC HEAT				-				-				-			-			-											
KITCHEN				-				-				-			-			-											
MISC:				3				3				-			-			-											
25% OF LARGEST MOTOR (XXX, XX HP)				-				-				-			-			-											
				2.3				3.1				19			0.2			A			B			C			88		
				-				-				-			-			-			-			-			88		



NEW WORK ELECTRICAL FLOOR PLANS

Project NO.	16036	Sheet	
Date	06/09/2016		
Scale	AS NOTED	E2.1	