

Kitchen Equipment Schedule

Item #	Description	Manufacturer	Model #	QTY	Dimensions / Size	Voltage	Phase	Amps	BTU/hour	Floor Drain
1	Hood	Captive Aire Systems	4824-ND-2-BR	1	14'-8"					
2	Hood	Captive Aire Systems	ND-PSP-F	1	48"x24"x120"					
3	Pizza Oven	Wood Stone	WS-BL-4343	1	42-1/4"x50"x69-3/4"	120		2	80,500	
4	Sandwich Prep Refrigeration	TRUE	TUC-72	1	72-3/8"x30-1/8"	115	1	8.5		
5	Hot Well	APW-Wyott	W-43V	2	14"x30"	208/240		6.7		
6	Sandwich Press	Waring	WDG-250	1	17.5"x16"	120		15		
7	Range	US Range	G36-6R	1	35-1/2"x34-1/2"				236,000	
8	Charbroiler	Starmax	6124RCBF	1	24"x29"				80,000	
9	Salamander	US Range	GIR36	1	35-1/2"x16-5/8"				40,000	
10	4 Drawer Refrigerator	TRUE	TRCB-72	1	84"x32-1/8"	115	1	15		
11	Grill	Starmax	FTG9036	1	36"x27"				84,000	
12	Fryer	Avantco	FF400	3	15 1/2" x 30 1/4"				120,000	
13	N/A									
14	6 Drawer Refrigerator	TRUE	TFP-72-30M-D-6	1	72-1/8"x33-1/2"	115	1	5.1		
15	Double Stack Oven	Hobart	HEC502	1	40-1/4"x41-1/8"	208/230	1 or 3			
16	4 Compartment Sink			1	112" W					
17	Soda			1	23"x23"					
18	Tea Brewer	Bunn	TB3Q	1	10" x 22"	120	14.4			
19	Ice Maker	Manitowoc	SY1804A	1	48"x24.5	208-230	1	23.5		
20	Ice Bin			1	48"					
21	6 burner	Star	806HA	1	24"x30"				180,000	
22	N/A									
23	Handsink			3						
24	Dishwasher	Ecolab	ES-2000HT	1	32 1/4"W x 29 3/4"	220V	1 or 3	68.8		2" Minimum
25	Grease Interceptor	Boos		1						
26	Walk-in Cooler	Norlake	8101	1	8'-0"x10'-0"x7'-4"	220V	3			
27	Walk-in Freezer	Norlake	8101	1	8'-0"x10'-0"x7'-4"	220V	3			
28	Reach-in Refrigerator	TRUE	TS-49	2	55" x 30"	115V	1	5.8		
29	POS system									

KITCHEN EQUIPMENT SCHEDULE

ELECTRICAL SYMBOLS / NOTES

① EXHAUST HOOD CONTROL CABINET: SUPPLIED BY CAPTIVE AIR AS UL LISTED SYSTEM - CONTROLS SUPPLY FAN, 2 EXHAUST FANS, GAS VALVE AND FIA NOTIFICATION DEVICE.

◇ KITCHEN EQUIPMENT

⊕ DUPLEX OR GFI RECEPT.

⊕ SPECIAL RECEPT PER EQUIPMENT REQUIREMENTS

S SWITCH

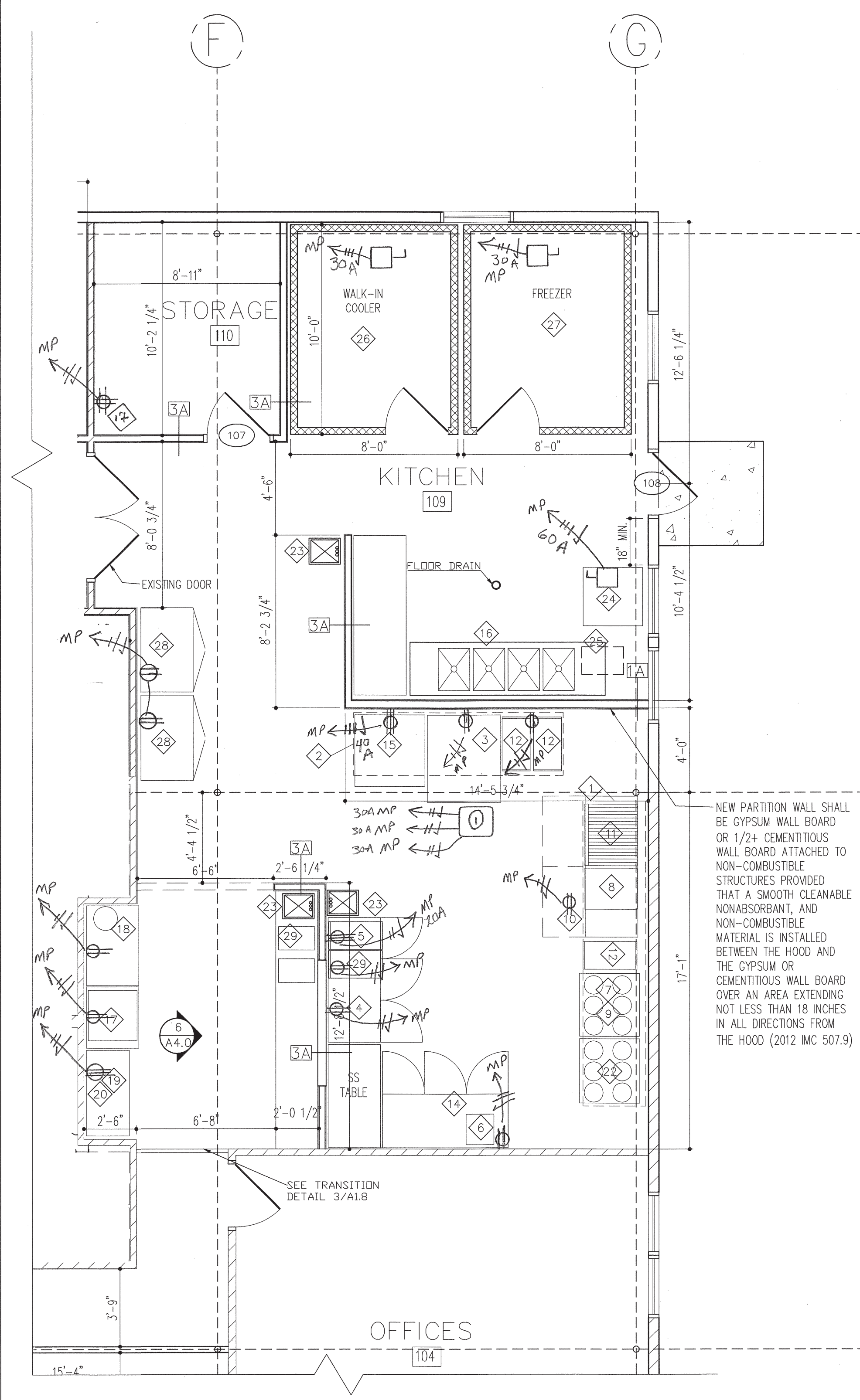
□ SAFETY SWITCH

- ALL CIRCUITS Routed TO EXISTING PANELS
- ALL RECEPTS IN KITCHEN TO BE GFI.
- ALL WORK PER LATEST EDITION OF NEC
- WIRING METHOD: EMT / MC CABLE
- ALL ELECTRICAL EQUIPMENT UNDER HOOD TO SHUT TRIP OFF UPON ACTIVATION OF HOOD SUPPRESSION SYSTEM



- SYMBOLS:**
- 3A WALL TYPE
 - 101 ROOM NUMBER
 - ◇ EQUIPMENT NUMBER
 - ① WINDOW NUMBER
 - ① DOOR NUMBER
 - ② ENLARGED PLAN
 - EXISTING CONSTRUCTION

- GENERAL NOTES:**
- INTERIOR WALL PARTITIONS ARE 3-5/8" METAL STUD UNLESS OTHERWISE NOTED.
 - CONTRACTOR TO VERIFY ALL EXISTING DIMENSIONS AND CONDITIONS.
 - REFER TO 44.0/A5.0 FOR PLAN DETAILS, WALL TYPES AND INTERIOR ELEVATIONS.
 - REFER TO MEP DRAWINGS FOR ALL ELECTRICAL & MECHANICAL DETAILS.
 - IN LIEU OF DETAILS, SEE MANUFACTURER'S SPECIFICATION FOR INSTALLATION DETAILS AND REQUIREMENTS.



Robert J. Bowditch
 Robert J. Bowditch
 ESSENTIAL BY:
 HAROLD Electric
 310 BRANSBURY AVE
 FREDERICKSBURG VA
 540 373-7879
 CLASS A 2701 028856
 MASTER 2710 015389

ADDENDA / REVISIONS

DATE	USE	INITIALS
2016.03.15	DRAFT	KP
2016.09.07	REVIEW	KMP

Project:
6 Beers and a Goat Brewery
Stafford, VA

Sheet:
Kitchen Equipment Plan
Equipment Schedule

Issue:

Date: 2016.09.07

Sheet No:
E1.0



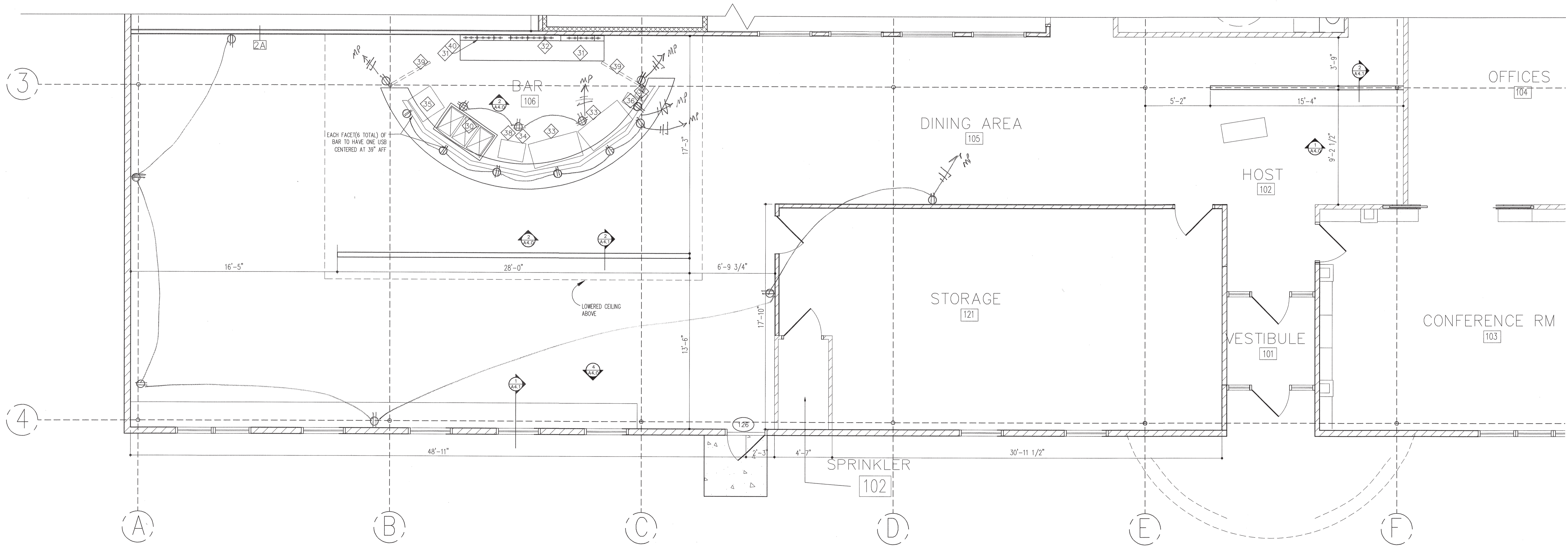
Item #	Description	Manuf	Model #	Quantity	Dimensions / Size	Voltage	Phase	Breaker	Amps		Water Supply	Drain	Floor Drain / Sink	Notes
30	3 compartment sink (bar)	Advanced Tabco	FC-3-1515	1	50"Wx20-1/2"D									OR SIMILAR
31	Bar top glass rinser	Micromatic	MM-5821	1	6-3/8"X6-3/8"									SRF MNTD. OR SIMILAR
32	Bar taps			20										INSTALLED BY OTHER
33	Undercounter coolers	Avantco	UBB-24-48G 48"	2	48"Wx24"D	115	1		7.2					OR SIMILAR
34	Soda Gun Dispenser (bar unit)			1										INSTALLED BY OTHER
35	Dishwasher	ECOLAB	U-HT	1	24"Wx25"Dx33.75"H	240	1		60		1/2" min.	1" min.		FUTURE
36	POS Station			2										INSTALLED BY OTHER
37	POS printer			1										INSTALLED BY OTHER
38	Ice Bin	Advanced Tabco	PRI-19-24-10	1	24"Wx18"D									OR SIMILAR
39	TV			2	48"									OWNER PROVIDED
40	Drip Tray with Drain	Micromatic	DP-120D	TBD	16"x5"									SRF MNTD. OR SIMILAR

- SYMBOLS:**
- 3A WALL TYPE
 - 101 ROOM NUMBER
 - 1 EQUIPMENT NUMBER
 - 1 WINDOW NUMBER
 - 102 DOOR NUMBER
 - 2 ENLARGED PLAN
 - EXISTING CONSTRUCTION

- GENERAL NOTES:**
1. INTERIOR WALL PARTITIONS ARE 3-5/8" METAL STUD UNLESS OTHERWISE NOTED.
 2. CONTRACTOR TO VERIFY ALL EXISTING DIMENSIONS AND CONDITIONS.
 3. REFER TO A4.0/A5.0 FOR PLAN DETAILS, WALL TYPES AND INTERIOR ELEVATIONS.
 4. REFER TO MEP DRAWINGS FOR ALL ELECTRICAL & MECHANICAL DETAILS.
 5. IN LIEU OF DETAILS, SEE MANUFACTURER'S SPECIFICATION FOR INSTALLATION DETAILS AND REQUIREMENTS.

BAR EQUIPMENT SCHEDULE

1



THEORETICAL BY:
 HAROLD'S ELECTRIC
 310 BURNSIDE AVE
 FREDERICKSBURG VA
 540 393-7879
 CLASS A 270120856
 MASTER 271005389
 ROBERT H. BOUTCHARD JR.
 ROBERT H. BOUTCHARD JR.

ADDENDA / REVISIONS

DATE	USE	INITIALS
2015.07.21	REVIEW	MTC
2016.09.07	REVIEW	KMP

THIS DRAWING IS THE PROPERTY OF SPACES DESIGN STUDIO, LLC. IT SHALL NOT BE REPRODUCED OR USED FOR ANY OTHER PROJECT IN PART OR IN WHOLE WITHOUT WRITTEN PERMISSION FROM SPACES DESIGN STUDIO, LLC. ©2015 SPACES DESIGN STUDIO, LLC.

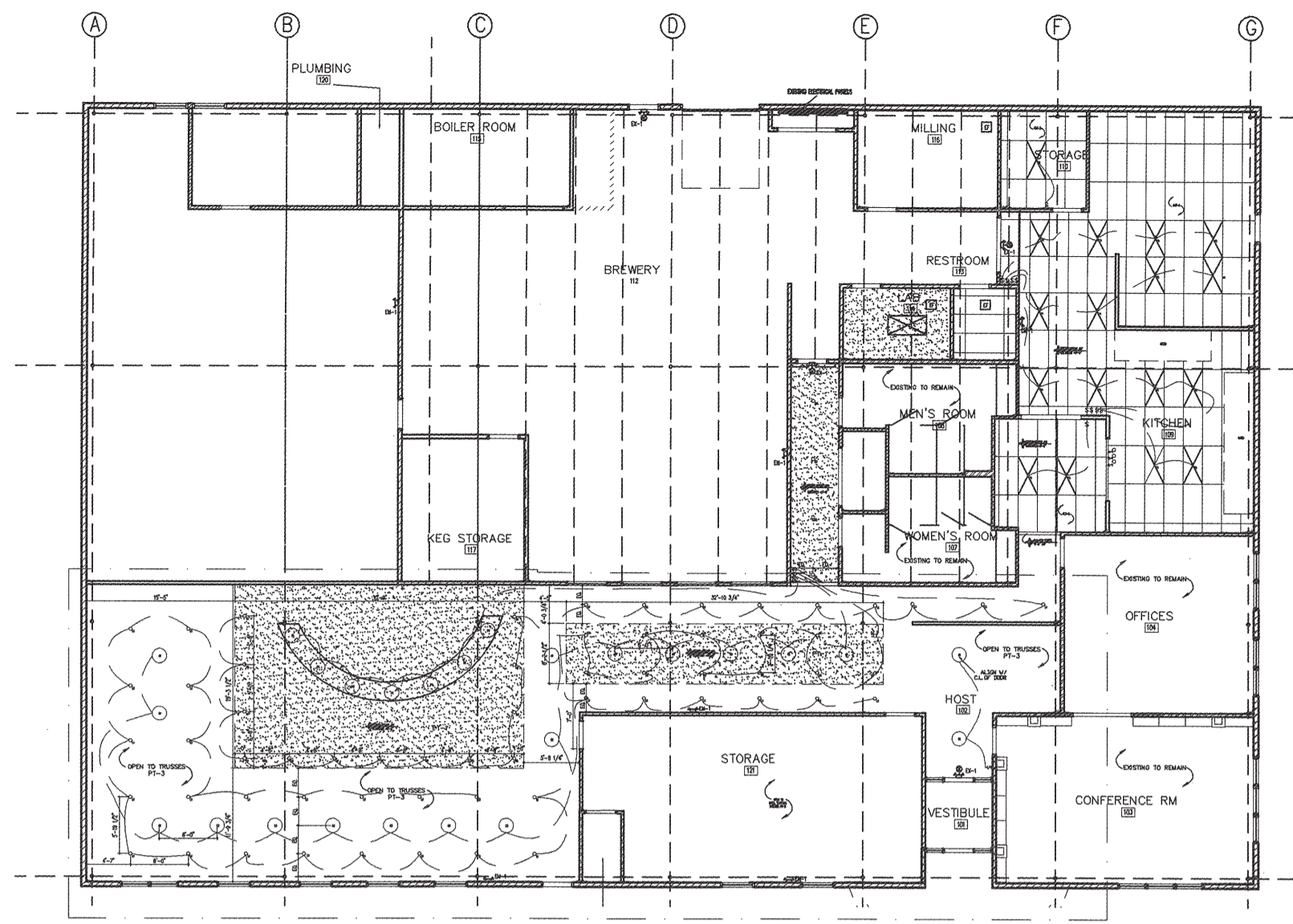
BAR EQUIPMENT PLAN

1/4"=1'-0" 2

Project:
6 Bears and a Goat Brewery
Stafford, VA
Sheet:
Bar Equipment Plan
Equipment Schedule
Issue:
 Date: 2016.09.07
 Sheet No: E1.1



Lighting Schedule								
Item #	Qty.	Description	Manufacturer	Model	Mounting	Lamp Type	Lamp Qty.	Remarks
P1	7	PENDANT	BARN LIGHT ELECTRIC	HAMPTON CHAIN HUNG GLOBE PENDANT 1609	54 IN. CHAIN HUNG	INCANDESCENT	1	100 WATTS/12 IN. SHADE
L1	37	FLUSH MOUNT BULB FITTING	CRAFTMADE	K212-P WHITE PLASTIC ONE PIECE KEYLESS LAMP HOLDER	B/O TRUSS	INCANDESCENT	1	
R1	25	RECESSED CAN	LITHONIA	4BP MW LED 30K90CR1	GYP. CEILING	LED	1	10.3 WATTS
F1	17	2x4 FLUORESCENT	LITHONIA	2GTL 4 30L LP835	CEILING GRID			128 WATTS
HL-1	3	HEAT LAMP						
C1	18	11' FROSTED GLOBE SHADE	ELK LIGHTING	10710/1-LED	5 IN. BACKPLATE	LED	1	60 WATTS
EM1	TBD	EMERGENCY LIGHT	DUAL LITE	LZ SERIES	WALL			
X1	TBD	EXIT LIGHTING	DUAL LITE	HCX SERIES	WALL DR CEILING			W/ BATTERY BACKUP



REFLECTED CEILING PLAN KEY 1/16"=1'-0" 1

- SYMBOLS:**
- 3A WALL TYPE
 - 101 ROOM NUMBER
 - 1 EQUIPMENT NUMBER
 - 1 WINDOW NUMBER
 - 102 DOOR NUMBER
 - ⊕ LIGHT SWITCH
 - ⊕ ELECTRICAL OUTLET
 - 2 X 4 FLUORESCENT
 - 4" LED RECESSED CAN
 - EXISTING CONSTRUCTION
 - EF EXHAUST FAN
 - EXIT LIGHT W/ BATTERY BACKUP
 - WALL MOUNTED EXIT LIGHTING

- GENERAL NOTES:**
- INTERIOR WALL PARTITIONS ARE 3-5/8" METAL STUD UNLESS OTHERWISE NOTED.
 - CONTRACTOR TO VERIFY ALL EXISTING DIMENSIONS AND CONDITIONS.
 - REFER TO A4.0 FOR PLAN DETAILS, WALL TYPES AND INTERIOR ELEVATIONS.
 - REFER TO MEP DRAWINGS FOR ALL ELECTRICAL & MECHANICAL DETAILS.
 - MEP TO DETERMINE FINAL QUANTITY & LOCATION OF EXIT / EGRESS LIGHTING
 - REFER TO MEP DRAWINGS FOR LIGHTING & ELECTRICAL DETAILS.

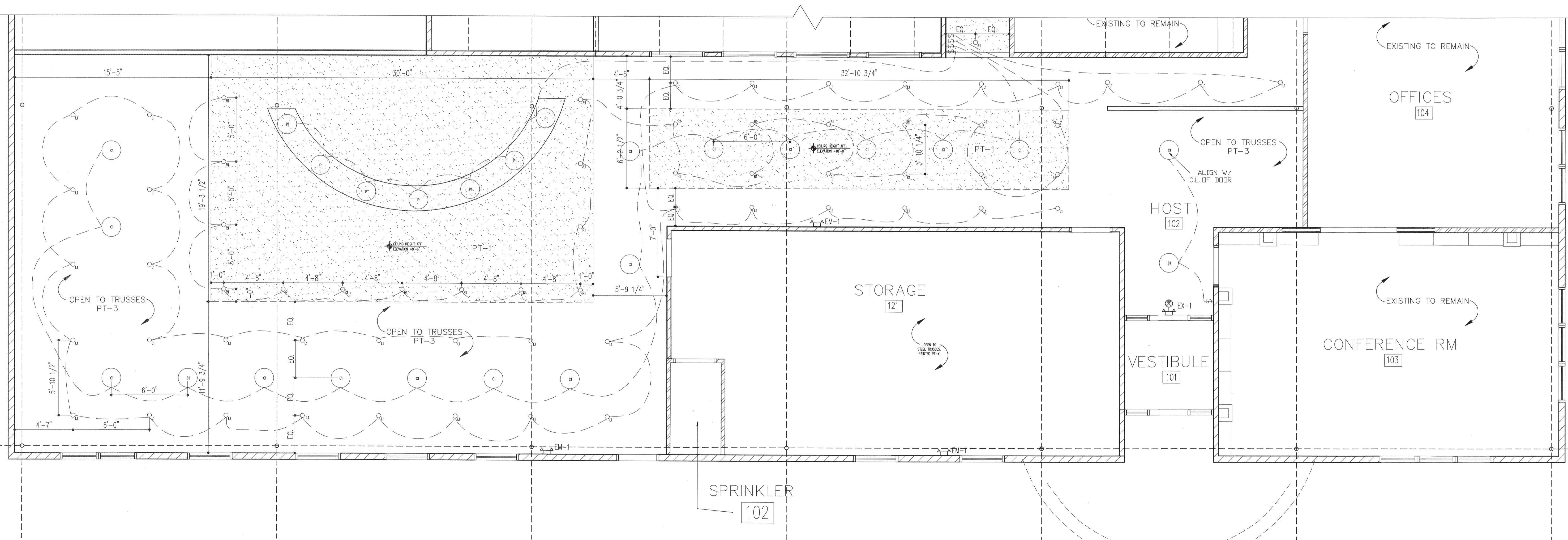
ELECTRICIAN BY
 HAROLD FRIEDRIC
 310 BURNSIDE AVE
 FREDERICKSBURG, VA
 540 373-7879
 LEAS A 2701028956
 MASTER 2710015389
 ROBERT H BOUSCHARD JR
 Robert H Bouschard Jr

ADDENDA / REVISIONS		
DATE	USE	INITIALS
2015.07.21	REVIEW	MTC
2015.09.07	REVIEW	KMP

THIS DRAWING IS THE PROPERTY OF SPACES DESIGN STUDIO, LLC. IT SHALL NOT BE REPRODUCED OR USED FOR ANY OTHER PROJECT IN PART OR IN WHOLE WITHOUT WRITTEN PERMISSION FROM SDS, LLC. © 2015 SPACES DESIGN STUDIO, LLC.

Project:
 6 Bears and a Goat Brewery
 Stafford, VA
Sheet:
 Reflected Ceiling Plan Key
 Reflected Ceiling Plans
Issue:

Date:
 2016.09.30
Sheet No.:
 E1.2



REFLECTED CEILING PLAN - BAR AND DINING AREA

1/4"=1'-0" 3

- SYMBOLS:**
- 3A WALL TYPE
 - 101 ROOM NUMBER
 - 1 EQUIPMENT NUMBER
 - 1 WINDOW NUMBER
 - 102 DOOR NUMBER
 - ⊞ LIGHT SWITCH
 - ⊕ ELECTRICAL OUTLET
 - 2 X 4 FLUORESCENT
 - 4" LED RECESSED CAN
 - EXISTING CONSTRUCTION
 - EF EXHAUST FAN
 - EXIT LIGHT W/ BATTERY BACKUP
 - WALL MOUNTED EXIT LIGHTING

- GENERAL NOTES:**
1. INTERIOR WALL PARTITIONS ARE 3-5/8" METAL STUD UNLESS OTHERWISE NOTED.
 2. CONTRACTOR TO VERIFY ALL EXISTING DIMENSIONS AND CONDITIONS.
 3. REFER TO A4.0 FOR PLAN DETAILS, WALL TYPES AND INTERIOR ELEVATIONS.
 4. REFER TO MEP DRAWINGS FOR ALL ELECTRICAL & MECHANICAL DETAILS.
 5. MEP TO DETERMINE FINAL QUANTITY & LOCATION OF EXIT / EGRESS LIGHTING
 6. REFER TO MEP DRAWINGS FOR LIGHTING & ELECTRICAL DETAILS.

ELECTRICAL BY
HAROLD FIEBICK
310 BOWENSBURG AVE
FREDERICKSBURG VA
540 373-7879
CLASS A 2701028856
MASTER 271015389
ROBERT H BOWENHARA JR
R.H.B. Bowyer

ADDENDA / REVISIONS

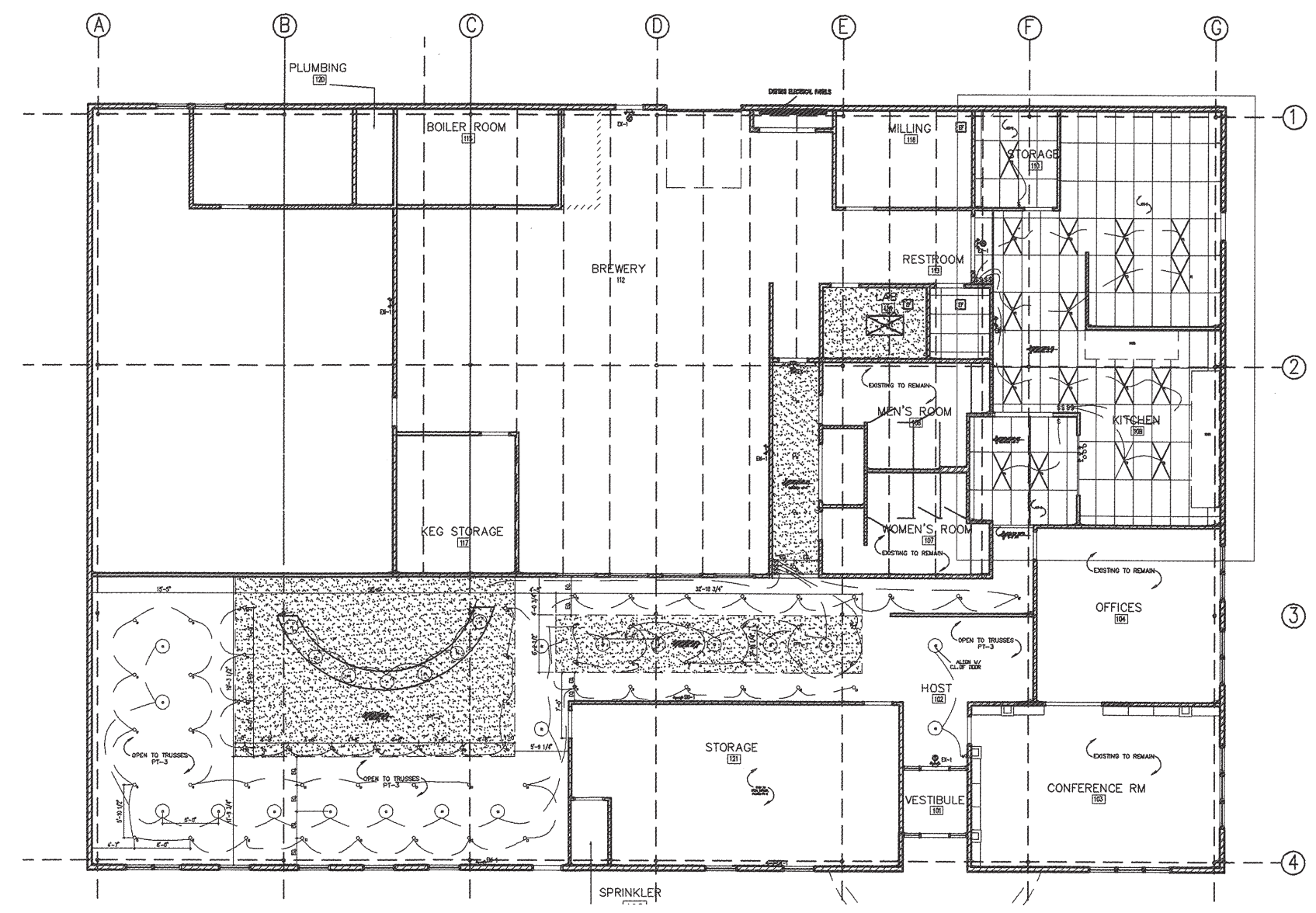
DATE	USE	INITIALS
2015.07.21	REVIEW	MITC
2016.03.07	REVIEW	KMP

THIS DRAWING IS THE PROPERTY OF SPACES DESIGN STUDIO, LLC. IT SHALL NOT BE REPRODUCED OR USED FOR ANY OTHER PROJECT WITHOUT WRITTEN PERMISSION FROM SDS, LLC.
©2015 SPACES DESIGN STUDIO, LLC.

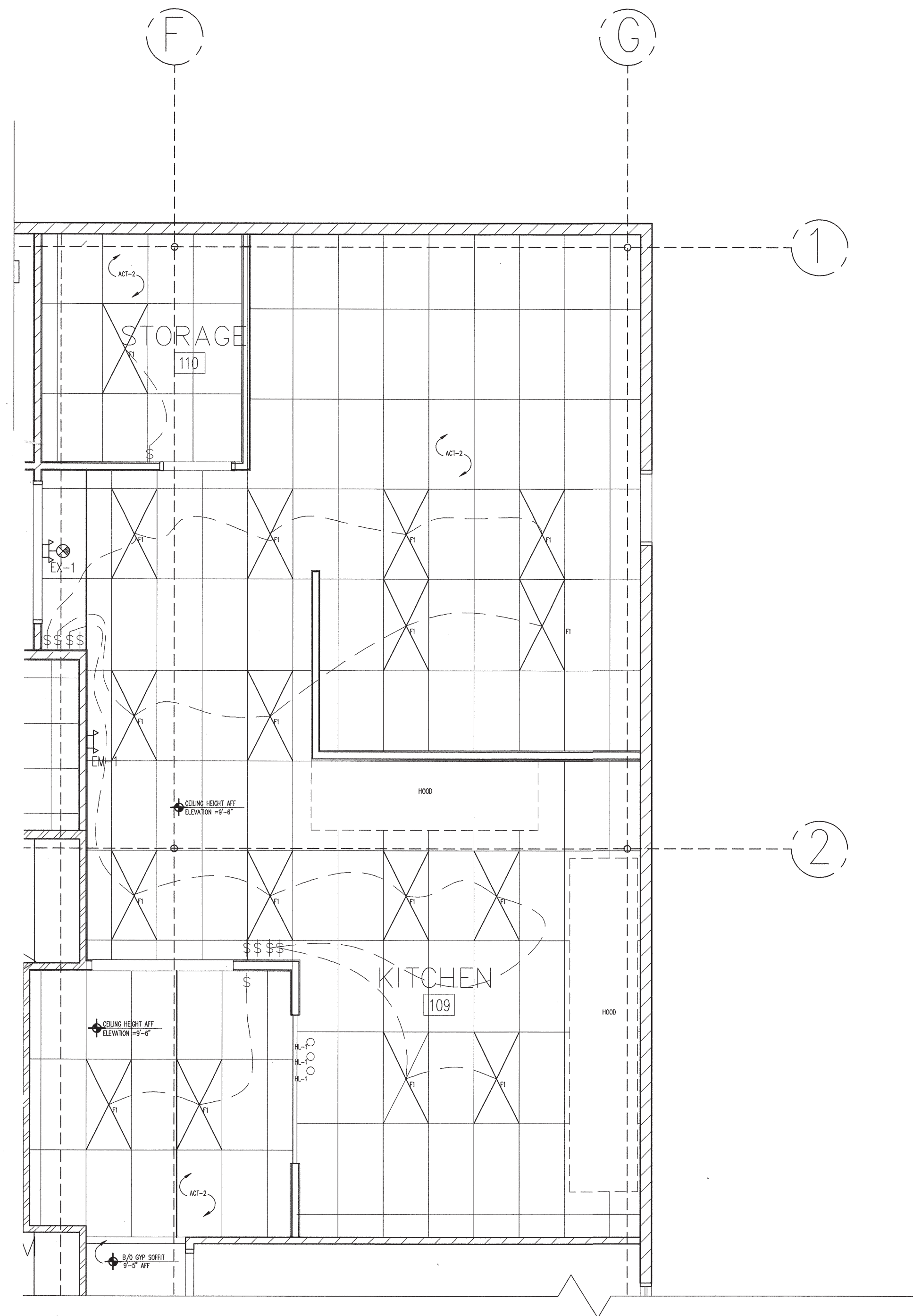
Project:
6 Bears and a Goat Brewery
Stafford, VA
Sheet:
Reflected Ceiling Plan Key
Reflected Ceiling Plans
Issue:

Date: 2016.09.07

Sheet No:
E1.3V



REFLECTED CEILING PLAN KEY 1/16"=1'-0" 1



REFLECTED CEILING PLAN 1/4"=1'-0" 2



Section 1: Project Information

Energy Code: 2009 IECC
Project Title: 6 Bears and a Goat Brewery Phase 2
Project Type: New Construction
Construction Site: 6 Bears and a Goat Brewery, Stafford, Virginia 22406
Owner/Agent: Designer/Contractor:

Section 2: Interior Lighting and Power Calculation

A Area Category	B Floor Area (ft ²)	C Allowed Watts / ft ²	D Allowed Watts (B x C)
Dining: Bar Lounge/Leisure	2839	1.3	3691
Total Allowed Watts =			3691

Section 3: Interior Lighting Fixture Schedule

A Fixture ID : Description / Lamp / Wattage Per Lamp / Ballast	B Lamps/ Fixture	C # of Fixtures	D Watt. (C X D)	E
Dining: Bar Lounge/Leisure (2839 sq.ft.)				
Incandescent L1: keyless: Incandescent 75W:	1	43	60	2580
LED: R1: recess: LED MR 10W:	1	25	10	250
LED: C1: pendant: LED Other Fixture Unit 60W:	1	18	9	182
LED: F1: troffer: LED Panel Unit 33W:	1	17	33	561
Total Proposed Watts =			3553	

Section 4: Requirements Checklist

- Interior Lighting PASSES: Design 3% better than code.
- Lighting Wattage:**
- 1. Total proposed watts must be less than or equal to total allowed watts.
- | Allowed Watts | Proposed Watts | Complies |
|---------------|----------------|----------|
| 3691 | 3553 | YES |
- Controls, Switching, and Wiring:**
- 2. Daylight zones under skylights more than 15 feet from the perimeter have lighting controls separate from daylight zones adjacent to vertical fenestration.
 - 3. Daylight zones have individual lighting controls independent from that of the general area lighting.
- Exceptions:
- Contiguous daylight zones spanning no more than two orientations are allowed to be controlled by a single controlling device.
 - Daylight spaces enclosed by walls or ceiling height partitions and containing two or fewer light fixtures are not required to have a separate switch for general area lighting.
- 4. Independent controls for each space (switch/occupancy sensor).
- Exceptions:
- Areas designated as security or emergency areas that must be continuously illuminated.

- Lighting in stairways or corridors that are elements of the means of egress.
 - 5. Master switch at entry to hotel/motel guest room.
 - 6. Individual dwelling units separately metered.
 - 7. Medical task lighting or art/history display lighting claimed to be exempt from compliance has a control device independent of the control of the nonexempt lighting.
 - 8. Each space required to have a manual control also allows for reducing the connected lighting load by at least 50 percent by either controlling all luminaires, dual switching of alternate rows of luminaires, alternate luminaires, or alternate lamps, switching the middle lamp luminaires independently of other lamps, or switching each luminaire or each lamp.
- Exceptions:
- Only one luminaire in space.
 - An occupant-sensing device controls the area.
 - The area is a corridor, storeroom, restroom, public lobby or sleeping unit.
 - Areas that use less than 0.6 Watts/sq.ft.
- 9. Automatic lighting shutoff control in buildings larger than 5,000 sq.ft.
- Exceptions:
- Sleeping units, patient care areas, and spaces where automatic shutoff would endanger safety or security.
- 10. Photocell/astronomical time switch on exterior lights.
- Exceptions:
- Lighting intended for 24 hour use.
- 11. Tandem wired one-lamp and three-lamp ballasted luminaires (No single-lamp ballasts).
- Exceptions:
- Electronic high-frequency ballasts; Luminaires on emergency circuits or with no available pair.

Section 5: Compliance Statement

Compliance Statement: The proposed lighting design represented in this document is consistent with the building plans, specifications and other calculations submitted with this permit application. The proposed lighting system has been designed to meet the 2009 IECC requirements in COMcheck-Web and to comply with the mandatory requirements in the Requirements Checklist.

Name - Title: *Robert H. Bowyer Jr.* Electrician
Signature: *Robert H. Bowyer Jr.*
Date: 9/30/16