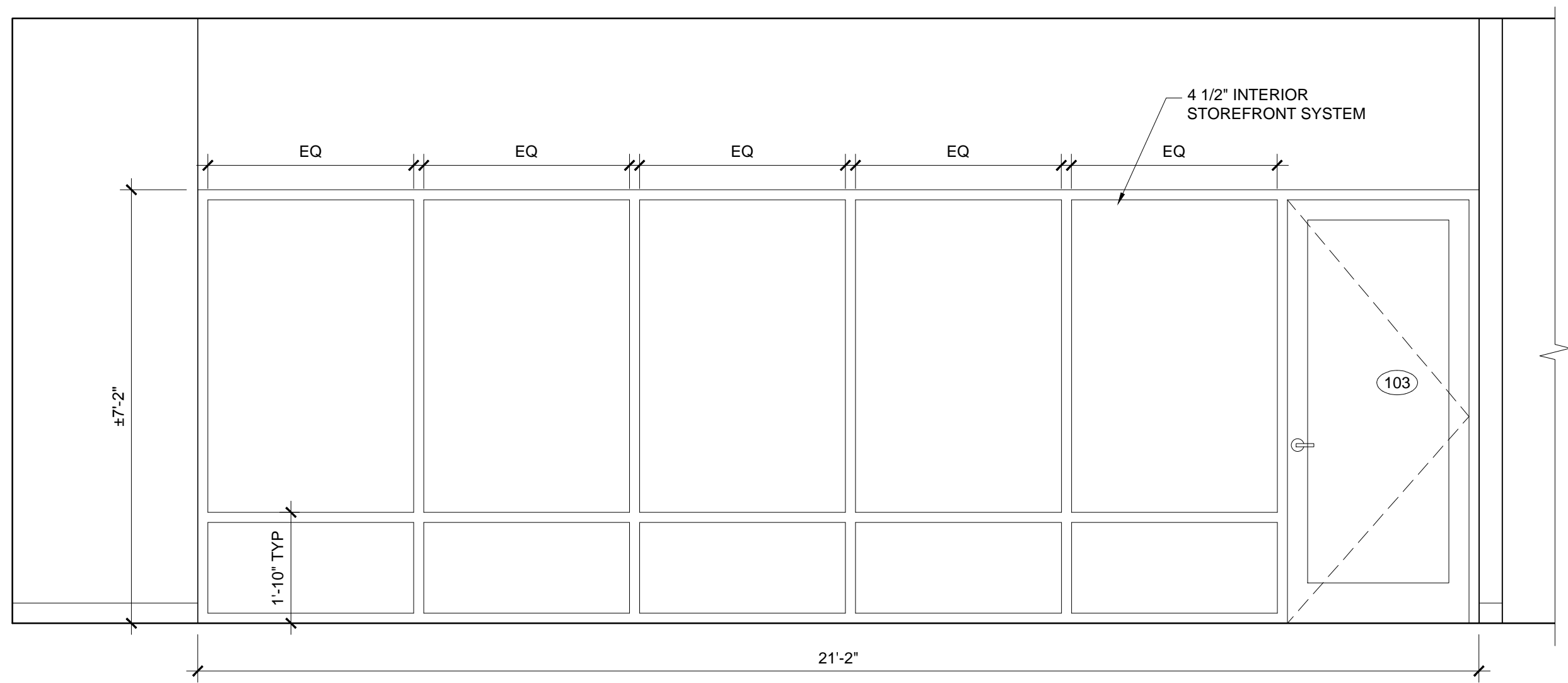
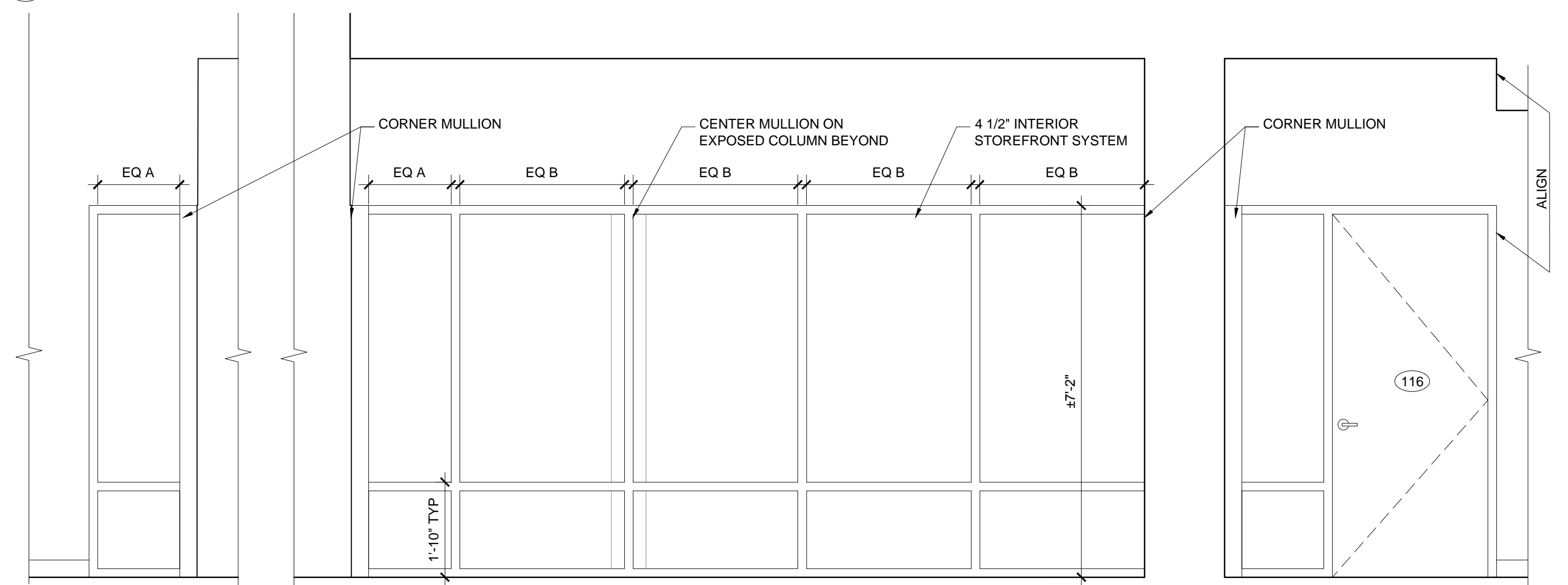


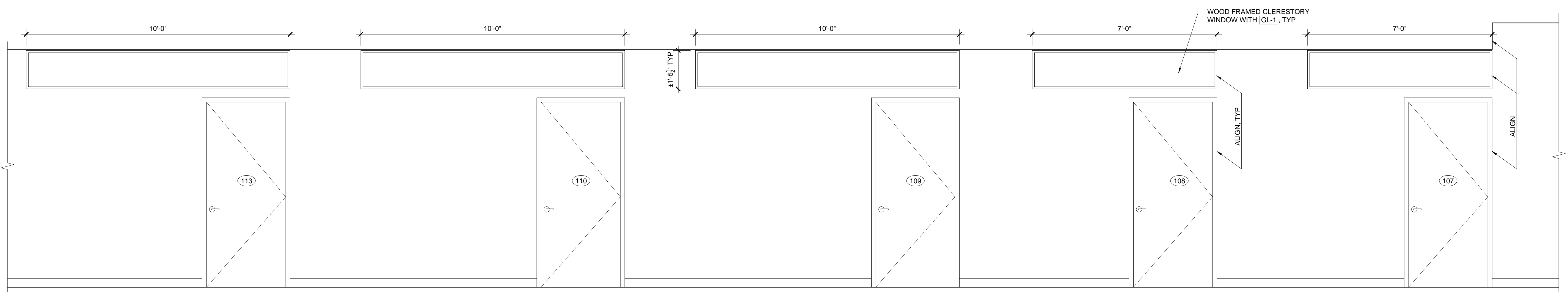
CLASSROOM #103 SHELVEING ELEVATION 4
1/2" = 1'-0"



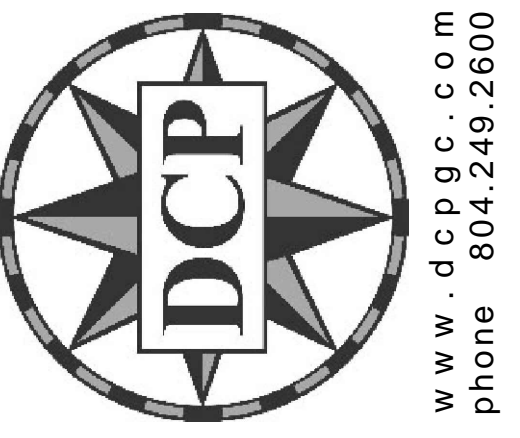
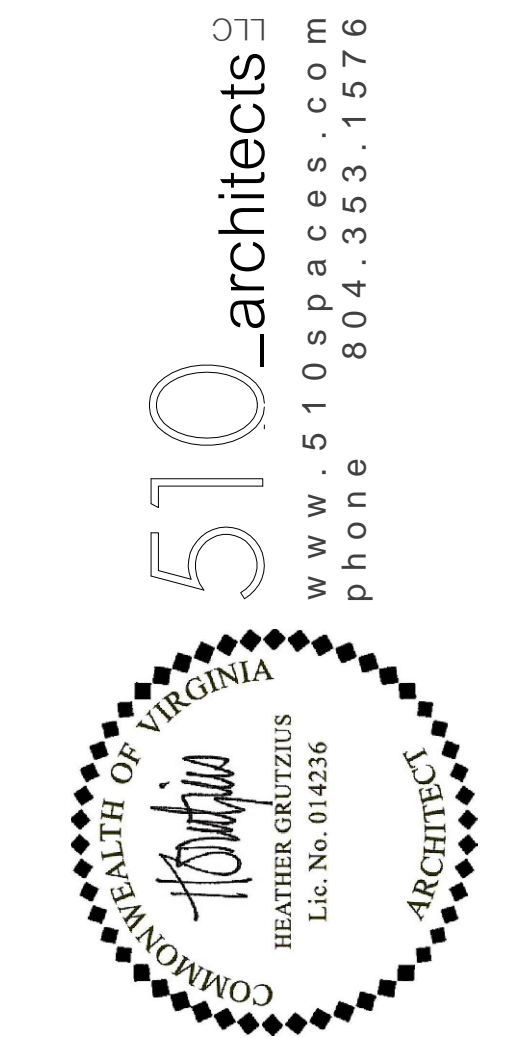
CLASSROOM #103 STOREFRONT ELEVATION 3
1/2" = 1'-0"



STUDIO #116 STOREFRONT INTERIOR ELEVATIONS 2
1/2" = 1'-0"



STUDIO TRANSOM ELEVATIONS 1
1/2" = 1'-0"



THE HIGHPOINT COLLECTIVE LLC
RENOVATION

DATE	ISSUE
04.18.16	PERMIT
06.30.16	PRICING ALTERNATES

INTERIOR ELEVATIONS
A4.2

www.dcpgcc.com
phone 804.249.2600
3300 W BROAD ST
RICHMOND, VIRGINIA 23230

This document is for use by 510_Architects LLC only. Reproduction of this document, in whole or in part, or the modification of any detail or design without the expressed, written consent of 510_Architects LLC is prohibited. All rights reserved. Copyright 2016 510_Architects LLC.

510_architects
www.510spaces.com
phone 804.353.1576