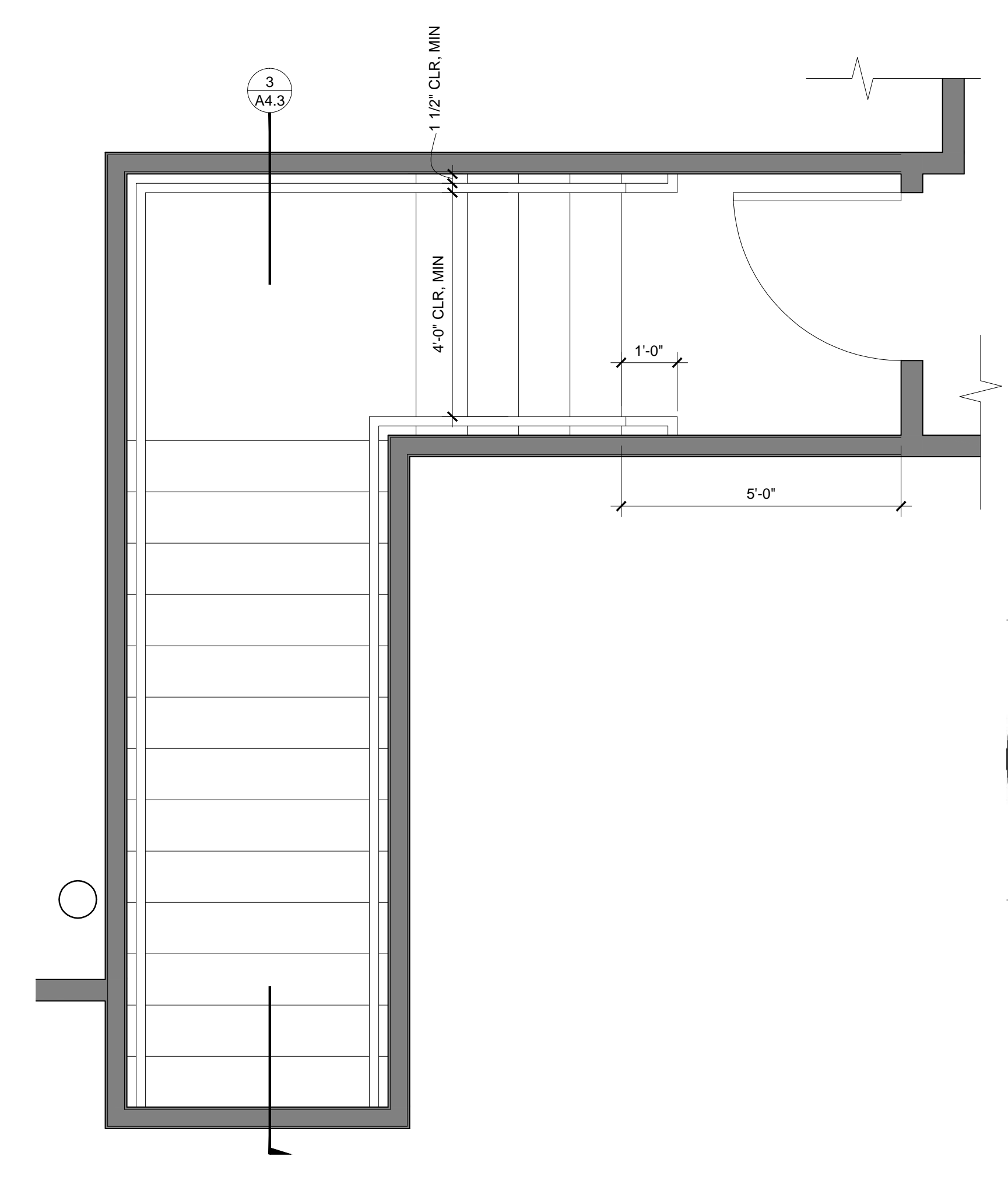
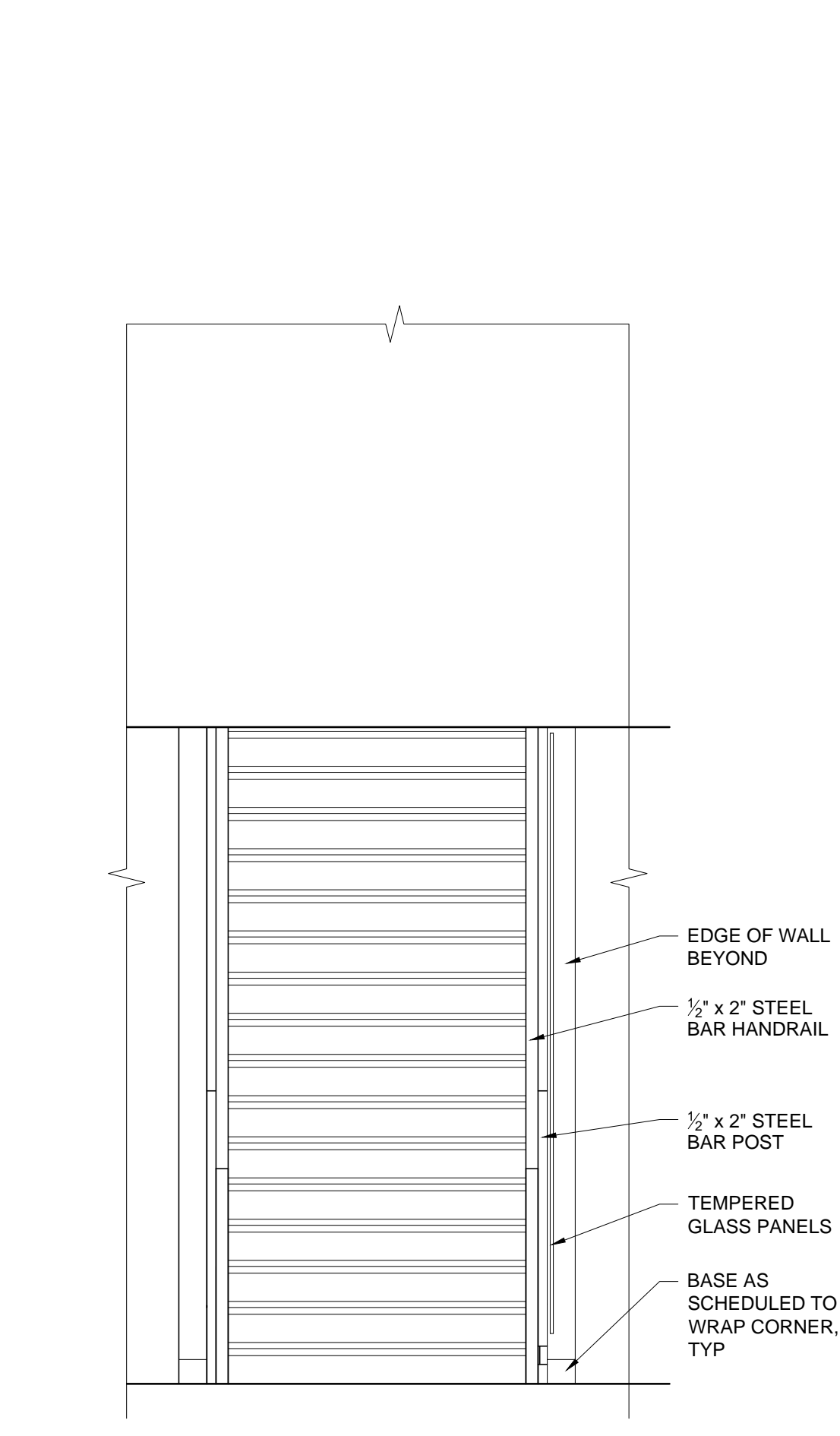


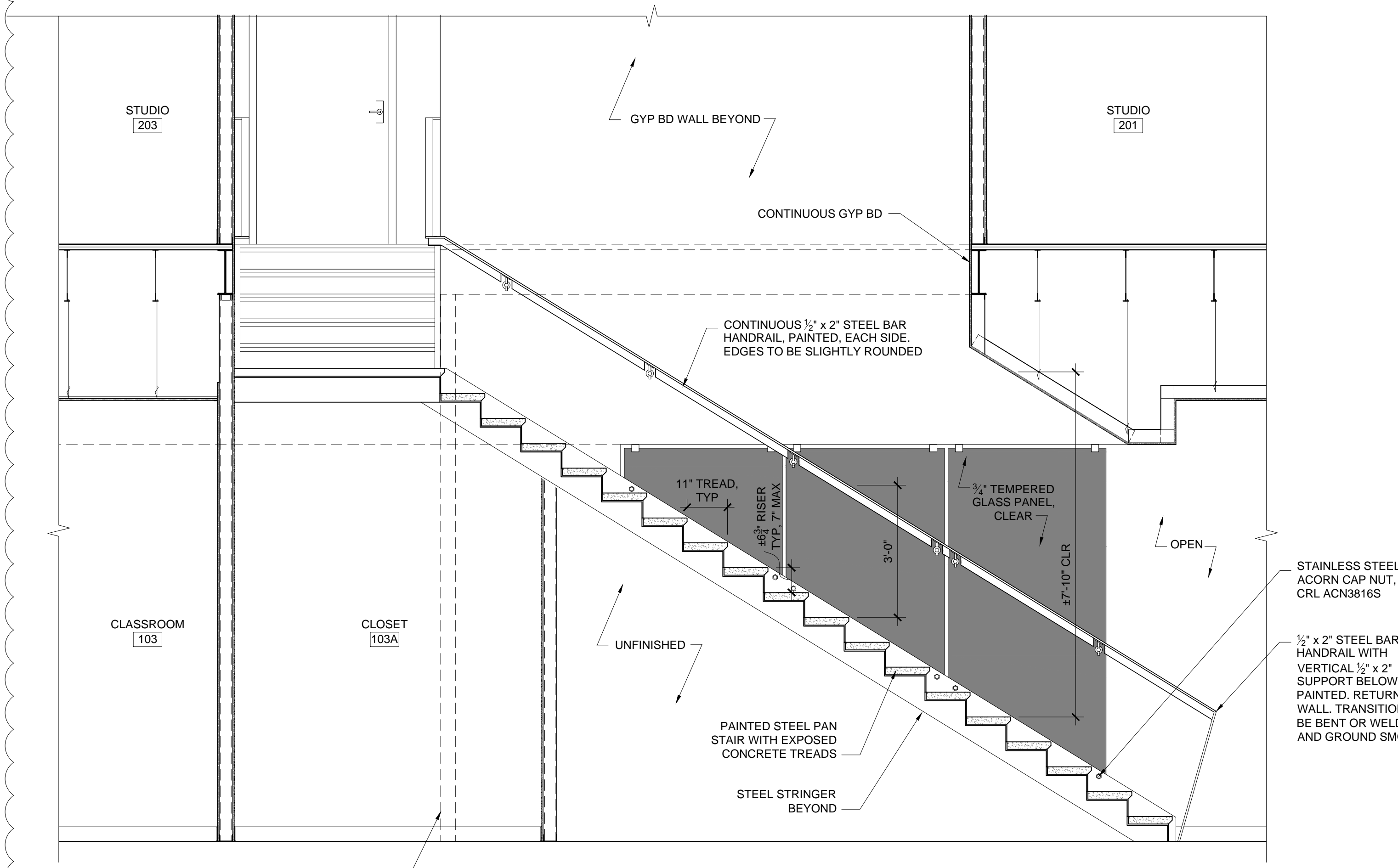
STAIR # 147 | SIDE ELEVATION 6
1/2" = 1'-0"



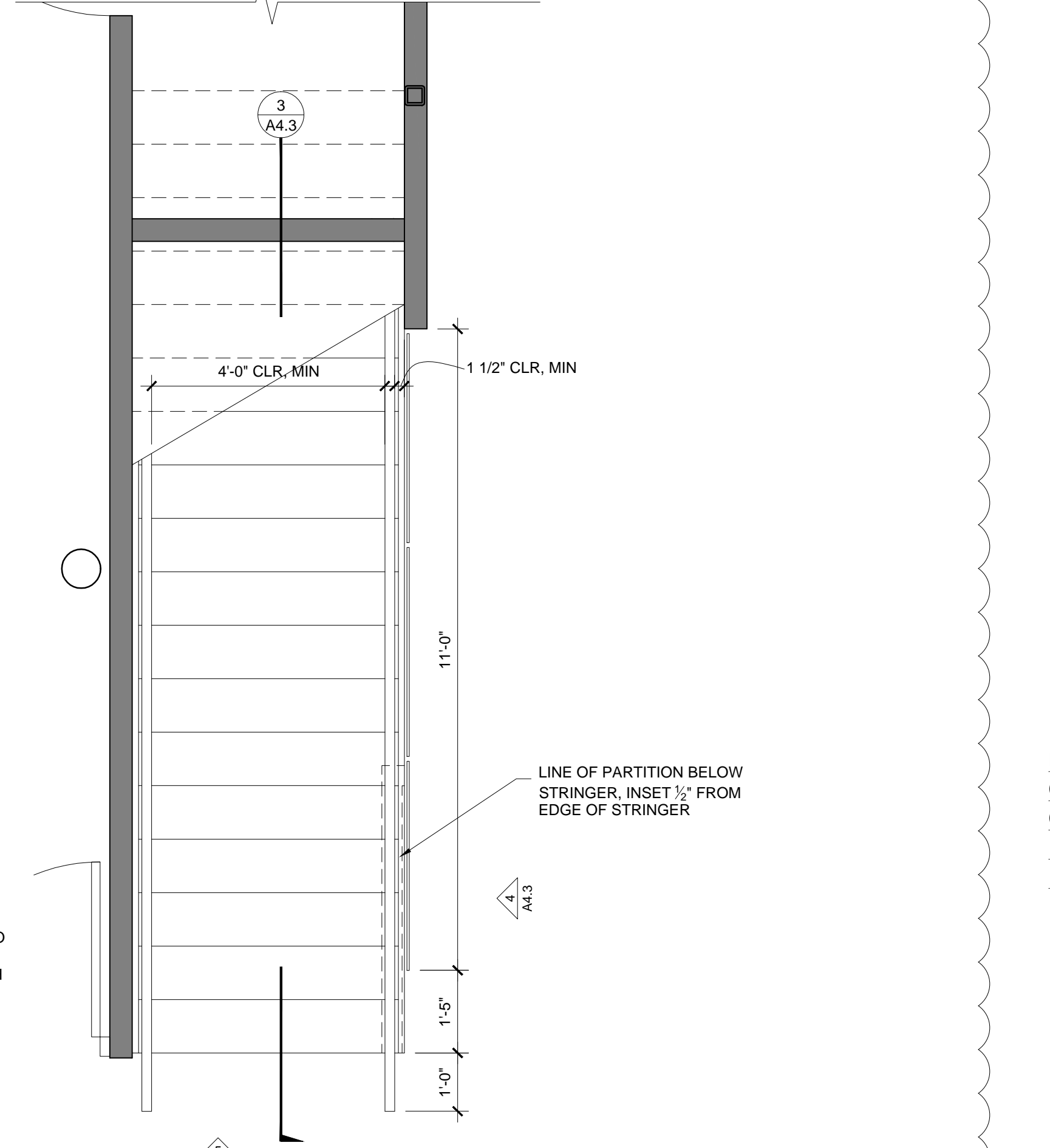
STAIR # 202 | ENLARGED PLAN 2
1/2" = 1'-0"



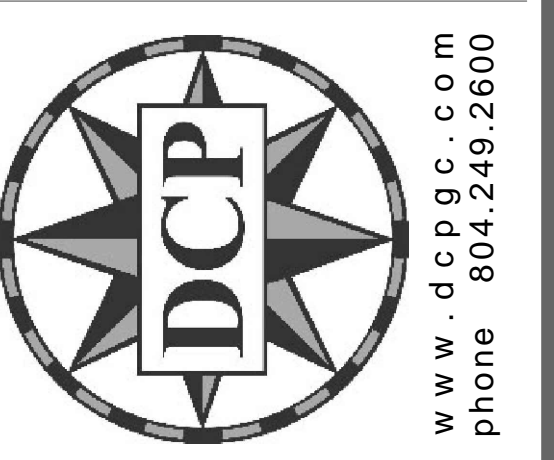
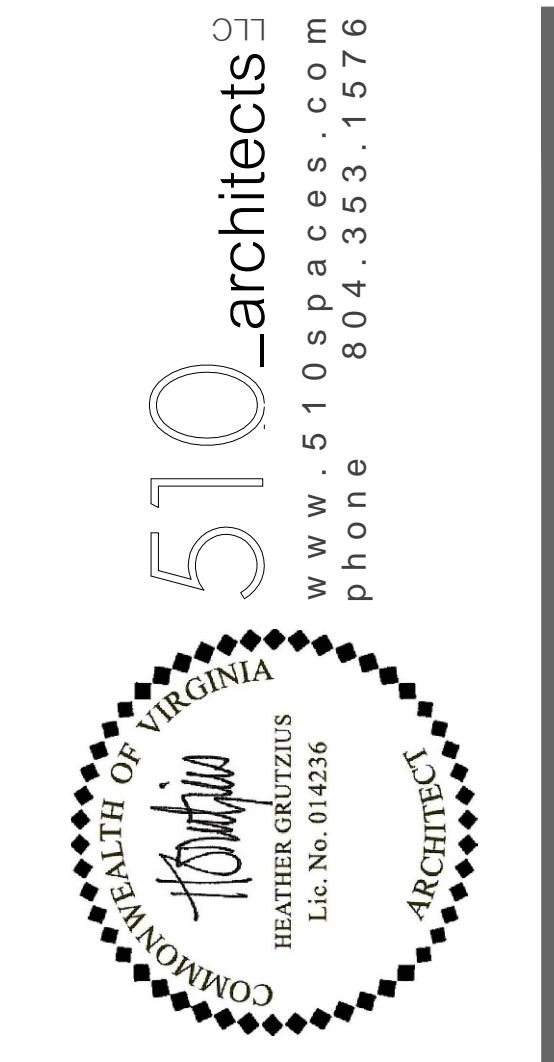
STAIR # 104 | END ELEVATION 5
1/2" = 1'-0"



STAIR # 104 & 202 | SECTION 3
1/2" = 1'-0"



STAIR # 104 | ENLARGED PLAN 1
1/2" = 1'-0"



3300 W BROAD ST
RICHMOND, VIRGINIA 23230

www.dcpgcc.com
phone 804.249.2600

510_architects
www.510spaces.com
phone 804.353.1576

THE HIGHPOINT COLLECTIVE LLC
RENOVATION

DATE	ISSUE
04.18.16	PERMIT
06.30.16	PRICING ALTERNATES

STAIR PLAN,
ELEVATIONS &
DETAILS

A4.3

This document is for use by 510_Architects LLC only. Reproduction of this document, in whole or in part, or the modification of any detail or design without the expressed, written consent of 510_Architects LLC is prohibited. Copyright 2016 510_Architects LLC.