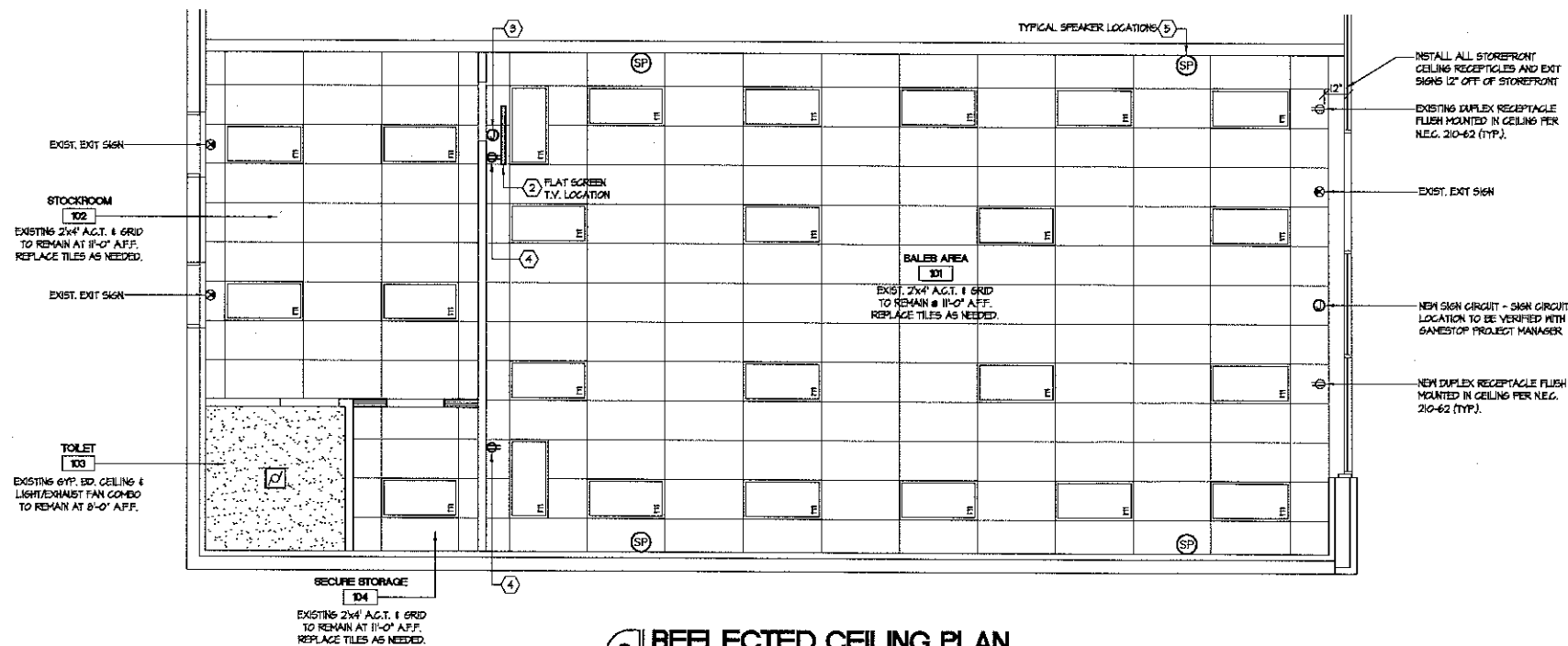


**1 FLOOR PLAN**  
SCALE 1/4\"/>



**2 REFLECTED CEILING PLAN**  
SCALE 1/4\"/>

**FLOOR PLAN GENERAL NOTES:**

- SEE SCHEDULE AND LEGEND SHEET FOR ROOM FINISHES, DOOR AND PARTITION TYPES.
- GENERAL CONTRACTOR SHALL PROVIDE ALL NECESSARY DUST AND TRAFFIC BARRIERS AND TEMPORARY PARTITIONS AS REQUIRED TO MAINTAIN A SAFE AND CLEAN ENVIRONMENT FOR THE PUBLIC AND EMPLOYEES THROUGHOUT THE PROJECT. GENERAL CONTRACTOR TO COORDINATE WITH THE HALL TENANT COORDINATOR REGARDING THESE PARTITIONS AT INTERIOR AND EXTERIOR LOCATIONS.
- GENERAL CONTRACTOR SHALL NOTIFY THE GAMESTOP PROJECT MANAGER IMMEDIATELY OF ANY INCONSISTENCIES OR DISCREPANCIES WITH THE PLANS IN RELATION TO THE EXISTING FIELD CONDITIONS. SEE FIELD VERIFICATION NOTES ON THIS SHEET.
- WRITTEN DIMENSIONS ALWAYS TAKE PRECEDENCE OVER SCALE ON THE CONSTRUCTION DOCUMENTS. DO NOT SCALE.
- ALL DIMENSIONS ARE FROM THE FACE OF FINISHED WALL TO FACE OF FINISHED WALL UNLESS NOTED OTHERWISE ON THE PLANS.
- ALL INTERIOR AND STOREFRONT CONSTRUCTION SHALL COMPLY WITH ALL APPLICABLE CODES AND ORDINANCES IN PLACE WITHIN THE JURISDICTION OF THE WORK.
- UNLESS NOTED OTHERWISE, THE GENERAL CONTRACTOR SHALL PROVIDE AND PAY FOR ALL LABOR, MATERIALS, EQUIPMENT, TOOLS, CONSTRUCTION EQUIPMENT, MACHINERY, PERMITS, TRANSPORTATION AND OTHER SERVICES AND FACILITIES NECESSARY FOR PROPER AND TIMELY EXECUTION OF THE REQUIRED WORK.
- FOR ALL MOOD MEMBERS REQUIRED BY CODE TO BE FIRE RETARDANT TREATED, PROVIDE PRESSURE IMPREGNATION WITH FIRE RETARDANT CHEMICALS TO PROVIDE ILL F.R.S. FIRE HAZARD CLASSIFICATION. ALL MOOD SHALL BE IDENTIFIED WITH A UL LABEL CERTIFYING THIS CLASSIFICATION AND FM DIAMOND.
- APPROVED FIRE EXTINGUISHERS SHALL BE PROVIDED, LOCATED AND INSTALLED BY THE GENERAL CONTRACTOR, AS REQUIRED BY THE GOVERNING AUTHORITY.
- ALL PENETRATIONS OF FIRE RESISTIVE FLOORS OR SHAFT WALLS SHALL BE PROTECTED BY MATERIALS AND INSTALLATION DETAILS THAT CONFORM TO UL STANDARDS FOR THROUGH PENETRATIONS FIRESTOP SYSTEMS. THE GENERAL CONTRACTOR SHALL SUBMIT SHOP DRAWINGS SHOWING COMPLETE CONFORMANCE TO THE UL LISTING TO THE ARCHITECT. SUCH DRAWINGS SHALL BE AVAILABLE TO ANY CITY INSPECTORS. THE DRAWINGS SHALL BE SPECIFIC FOR EACH PENETRATION WITH ALL VARIABLES DEFINED. PROVIDE SOLID MOOD BLOCKING WHEREVER COUNTER TOPS, GRAB BARS, TOILET PARTITIONS, AND TOILET FIXTURES ARE MOUNTED TO STUD AND GYP. BD. PARTITIONS. ALL WORK AND MATERIALS SHALL BE IN ACCORDANCE WITH THE LANDLORD'S NEG-LEGC. DESIGN CRITERIA. ALL CONTRACTORS SHALL OBTAIN A COPY FROM THE LANDLORD'S TENANT COORDINATOR OR HALL OPERATIONS MANAGER AND BECOME FAMILIAR WITH THE REQUIREMENTS CONTAINED WITHIN PRIOR TO BIDDING THE JOB. WHERE LANDLORD'S REQUIREMENTS CONFLICT WITH CODES OR ORDINANCES, CONTACT THE ARCHITECT IMMEDIATELY.
- ALL ELECTRICAL OUTLET AND SWITCH COVERS TO BE "WHITE" COLORED.
- NO EXPOSED CONDUIT ALLOWED UNLESS DIRECTED BY PROJECT MANAGER.

**KEYED NOTES**

- ELECTRICIAN TO PULL IN CONTINUOUS CONDUIT (B) PAIRS CAT 6 CABLES FROM THE PHONE BOARD INTO THE 'J' SECTION OF THE GASHWRAP WITH 6'-0" OF SLACK ON EACH CABLE AT THE 'J' SECTION LABELED "PHONE LINES AT EACH END, AND (I) PAIR CAT 6 CABLES FROM THE PHONE BOARD IN CONTINUOUS CONDUIT TO THE MANAGERS DESK WITH 6'-0" OF SLACK AT THE MANAGERS DESK LABELED "MANAGERS DESK" EACH END, AND (II) PAIR CAT 6 CABLES FROM THE PHONE BOARD TO OVER THE CEILING AT THE WORK TABLE LABELED "J" AT EACH END. THERE SHOULD BE ENOUGH SLACK AT THE PHONE BOARD FOR HOOK UP TO THE PUNCH BLOCK.
- NEW FLAT SCREEN TV. AT 9'-0" AFF. SUPPLIED & INSTALLED BY CBS. (TV. TO BE LOCATED ON SIDE OF GASHWRAP CLOSEST TO THE STOCK ROOM DOOR)
- TENANT G.C. TO RUN (I) ONE CAT 6 CABLE FOR 'J' BOX (WITH BLANK COVER) FROM THE CBS TV. LOCATION ABOVE THE CEILING TO THE PHONE BOARD WITH 6'-0" OF SLACK AT EACH END AND LABELED "CBS" EACH END. 'J' BOX LOCATED ABOVE CEILING.
- TENANT G.C. TO INSTALL (I) ONE WALL MOUNTED DUPLEX RECEPTACLE ON EITHER SIDE OF GASHWRAP AT 9'-0" AFF. FOR FLATSCREEN TV. (FLUSH MOUNTED IN WALL)
- TYPICAL SPEAKER LOCATIONS - SUPPLIED & INSTALLED BY CBS. TENANT G.C. TO INSTALL FOUR (4) RUNS OF 16 GA. FLENUM SPEAKER CABLE FROM ABOVE THE CEILING AT THE TV. LOCATION TO THE SALES AREA SPEAKER LOCATIONS WITH 8 FOOT SLACK AT EACH END. SECURE CABLES TO THE STRUCTURE ABOVE, DO NOT LAY CABLE ON THE CEILING GRID.

**FIXTURE LEGEND**

NAME	DESCRIPTION	VENDOR	INSTALLED BY
B	RECEIVING TABLE - 24"D x 48"L	GAMESTOP	G.C.
J	REGISTER UNIT	GAMESTOP	G.C.
K	WORK UNIT	GAMESTOP	G.C.
L	WORK UNIT	GAMESTOP	G.C.
L30	HANDICAP ACCESSIBLE FIXTURE (ADA TOP @ 34" AFF.)	GAMESTOP	G.C.
N	CORNER UNIT	GAMESTOP	G.C.
R	VCR & DOT MATRIX LOCATION	GAMESTOP	G.C.
GEA	GAMEBOY ACCESSORY FIXTURE	GAMESTOP	G.C.
FT	FEATURE TOWER FIXTURE	GAMESTOP	G.C.
GC	GIFT CARD FIXTURE	GAMESTOP	G.C.
S6	STRATEGY GUIDE FIXTURE	GAMESTOP	G.C.
WF	FREE STANDING WIRE FRAME	GAMESTOP	G.C.
GB	GAME BROWSER	GAMESTOP	G.C.
V-36	BACKWALL CABINET (66"W x 69"H x 12"D)	GAMESTOP	G.C.
V-23	BACKWALL CABINET (83"W x 38"H x 22"D)	GAMESTOP	G.C.

**REFLECTED CEILING PLAN GENERAL NOTES**

- CEILING HEIGHTS ARE AS NOTED ON PLAN. GENERAL CONTRACTOR SHALL NOTIFY THE TENANT IMMEDIATELY OF ANY DISCREPANCIES WITH THE PLANS IN RELATION TO THE EXISTING FIELD CONDITIONS.
- G.C. TO CONFIRM THAT METAL SUSPENSION SYSTEM FOR ACoustICAL TILE AND LAY-IN PANEL CEILING SHALL CONFORM TO THE REQUIREMENTS OF ASTM C836-06 AND ASTM C836-07 FOR INTERMEDIATE DUTY SYSTEMS.
- G.C. TO CONFIRM THAT ALL EMERGENCY, EXIT AND NIGHT LIGHTS TO HAVE BATTERY BACKUP POWER PER ALL CODES.
- G.C. TO CONFIRM THAT VERTICAL HANGERS BE MAX 8" FROM WALL.
- G.C. TO CONFIRM THAT ALL EQUIPMENT SHALL BEAR UL LABELS.
- G.C. TO CONFIRM THAT DIFFUSERS TO HAVE HANG WIRES ON ALL FOUR CORNERS.
- G.C. TO CONFIRM THAT LIGHTS TO HAVE HANG WIRES ON ALL FOUR CORNERS.
- G.C. TO CONFIRM THAT FLENUM DOES NOT CONTAIN ANY COMBUSTIBLES.
- G.C. TO INSTALL ACCESS DOORS AS NECESSARY.
- G.C. TO VERIFY LOCATIONS OF ALL HVAC AND EMERGENCY LIGHTS THAT ARE GOING TO BE PROVIDED BY THE LANDLORD.

**MECHANICAL NOTE**

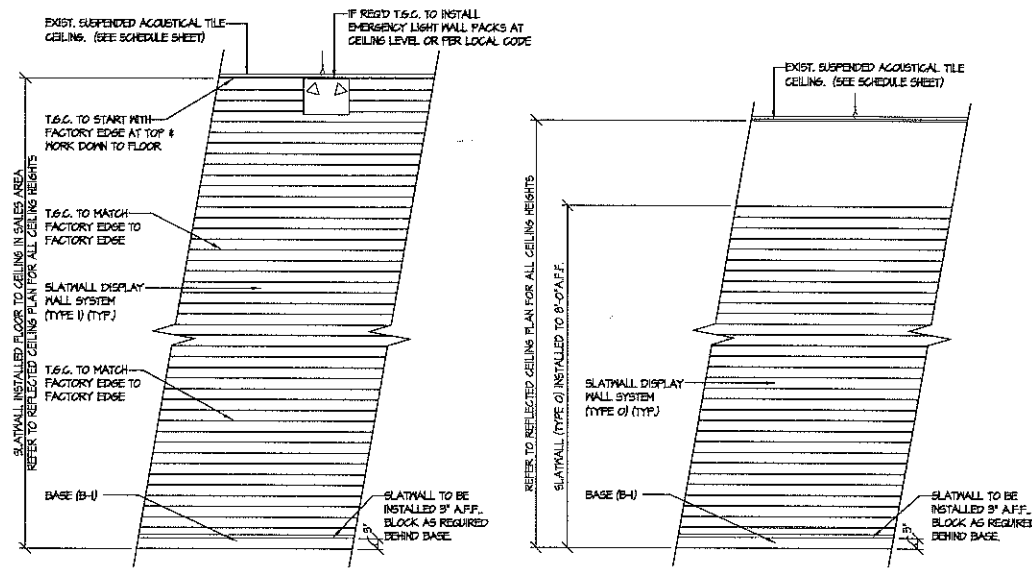
- EXIST. RTU TO REMAIN.
- G.C. TO MAKE SURE RTU IS IN GOOD WORKING CONDITION AND ALL FILTERS ARE CLEAN.
- G.C. SHALL MAKE SURE ALL DIFFUSERS ARE CLEAN AND CONNECTED PROPERLY.
- G.C. SHALL COORDINATE ALL RTU WORK OF LANDLORD PRIOR TO COMMENCEMENT OF WORK.

CEILING PLAN LEGEND	E = EXISTING R = RELOCATED N = NEW	TOTAL FIXTURES
		25
		1
		2

REGISTRATION SEAL  
**FREDERICK J. GOGLIA**  
 ARCHITECT, NCARB, RID  
 1850 CRAIG ROAD, SUITE 300  
 ST. LOUIS, MO 63146  
 PH: (314) 415-2400 FAX: (314) 415-2800 www.fjgarc.com

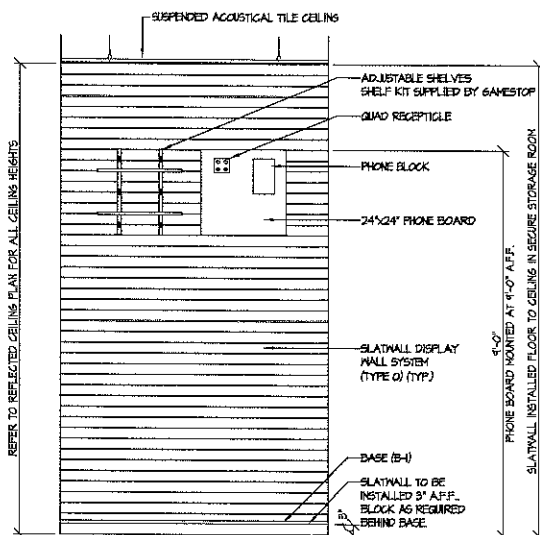
**Gamestop**  
 SHOPS AT STRATFORD HILLS  
 7017 FOREST HILL AVENUE  
 RICHMOND, VIRGINIA 23225  
 STORE #2444

PROJECT NO: 16022  
 DRAWN BY: JDM  
 CHECKED BY: JDM  
 ISSUE DATE: 05/04/16  
**FLOOR / REFLECTED CEILING PLAN**  
**A1**



**1 TYPICAL SALES AREA ELEV.**  
SCALE: 1/2" = 1'-0"

**2 TYPICAL STOCKROOM ELEV.**  
SCALE: 1/2" = 1'-0"



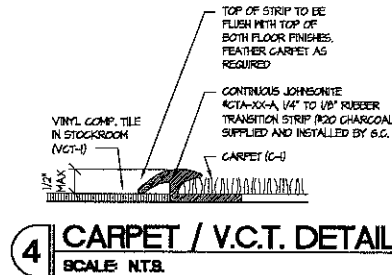
**3 TYP. SEC. STORAGE RM. ELEV.**  
SCALE: N.T.S.

**SLATWALL NOTE**

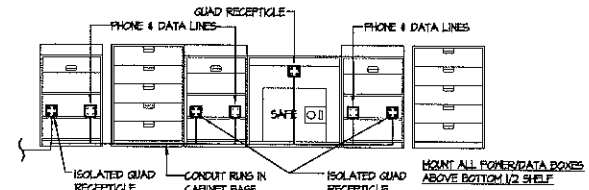
OWNER SUPPLIED SLATWALL SYSTEM SHALL BE SECURELY ANCHORED TO STUDS AT A MINIMUM OF 24" O.C. VERTICALLY AND 32" O.C. HORIZONTALLY WITH 1-1/2" LONG TEK SCREWS OR AS RECOMMENDED BY MANUFACTURER - WHICHEVER IS MORE STRINGENT. PANELS SHALL ALSO BE INSTALLED USING LIQUID NAILS HEAVY DUTY ADHESIVE - RIBBONS SHOULD BE IN A 16"x16" GRID PATTERN.

**GENERAL ELECTRICAL NOTES**

- ALL EXISTING HVAC EQUIPMENT SHALL REUSE EXISTING ELECTRICAL CONNECTIONS. MAINTAIN EXISTING CIRCUITS.
- ALL EXISTING LIGHTING FIXTURES SHALL BE CLEANED AND RELAXED TO LIKE-NEW CONDITION. PROVIDE NEW LENS WHERE REQUIRED. E.G. SHALL VERIFY PROPER OPERATION AND REPAIR/REPLACE ANY DEFECTIVE OR DAMAGED UNITS. MAINTAIN EXISTING CIRCUITS.
- E.G. SHALL VERIFY ALL EXISTING SWITCHES AND RECEPTACLES ARE IN SAFE AND PROPER WORKING CONDITION. REPAIR/REPLACE ANY DEFECTIVE OR DAMAGED DEVICES. MAINTAIN EXISTING CIRCUITS.
- THE CIRCUITS USED TO POWER THESE RECEPTACLES SHALL NOT BE USED FOR ANY OTHER PURPOSE. CIRCUITS SHALL NOT SHARE NEUTRAL OR GROUND WITH OTHER EQUIPMENT. SEPARATE POWER, NEUTRAL, AND INSULATED GROUND WIRES, MINIMUM SIZE #12 AWG SHALL BE RUN TO THE CIRCUIT BREAKER PANEL BOARD WHERE GROUND WIRE SHALL BE TIED TO THE GROUND TERMINAL. ISOLATED FROM NEUTRAL. DO NOT USE CONDUIT FOR GROUNDING AS THIS MAY NOT BE CONTINUOUS. RECEPTACLES SHALL BE HUBBELL #6-5962.
- PROVIDE CONDUIT AND WIRE FOR POWER TO P.O.S. AND GENERAL RECEPTACLES AND TELEPHONE OUTLETS TO BE LOCATED AT CABINET BOTTOM. ROUTE CONDUITS AS SHOWN ON PLAN UNDER CONCRETE FLOOR AND LEAVE A (2) TWELVE FOOT FLEX INHP FOR EACH POWER CIRCUIT CONDUIT REQUIRED. STUD CONDUIT INTO CABINET BASE AND RUN THROUGH CABINET BASE TO EACH RECEPTACLE. COORDINATE EXACT CONFIGURATION WITH TENANT REP. AND LOCATION WITH FIXTURE INSTALLER.
- ELECTRICIAN TO PULL IN CONTINUOUS CONDUIT (6) PAIRS CAT 6 CABLES FROM THE PHONE BOARD INTO THE "J" SECTION OF THE CASHWRAP WITH 6'-0" OF SLACK ON EACH CABLE AT THE "J" SECTION LABELED "PHONE LINES AT EACH END, AND (1) PAIR CAT 6 CABLES FROM THE PHONE BOARD IN CONTINUOUS CONDUIT TO THE MANAGERS DESK WITH 6'-0" OF SLACK AT THE MANAGERS DESK LABELED "MANAGERS DESK AT EACH END, AND (1) PAIR CAT 6 CABLES FROM THE PHONE BOARD TO COVER THE CEILING AT THE WORK TABLE LABELED "J" AT EACH END. THERE SHOULD BE ENOUGH SLACK AT THE PHONE BOARD FOR HOOK UP TO THE PUNCH BLOCK.
- QUAD RECEPTACLE FLUSH MOUNTED IN WALL AT 48" AFF. & A DUPLEX RECEPTACLE FLUSH MOUNTED IN WALL AT 108" AFF. ON BOTH SIDES OF CASHWRAP IN CONTINUOUS CONDUIT RUN. REFER TO DETAIL 8/2.
- NEW FLAT SCREEN TV. AT 4'-0" AFF. SUPPLIED & INSTALLED BY G.S. (TV. TO BE INSTALLED ON THE SIDE OF CASHWRAP CLOSEST TO THE STOCK ROOM DOOR).
- (TENANT G.S. TO RUN (1) CAT 6 CABLE FOR J-BOX (WITH BLANK COVER) (J-BOX LOCATED ABOVE CEILING) FROM THE CBS TV. LOCATION ABOVE THE CEILING TO THE PHONE BOARD WITH 6'-0" OF SLACK AT EACH END AND LABELED "CBS" EACH END. T.S.G. TO ALSO INSTALL FOUR (4) RUNS OF 16 GA. PLenum SPEAKER CABLE FROM ABOVE THE CEILING AT THE TV. LOCATION TO THE SALES AREA SPEAKER LOCATIONS WITH 6 FOOT SLACK AT EACH END. SECURE CABLES TO THE STRUCTURE ABOVE. DO NOT LAY CABLE ON THE CEILING GRID.
- ALL EXIST. NEW LIGHT SWITCHES TO BE INSTALLED IN STOCK RM. NEXT TO STOCK/SALES DOOR.
- NO EXPOSED CONDUIT ALLOWED UNLESS DIRECTED BY GAMESTOP PROJECT MANAGER.



**4 CARPET / V.C.T. DETAIL**  
SCALE: N.T.S.



**5 CASHWRAP ELEVATION**  
SCALE: 3/8" = 1'-0"

**DOOR SCHEDULE** REFER TO THE RESPONSIBILITY OF WORK ON SHEET #1 (PATCH & REPAIR DOORS AS REQUIRED)

NO.	ROOM	DOOR SIZE	DOOR MATERIAL	DOOR FINISH	FRAME MATERIAL	FRAME FINISH	HOW GROUP	NOTES
1	ENTRY	3'-0" x 7'-0"	EXIST.	EXIST.	EXIST.	EXIST.	5	D, F, L
2	STOCK	3'-0" x 6'-8"	H.M.	P-2	H.M.	P-2	1	F, S, M
3	SECURE STORAGE	3'-0" x 6'-8"	H.M.	P-2	H.M.	P-2	1	F, S, M
4	TOILET	3'-0" x 6'-8"	EXIST.	P-2	EXIST.	P-2	3	D, F, S
5	EXIT	3'-0" x 7'-0"	EXIST.	EXIST.	EXIST.	EXIST.	2	D, F, S, I
6	EXIT	3'-0" x 7'-0"	EXIST.	EXIST.	EXIST.	EXIST.	2	D, F, S, I
7	SHUTTER GRILLE	WIDTH VARIES (VERIFY IN FIELD)	ALUMINUM	--	--	--	4	D, F

**DOOR NOTES**

A. REFER TO RESPONSIBILITY ON SHEET #1  
 B. G.S. SHALL BE RESPONSIBLE FOR COORDINATING GRILLE INSTALLATION WITH ALL OTHER TRADES AND SHALL VERIFY THAT THE GRILLE IS OPERATING PROPERLY.  
 C. UNDERCUT DOOR 1" FOR VENTILATION  
 D. G.S. TO CLEAN, REPAIR AS REQ'D  
 E. PAINT PER L.L. SPECS.  
 F. INSTALL NEW HARDWARE  
 G. PAINT DOORS AS SPECIFIED BY GAMESTOP REPRESENTATIVE.  
 H. DOOR SHALL BE 1 HR. RATED.  
 I. REFER TO DETAIL 9/2  
 J. NEW STEEL DOOR W/ NON-REMOVABLE PIN HINGES SUPPLIED & INSTALLED BY T.S.G.  
 K. FRAMELESS ENTRY DOOR HARDWARE PROVIDED BY AMERICAN PRODUCTS, INC.  
 L. TENANT G.S. TO SUPPLY & INSTALL A PARALLEL ARM CLOSER AT ENTRY DOOR  
 M. HOLLOW METAL DOOR AND FRAME SUPPLIED BY GAMESTOP AND INSTALLED BY TENANT G.S.

**DOOR HARDWARE** NOTE: \* = SUPPLIED BY GAMESTOP & INSTALLED BY T.S.G. NOTE: ALL CYLINDERS FOR LOCKS WILL BE SUPPLIED BY GAMESTOP.

GROUP	DESCRIPTION	QTY.	MODEL	FIN.	MANUFACTURER	GROUP	DESCRIPTION	QTY.	MODEL	FIN.	MANUFACTURER
#1	LOCKSET	1	STOCK ROOM / SEC. STORAGE	SATIN CHROME PLATED	BEST	#3	LOCKSET	1	TOILET ROOM	SATIN CHROME PLATED	LOWES / HOME DEPOT
	HINGES	1/2 PR.	1-1/2" PIN CYLINDER MEK124C61K626	CHROME ALLOY	STANLEY		HINGES	1/2 PR.	LEVER HANDLE 1" FUNCTION STANDARD PASSAGE SET	CHROME ALLOY	STANLEY
	CLOSER	1	RESCOE (6" PULL SIDE)	#5260	CLOSER PLUS		CLOSER	1	RESCOE (6" PULL SIDE)	#5260	CLOSER PLUS
	STOP	1	FLOOR STOP #480	#5260	IVES		STOP	1	FLOOR STOP #480	#5260	IVES
	KICKPLATES	2	10" x 34" WITH BEVELED EDGES - 3 SIDES. (ON BOTH SIDES OF DOOR)	BRUSHED STAINLESS STEEL	ROCKWOOD		KICKPLATES	2	10" x 34" WITH BEVELED EDGES - 3 SIDES. (ON BOTH SIDES OF DOOR)	BRUSHED STAINLESS STEEL	ROCKWOOD
#2	EXIT DEVICES	1	66 TO INSTALL J-BOX ON DEDICATED CIRCUIT AND MOUNT POWER SUPPLY FOR TRIDENT. THE POWER SUPPLY IS PROVIDED IN THE TRIDENT BOX. SEE DETAIL 8/2.	TRIDENT	TRIDENT	#4	SECURITY SHUTTER GRILLES				
	HINGES	1/2 PR.	FE87M	CHROME ALLOY	STANLEY		AS MANUFACTURED BY METRO DOOR OR APPROVED EQUAL. GRILLE SHALL HAVE A 2 POINT LOCK WITH CYLINDER OPERABLE FROM THE OUTSIDE. A TRANSDRUM ON THE INSIDE. THE LOCK WILL BE LOCATED INSIDE ON THE BOTTOM BAR OF THE SHUTTER.				
	CLOSER	1	RESCOE (6" PULL SIDE)	#5260	CLOSER PLUS		EXISTING STOREFRONT ENTRY DOORS				
#3	STOP	1	TRIDENT STOP #480	#5260	IVES	#5	CLOSER	1	NORTON DOOR CLOSER - SURFACE MOUNTED W/ PARALLEL ARM MOUNT	---	NORTON
	STEEL PLATE	1	TRIDENT STEEL PLATE - MOUNT PER MANUFACTURER SPECIFICATIONS	---	TRIDENT		NOTE: TENANT G.S. TO SUPPLY AND INSTALL PARALLEL ARM CLOSER AT ENTRY DOOR.				
	SILENCER	3	#20 DOOR SILENCER (3 PER DOOR)	---	IVES						

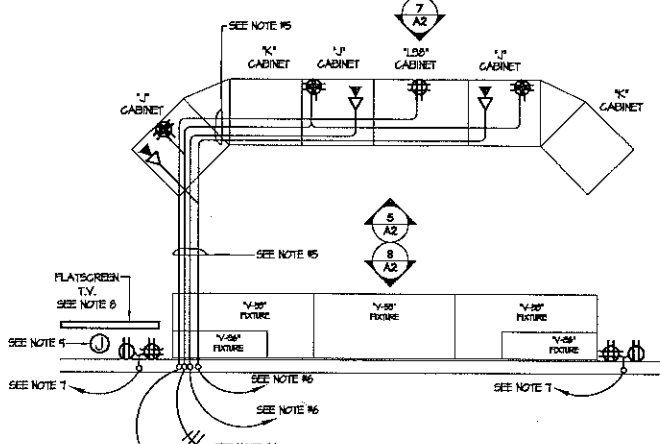
**FINISH LEGEND**

KEY	MATERIAL	MANUFACTURER	SPECIFICATIONS	REMARKS
CA	CARPET TILE	INTERFLO	MEETS OR EXCEEDS THE REQUIREMENTS FOR NFPA CLASS 1	NEW HARP (PUSH-IN CARPET); RETINAL CARPET IN CHECKERBOARD PATTERN AND NON-RETINAL CARPET TILES
VCT-1	VINYL COMP. TILE	ARMSTRONG	EXCELON 15410 CLASSIC BLACK 12X12" x 1/8" THICK	
B-1	RUBBER BASE	ROFFE - STRAIGHT BASE	4" HIGH BLACK	G.S. TO FURNISH BASE
P-1	PAINT	BENJAMIN MOORE	PRIMARY PAINT: #201-00 PRIMER FINISH PAINT. READY MIX COLOR - DECORATOR'S WHITE, SATIN FLAT	G.S. TO FURNISH / INSTALL
P-2	PAINT	BENJAMIN MOORE	#221-20 STEEL WOOL, SATIN FINISH - WALLS (LATEX SATIN) METAL (OIL BASE SATIN)	TO MATCH WILSONART #090-60 NORTH SEA G.S. TO FURNISH / INSTALL
TYPE O	SLATWALL	---	4# SHEETS, T-SLOTS # 3" O.C. UNFINISHED MDF	TENANT TO SUPPLY SLATWALL
TYPE I	SLATWALL	---	4# SHEETS, T-SLOTS # 3" O.C. W/ GRAY FINISH (NORTH SEA)	TENANT TO SUPPLY SLATWALL
ACT-1	CEILING TILE	ARMSTRONG	24" x 48" x 5/8", FIGURED 1045, WHITE 24" x 48"	THROUGHOUT SPACE
ACT-2	CEILING GRID	ARMSTRONG	15/16" PRELUXE EXPOSED TEE GRID, WHITE	
FRP	FRP PANELS	MARLITE	48" TALL "WHITE" FRP PANELS	INSTALLED ON ALL TOILET ROOM WALLS BY TENANT G.S. TO 48" AFF.

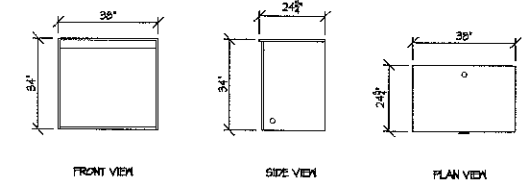
**ROOM FINISH SCHEDULE**

NO.	ROOM	FLOOR	BASE	WALL	CEILING	FINISH	REMARKS
101	SALES AREA	(C-1)	(B-1)	TYPE I	(ACT-1)	---	
102	STOCKROOM	(VCT-1)	(B-1)	TYPE O	(ACT-2)	---	
103	TOILET	(VCT-1)	(B-1)	P-1 & FRP	EXISTING 6" TP. BD.	P-1	PAINT ENTIRE TOILET ROOM (P-1) ABOVE 48" AFF.
104	SECURE STORAGE	(VCT-1)	(B-1)	TYPE O	(ACT-1)	---	

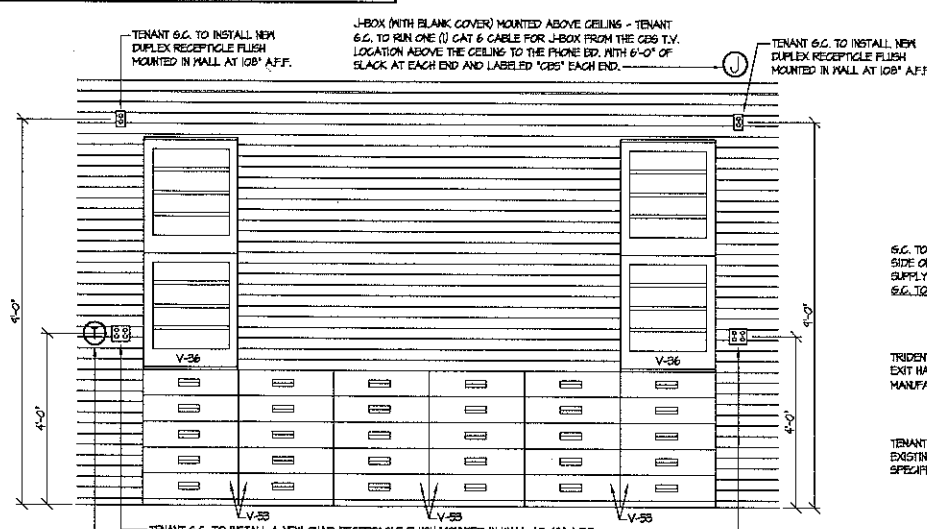
ALL FINISHES MUST CONFORM TO FLAME SPREAD RATINGS PER LOCAL CODE.



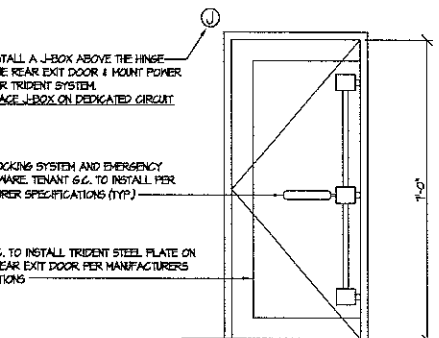
**6 CASHWRAP POWER**  
SCALE: 3/8" = 1'-0"



**7 ADA CABINET 'L38' DETAILS**  
SCALE: 3/8" = 1'-0"



**8 BACKWRAP ELEVATION**  
SCALE: 1/2" = 1'-0"



**9 TYP. REAR DOOR ELEVATION**  
SCALE: 1/2" = 1'-0"

REGISTRATION SEAL  
**FREDERICK J. GOGLIA**  
 ARCHITECT, N.CARB. P.D.  
 1880 CRAIG ROAD, SUITE 300  
 ST. LOUIS, MO 63148  
 PH. (314) 485-2400 FAX (314) 485-2800  
 WWW.FJG.COM

**Gamestop**  
 SHOPS AT STRATFORD HILLS  
 707 FOREST HILL AVENUE  
 RICHMOND, VIRGINIA 23225  
 STORE #2444

ELEVATIONS/DETAILS/SCHEDULES  
 PROJECT NO: 100922  
 DRAWN BY: JGM  
 CHECKED BY: JGM  
 ISSUE DATE: 05/04/16

A2