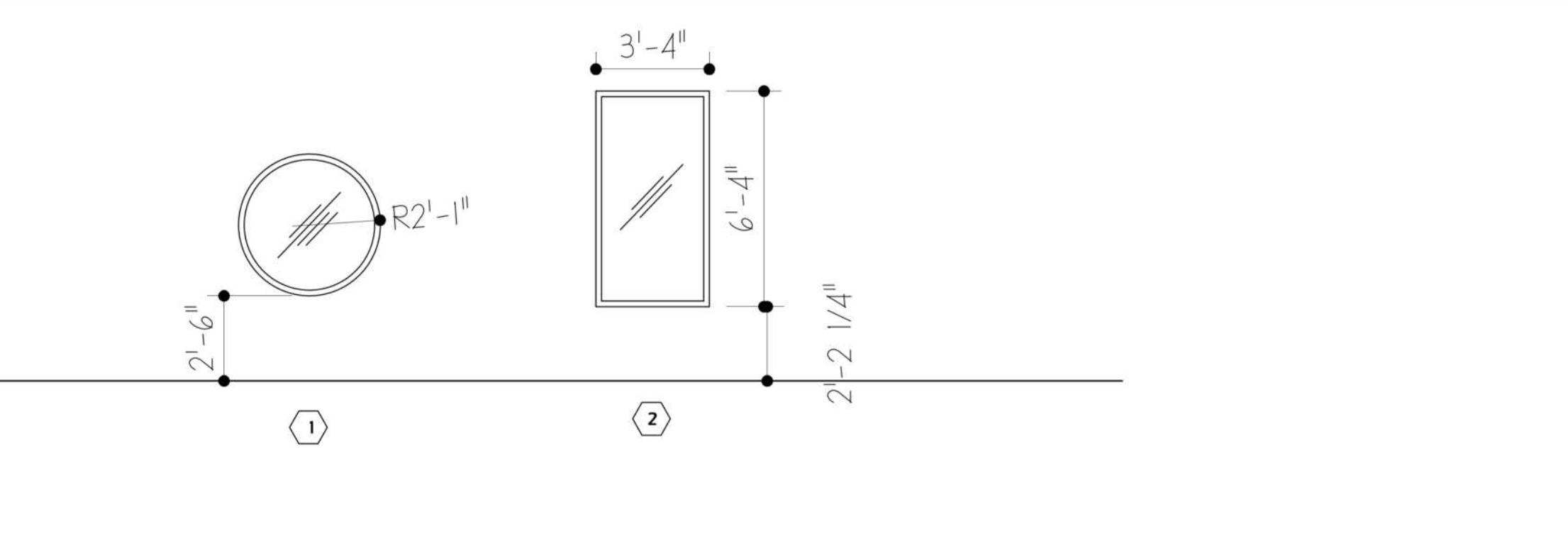


Door Schedule										
Door #	Door					Door Frame		Hardware	Threshold	Notes
	Width	Height	Thickness	Material	Type	Material	Finish			
101	3'-0"				A					EXISTING STOREFRONT, PH
102	3'-0"									EXISTING STOREFRONT, PH
103	3'-0"									EXISTING
104	3'-0"									EXISTING
105	3'-0"									EXISTING
106	(2)3'-0"	7'-0"	1-3/4"	HMTL	C	HMTL	PT-X			WINDOW, 30" KICKPLATE DOUBLE ACTING
107	3'-0"	7'-0"	1-3/4"	HMTL	B	HMTL	PT-X			PL, 15" KICKPLATE
108	3'-0"	7'-0"	1-3/4"	HMTL	B	HMTL	PT-X			PH, ACL
109	3'-0"	7'-0"	1-3/4"	HMTL	B	HMTL	PT-X			PL, 15" KICKPLATE
110	3'-0"	7'-0"	1-3/4"	HMTL	B	HMTL	PT-X			
111	3'-0"	7'-0"	1-3/4"	HMTL	F	HMTL	PT-X			30" KICKPLATE, WINDOW
112	3'-0"	7'-0"	1-3/4"	HMTL	F			ALUM.		30" KICKPLATE, WINDOW
113	2(3'-0")	7'-0"	1-3/4"	HMTL	C		PT-X			
114	8'-0"	8'-0"			D					OVERHEAD
115	3'-0"	7'-0"	1-3/4"	MTL	B					30" KICK PLATE*, ACL, PH
116	2(3'-0")	7'-0"	1-3/4"	HMTL	C					30" KICK PLATE*
117	3'-0"	7'-0"	1-3/4"	HMTL	F	HMTL	PT-X	ALUM.		30" KICK PLATE*, WINDOW
118	3'-0"									EXISTING
120	3'-0"									EXISTING
121	3'-0"									EXISTING, ACL
122	(2)3'-0"									EXISTING
123	3'-0"									EXISTING, ACL
124	3'-0"									EXISTING
125	3'-0"	7'-0"	1-3/4"	W/D	B					PH
126	3'-0"	7'-0"	1-3/4"	MTL	E					
127	3'-0"	7'-0"	1-3/4"	HMTL	B					

MTL - Insulated Metal  
HMTL - Hollow Metal  
PNT - Painted  
PH - PANIC HARDWARE  
SCW - Solid Core Wood  
CO - Casped Opening  
PL - Privacy Latch  
ACL - Automatic Closer  
TMP - Tempered Glass

Notes:  
1) See 4/A1.0 for 'Door Types.'  
2) Tenant to select hardware with GC.  
3) All doors shall comply with Section 4.13.9 for Accessible Door Hardware and 4.13.14 for door surfaces for wheelchair users.

DOOR SCHEDULE 1



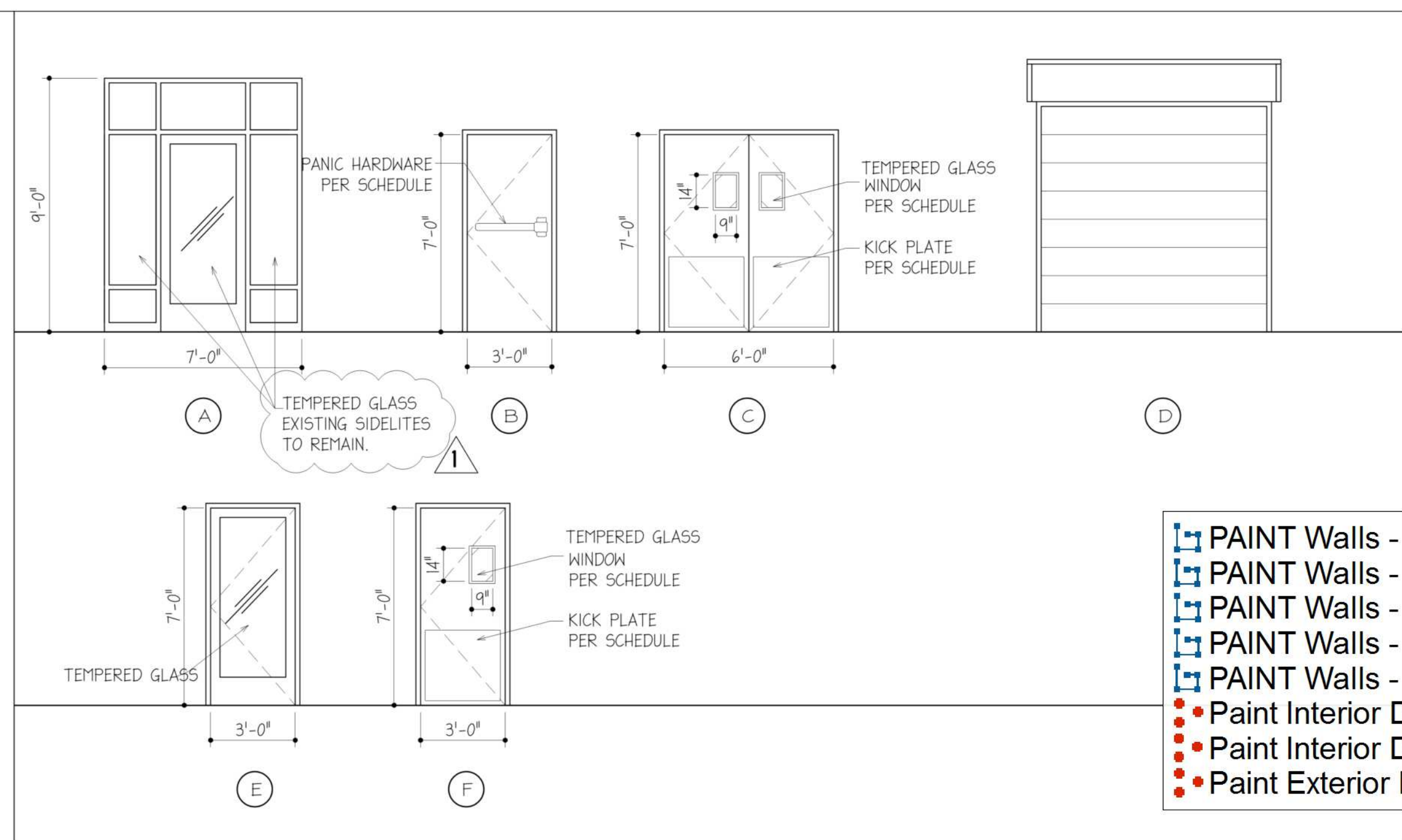
WINDOW TYPES 2

Window Schedule									
Wdw	Window				Frame		Hardware	Notes	
	Width	Height	Thickness	Material	Type	Material			Finish
1	4'-2"	4'-2"	3'-0"	TMP	FIXED	AL, PTD	PT-X		
2	3'-0"	3'-0"	3'-0"	TMP	FIXED	AL, PTD	PT-X		
3	N/A								

Notes:  
1) See 3/A1.0 for 'Window Types.'  
2) Tenant to select hardware with GC.

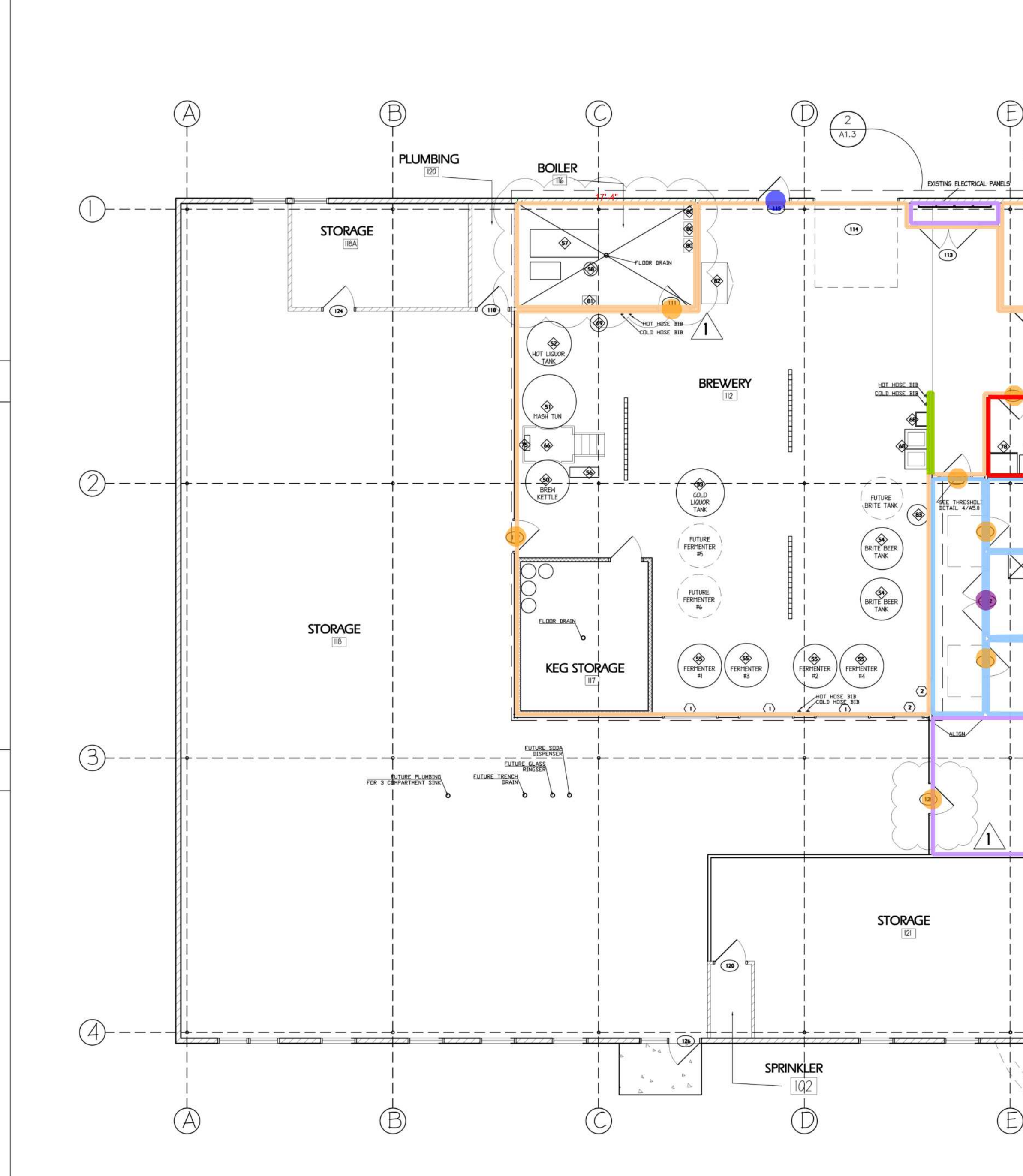
MTL - Insulated Metal  
HMTL - Hollow Metal  
PNT - Painted  
AL - ALUMINUM  
TMP - Tempered Glass

WINDOW SCHEDULE 3



DOOR TYPES 4

PAINT Walls - Prime only to 8'-0" + Finsih Coat to Full He...	326.9 FT
PAINT Walls - 1/2 Height	27.4 FT
PAINT Walls - 9'-6"	223.6 FT
PAINT Walls - 9'-6" - Rustoleum w/Additive	37.4 FT
PAINT Walls - Full Height	128.2 FT
Paint Interior Door & Frame	11.0 EA
Paint Interior Door & Frame - Double	3.0 EA
Paint Exterior Door & Frame	1.0 EA



BUILDING PLAN 5

- SYMBOLS:
- 3A WALL TYPE
  - 101 ROOM NUMBER
  - EQUIPMENT NUMBER
  - 1 WINDOW NUMBER
  - 102 DOOR NUMBER
  - 2/AT ENLARGED PLAN
  - EXISTING CONSTRUCTION

- GENERAL NOTES:
- INTERIOR WALL PARTITIONS ARE 3-5/8" METAL STUD UNLESS OTHERWISE NOTED.
  - CONTRACTOR TO VERIFY ALL EXISTING DIMENSIONS AND CONDITIONS.
  - REFER TO A4.0 FOR PLAN DETAILS, WALL TYPES AND INTERIOR ELEVATIONS.
  - REFER TO MEP DRAWINGS FOR ALL ELECTRICAL & MECHANICAL DETAILS.
  - ALL ELECTRICAL OUTLETS IN BREWERY TO BE WATERPROOF GFI.
  - IN LIEU OF DETAILS, SEE MANUFACTURER'S SPECIFICATION FOR INSTALLATION DETAILS AND REQUIREMENTS.

ADDENDA / REVISIONS

DATE	USE	INITIALS
2015.07.21	REVIEW	MTC
2016.04.10	REVIEW	KMP
2016.06.16	PERMIT	KMP
2016.07.12	REVISION 1	KMP

Project:  
6 Bears and a Goat Brewery  
Stafford, VA

Sheet:  
New Work Plan  
Door, Finish, Window Schedules

Issue:  
PERMIT

Date:  
6-16-2016

Sheet No:  
**A1.1**

1/8"=1'-0" 5