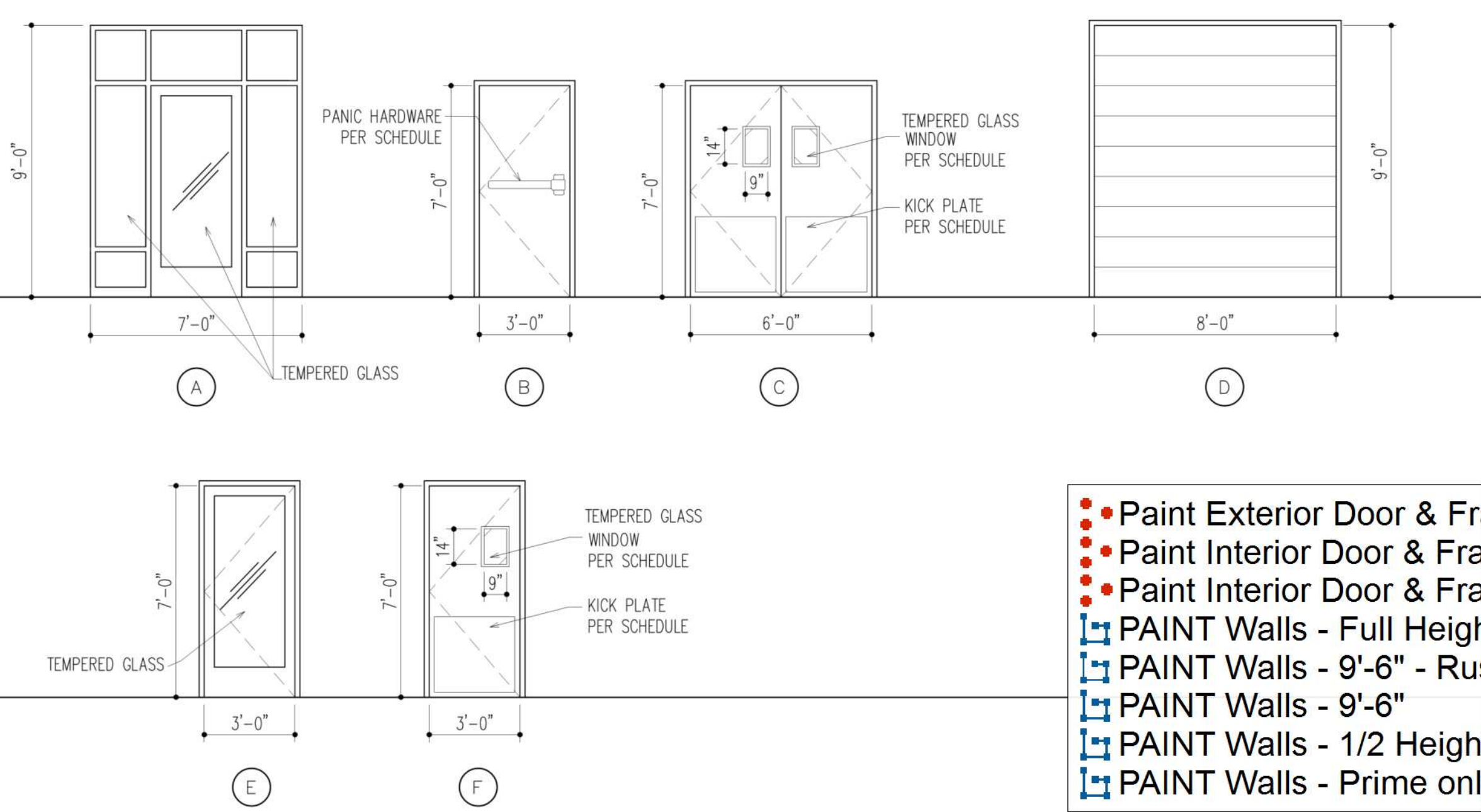


Door Schedule									
Door #	Door				Door Frame		Hardware	Threshold	Notes
	Width	Height	Thickness	Material	Type	Material			
101	3'-0"				A				EXISTING STOREFRONT, PH
102	3'-0"								EXISTING STOREFRONT, PH
103	3'-0"								EXISTING
104	3'-0"								EXISTING
105	3'-0"								EXISTING
106	(2)3'-0"	7'-0"	1-3/4"	WD	C	HMTL	PT-X		WINDOW, 30" KICKPLATE CLOSER
107									
108									
109	3'-0"	7'-0"	1-3/4"	WD	B	HMTL	PT-X		PL, 15" KICKPLATE
110	3'-0"	7'-0"	1-3/4"	WD	B	HMTL	PT-X	STDR. LOCK	15" KICKPLATE
111	3'-0"	7'-0"	1-3/4"	WD	F	HMTL	PT-X	PASSAGE	30" KICKPLATE, WINDOW
112	3'-0"	7'-0"	1-3/4"	WD	F			PASSAGE	ALUM. 30" KICKPLATE, WINDOW, CLOSER
113	2(3'-0")	7'-0"	1-3/4"	WD	C		PT-X		
114	8'-0"	9'-0"			D				OVERHEAD
115	3'-0"	7'-0"	1-3/4"	MTL	B				30" KICK PLATE*, ACL, PH
116	2(3'-0")	7'-0"	1-3/4"	WD	C	HMTL		PASSAGE	30" KICK PLATE*
117	3'-0"	7'-0"	1-3/4"	WD	F	HMTL	PT-X	PASSAGE	ALUM. 30" KICK PLATE*, WINDOW
118	3'-0"								EXISTING
120	3'-0"								EXISTING
121	3'-0"								EXISTING, ACL
122	(2)3'-0"								EXISTING
123	3'-0"								EXISTING, ACL
124	3'-0"								EXISTING
125	3'-0"	7'-0"	1-3/4"	WD	B	HMTL			PH
127	3'-0"	7'-0"	1-3/4"	WD	B	HMTL		PASSAGE	

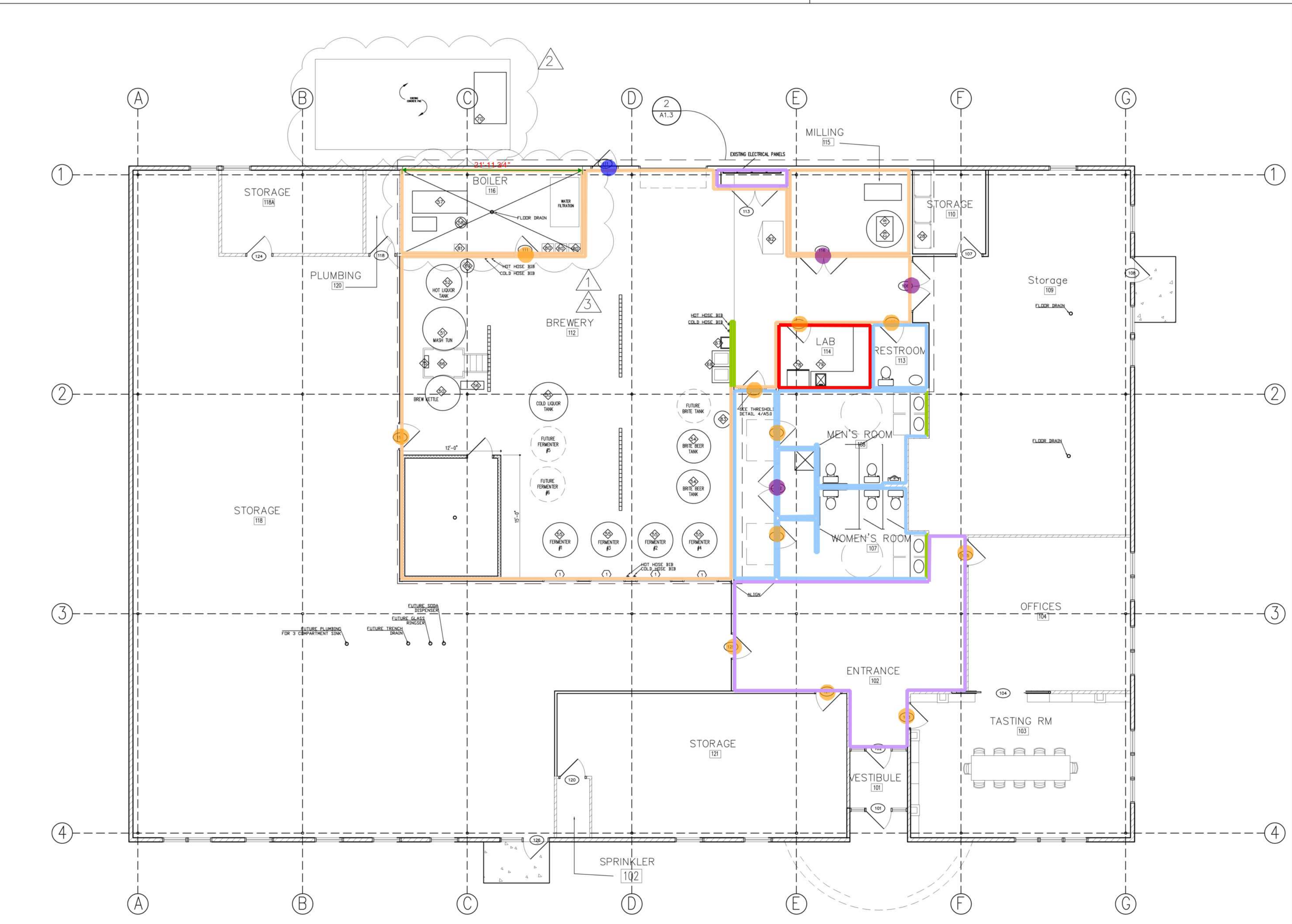
Notes:  
 1) See 4/A1.0 for 'Door Types.'  
 2) Tenant to select hardware with GC.  
 3) All doors shall comply with Section 4.13.9 for Accessible Door Hardware and 4.13.14 for door surfaces for wheelchair users.

MTL - Insulated Metal  
 HMTL - Hollow Metal  
 PNT - Painted  
 PH - PANIC HARDWARE  
 SCW - Solid Core Wood  
 CO - Cased Opening  
 PL - Privacy Latch  
 ACL - Automatic Closer  
 TMP - Tempered Glass

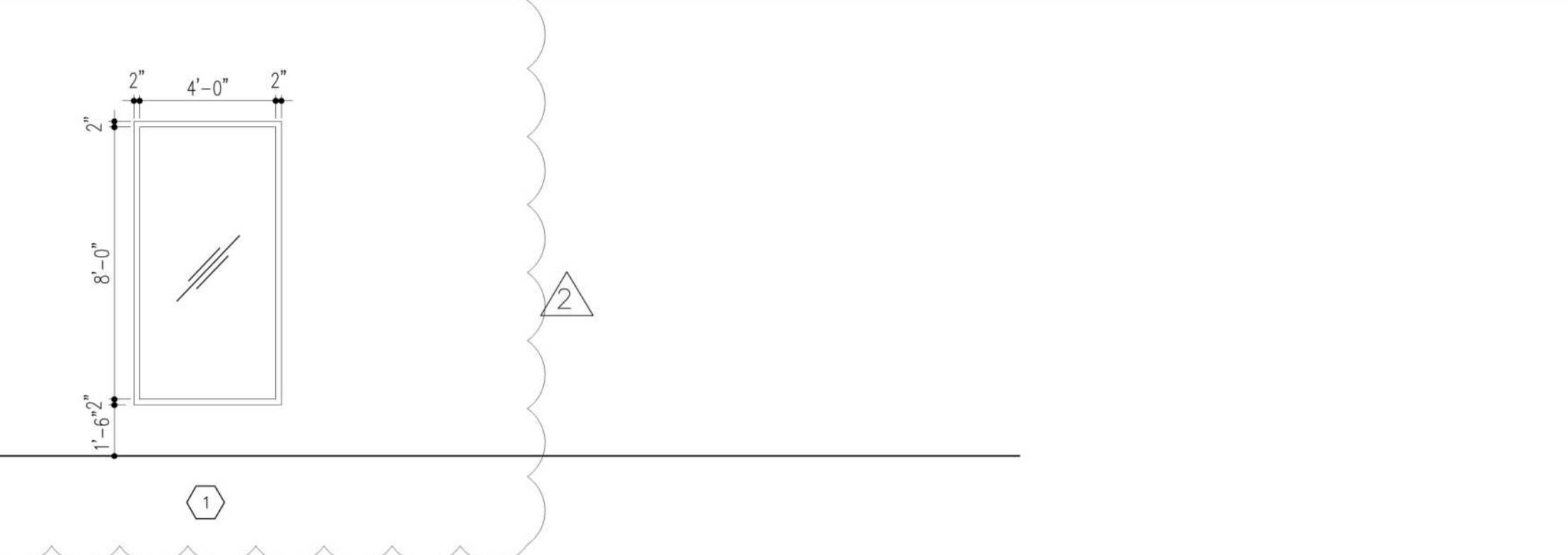


- Paint Exterior Door & Frame ● 1.0 EA
- Paint Interior Door & Frame - Double ● 3.0 EA
- Paint Interior Door & Frame ● 11.0 EA
- PAINT Walls - Full Height ■ 128.5 FT
- PAINT Walls - 9'-6" - Rustoleum w/Additive ■ 37.5 FT
- PAINT Walls - 9'-6" ■ 224.2 FT
- PAINT Walls - 1/2 Height ■ 27.4 FT
- PAINT Walls - Prime only to 8'-0" + Finish Coat to Full Height ■ 337.0 FT

DOOR TYPES



DOOR SCHEDULE



WINDOW TYPES

Window Schedule									
Wdw	Window				Frame		Hardware	Notes	
	Width	Height	Thickness	Material	Type	Material			Finish
1	4'-4"	8'-4"	3'-0"	TMP	FIXED	AL, PTD	PT-1	CENTER GLAZE	
2									
3									

Notes:  
 1) See 3/A1.0 for 'Window Types.'  
 2) Tenant to select hardware with GC.

MTL - Insulated Metal  
 HMTL - Hollow Metal  
 PNT - Painted  
 AL - ALUMINUM  
 TMP - Tempered Glass

WINDOW SCHEDULE

BUILDING PLAN

- SYMBOLS:
- 3A WALL TYPE
  - 101 ROOM NUMBER
  - ◇ EQUIPMENT NUMBER
  - ① WINDOW NUMBER
  - ② DOOR NUMBER
  - 2/A1.7 ENLARGED PLAN
  - EXISTING CONSTRUCTION

- GENERAL NOTES:
- INTERIOR WALL PARTITIONS ARE 3-5/8" METAL STUD UNLESS OTHERWISE NOTED.
  - CONTRACTOR TO VERIFY ALL EXISTING DIMENSIONS AND CONDITIONS.
  - REFER TO A4.0 FOR PLAN DETAILS, WALL TYPES AND INTERIOR ELEVATIONS.
  - REFER TO MEP DRAWINGS FOR ALL ELECTRICAL & MECHANICAL DETAILS.
  - ALL ELECTRICAL OUTLETS IN BREWERY TO BE WATERPROOF GFI
  - IN LIEU OF DETAILS, SEE MANUFACTURER'S SPECIFICATION FOR INSTALLATION DETAILS AND REQUIREMENTS.

ADDENDA / REVISIONS		
DATE	USE	INITIALS
2015.07.21	REVIEW	MTC
2016.04.10	REVIEW	KMP
2016.06.16	PERMIT	KMP
2016.07.12	REVISION 1	KMP
2016.07.20	REVISION 2	KMP
2016.08.01	REVISION 3	KMP

Project:  
6 Bears and a Goat Brewery  
Stafford, VA

Sheet:  
New Work Plan  
Door, Finish, Window Schedules

Issue:  
PERRAWT

Date:  
8/16/2016

Sheet No:  
A1.1

1/8" = 1'-0" 5