

S:\Jones Lang LaSalle\7202 Glen Forest Ave\#### - Cystic Fibrosis Foundation\DW65\Space Plans\1ST FLOOR-ep02.dwg Thursday, August 18, 2016 7:24:08 PM



evolve
architecture

1111 East Main Street
Suite 150
Richmond, VA 23219
Tel: (804) 649-9400
Fax: (804) 649-9475
evolvearchitecture.com

CYSTIC FIBROSIS FOUNDATION

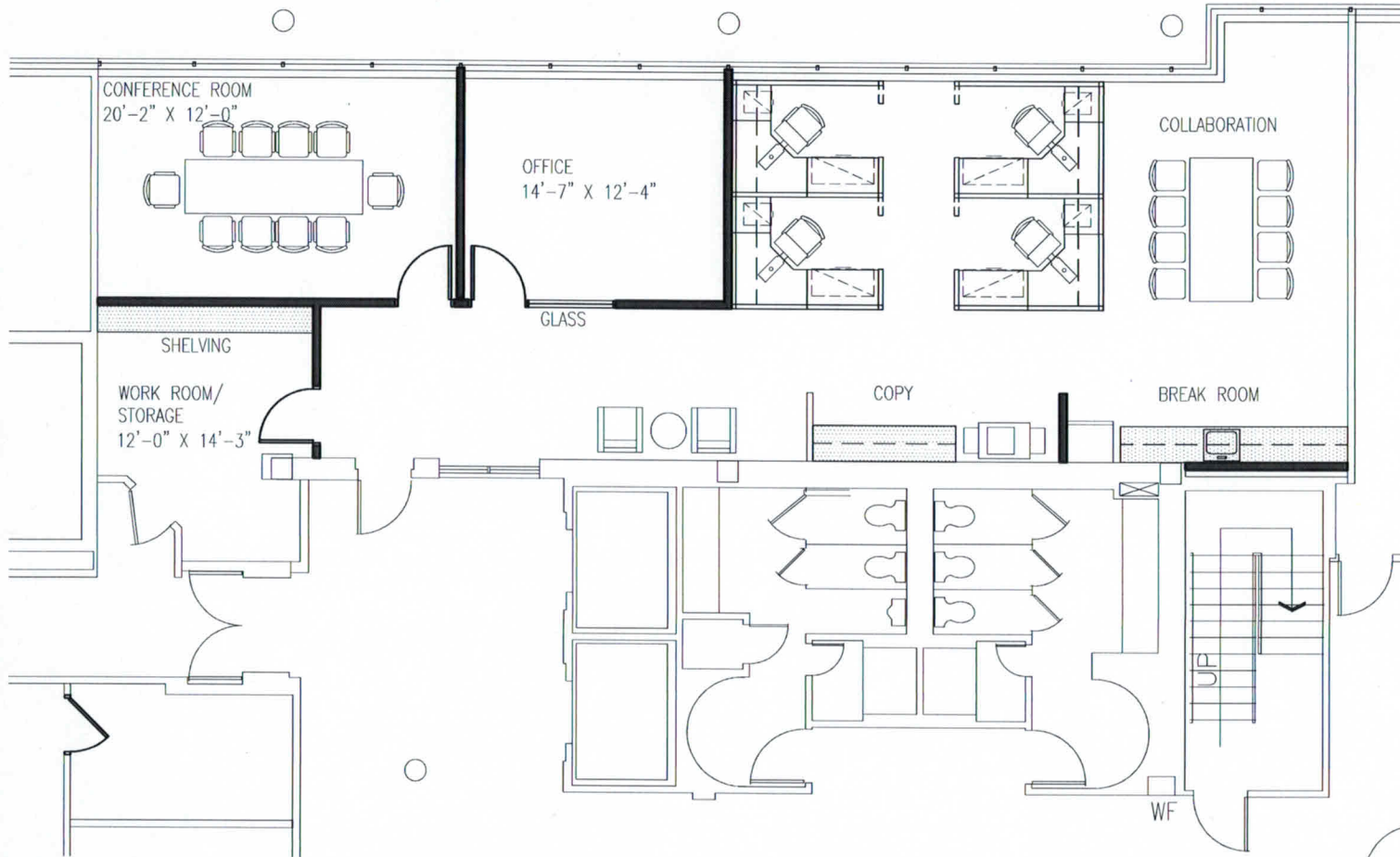
SUITE 102

7202 GLEN FOREST DRIVE
RICHMOND, VA

DATE ISSUED: 7/1/16
REVISIONS: 8/18/16

JOB NUMBER:
DRAWN BY: ECC
CHECKED BY: ECC

I OF I



1 SPACE PLAN

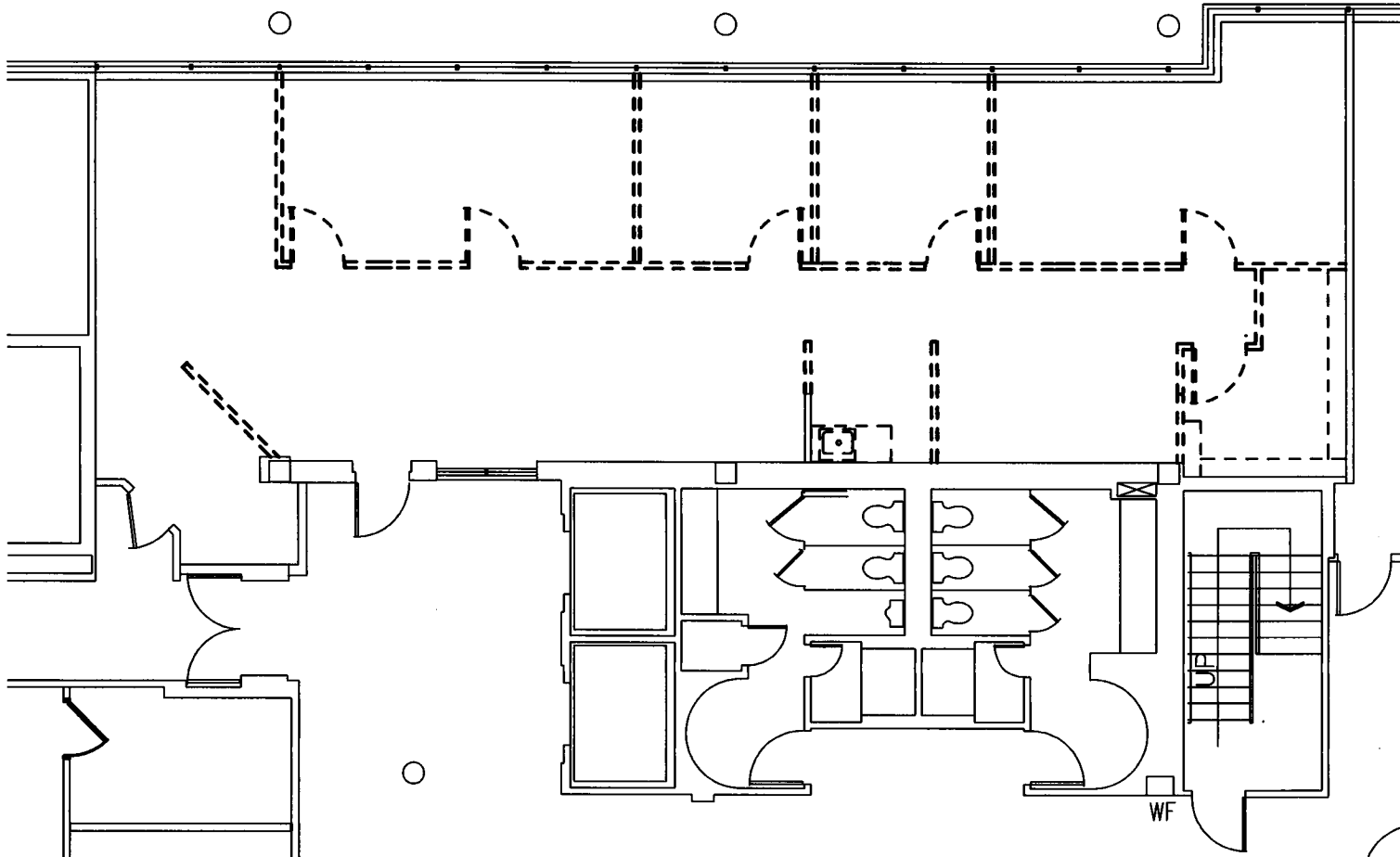
LEGEND:	
	NEW WALL
	EXISTING WALL
	NEW DOOR
	EXISTING DOOR
	NEW CASEWORK
	EXISTING CASEWORK

S:\James Long LeBallis\7202 Glen Forest Ave\11111 - Cystic Fibrosis Foundation\DWG\Space Plans\1ST FLOOR-ep02.dwg Thursday, August 18, 2016 7:26:12 PM



evolve
architecture

1111 East Main Street
Suite 150
Richmond, VA 23219
Tel: (804) 649-9400
Fax: (804) 649-9475
evolvearchitecture.com



**CYSTIC
FIBROSIS
FOUNDATION**

SUITE 102

7202 GLEN FOREST
DRIVE
RICHMOND, VA

1 DEMO PLAN

DATE ISSUED: 7/1/16
REVISIONS: 8/18/16

JOB NUMBER:
DRAWN BY: ECC
CHECKED BY: ECC