

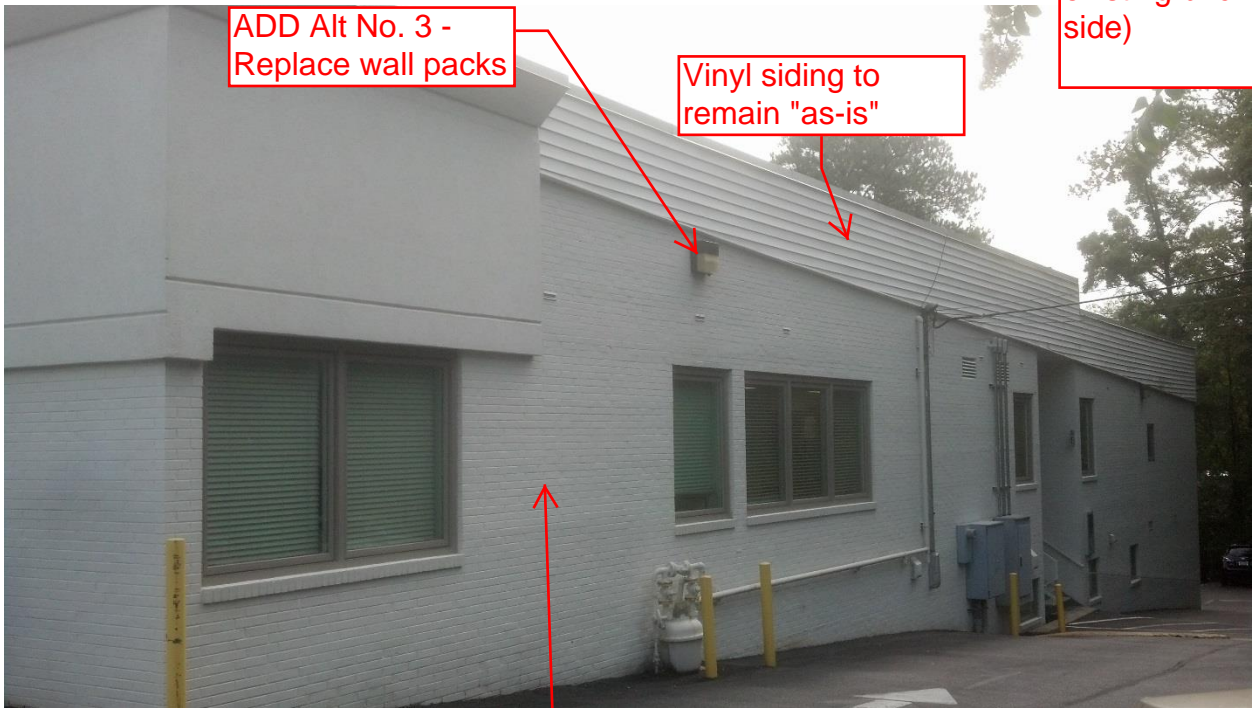
8503 Patterson Avenue (9/4/15)

ADD Alternate No. 3 - Replace all wall packs



ADD Alternate No. 2 - Remove EIFS at columns and install faux stone (4 places)

Base Price - prep brick and repaint. ADD Alternate No. 1 - Install EIFS over existing brick (West side)



ADD Alt No. 3 - Replace wall packs

Vinyl siding to remain "as-is"

Base Price - South wall - prep existing brick and repaint



North (front)
elevation
Base Price - prep
brick and repaint
ADD Alt No. 1 -
install EIFS over
brick



North (front)
elevation
Base Price - prep
brick and repaint
ADD Alt No. 1 -
install EIFS over
brick

Base Price - Paint handrails, door and window frames

ADD Alt No. 3 - Replace wall packs

Base Price - Repaint soffits. ADD Alt No. 3 - Replace soffits and replace recessed light fixtures

ADD Alt No. 1 - Furr and install EFIS over decorative masonry

Base Price - Paint stairs and handrails



ADD Alt No. 2 - Install faux stone at this entrance

Base Price - prep existing brick and repaint. ADD Alt No. 1 - install EIFS over existing brick



EAST
ENTRANCE
➔

Base Price - Prep
existing brick and
repaint. Paint
stairs/handrails,
paint soffit