

HOOD INFORMATION - Job#2791546

HOOD NO.	TAG	MODEL	LENGTH	MAX. COOKING TEMP.	EXHAUST PLENUM RISER(S)						TOTAL SUPPLY CFM	HOOD CONSTRUCTION	HOOD CONFIG.		
					TOTAL EXH. CFM	WIDTH	LENG.	HEIGHT	DIA.	CFM			S.P.	END TO END	ROW
1		5424 EX-2-PSP-F	10' 0.00"	600 Deg.	2500			4'	16'	2500	-0.606"	2000	430 SS Where Exposed	ALONE	ALONE
2		5424 EX-2	14' 8.00"	600 Deg.	3667			4'	14'	1833	-0.535"	0	430 SS Where Exposed	ALONE	ALONE
3		186 MISC-PSP	14' 2.00"	300 Deg.	0							2930	430 SS Where Exposed	ALONE	ALONE

HOOD INFORMATION

HOOD NO.	TAG	FILTER(S)					LIGHT(S)			UTILITY CABINET(S)				FIRE SYSTEM PIPING	HOOD HANGING WGHT		
		TYPE	QTY.	HEIGHT	LENGTH	EFFICIENCY @ 9 MICRONS	QTY.	TYPE	WIRE GUARD	LOCATION	SIZE	FIRE SYSTEM TYPE	SIZE			ELECTRICAL MODEL #	SWITCHES QUANTITY
1		SS Baffle with Handles	7	16'	16'	30%	3	L55 Series E26	NO						YES	576 LBS	
2		SS Baffle with Handles	11	16'	16'	30%	5	L55 Series E26	NO	Left	12"x54"x24"	Ansul R102	3.0/3.0/1.5	SC-231110FP	1 Light 1 Fan	YES	747 LBS
3							0								NO	191 LBS	

HOOD OPTIONS

HOOD NO.	TAG	OPTION
1		FIELD WRAPPER 18.00' High Front, Left, Right BACKSPLASH 80.00' High X 120.00' Long 430 SS Vertical
2		FIELD WRAPPER 18.00' High Front, Left, Right BACKSPLASH 80.00' High X 188.00' Long 430 SS Vertical

PERFORATED SUPPLY PLENUM(S)

HOOD NO.	TAG	POS.	LENGTH	WIDTH	HEIGHT	TYPE	RISER(S)				
							WIDTH	LENG.	DIA.	CFM	S.P.
1		Front	120'	18'	6'	MUA	12"	28"		665	0.168"
							12"	28"		665	0.168"
							12"	28"		665	0.168"
3		Front	170'	18'	6'	MUA	12"	28"		732	0.201"
							12"	28"		732	0.201"
							12"	28"		732	0.201"

GREASE DUCT SPECIFICATIONS:
 PROVIDE GREASE DUCT EQUAL TO VENTILATION DIRECT MODEL "VDW" ROUND 20 GAUGE 430 STAINLESS STEEL DUCTWORK. MODEL "VDW" IS LISTED TO UL-1978 AND IS INSTALLED USING "V" CLAMP LOCKING CONNECTIONS SEALED WITH 3M FIRE BARRIER 2000 PLUS. MODEL "VDW" DOES NOT REQUIRE WELDING PROVIDING IT HAS BEEN INSTALLED PER THE MANUFACTURES INSTALLATION GUIDE.
 PROVIDE RATED ACCESS DOORS AT EVERY CHANGE IN DIRECTION AND EVERY 12' ON CENTER. PER MANUFACTURES LISTING MODEL "VDW" HORIZONTAL RUNS LESS THAN 75 FT. CAN BE SLOPED 1/16" PER 12", HORIZONTAL RUNS MORE THAN 75 FT. CAN BE SLOPED 3/16" PER 12". DUCT SHOULD BE SLOPED AS MUCH AS POSSIBLE TO REDUCE THE CHANCE OF GREASE ACCUMULATION IN HORIZONTAL RUNS.
 IF THE DUCT IS WITHIN 18 INCHES OF COMBUSTIBLE MATERIAL, PROVIDE UL-2221 LISTED DOUBLE WALL GREASE DUCT EQUAL TO VENTILATION DIRECT MODEL "VDW- 2R, 3R, OR 3Z" ROUND 20 GAUGE 430 STAINLESS INNER DUCT INSULATED WITH A 24 GAUGE 430 STAINLESS OUTER SHELL.

VENTILATION DIRECT RECOMMENDS THE USE OF LISTED, PRE-FABRICATED ROUND GREASE EXHAUST DUCT TO REDUCE STATIC PRESSURE IN THE SYSTEM, MINIMIZE INSTALLATION AND INSPECTION TIMES, AND ENSURE DUCT IS LIQUID TIGHT

HVAC DISTRIBUTION NOTE
 IT IS RECOMMENDED NOT TO INSTALL HIGH VELOCITY DIFFUSERS OR HVAC RETURNS WITHIN TEN (10) FEET OF THE EXHAUST HOOD. PERFORATED DIFFUSERS ARE RECOMMENDED.

VERIFY CEILING HEIGHT
 ___' - ___"
 HEIGHT REQUIRED TO VERIFY THAT HOOD FITS SPACE AND TO SIZE THE ENCLOSURE PANELS

CUSTOMER APPROVAL TO MANUFACTURE:

Approved as Noted	<input type="checkbox"/>
Approved with NO Exception Taken	<input type="checkbox"/>
Revise and Resubmit	<input type="checkbox"/>
SIGNATURE _____	
Your Title _____	Date _____

By : Brother's Mechanical
 7218 Twin Cedars Dr.
 Woodford Va. 22580
Stephen M. Smith

VX-2 Series with PSP Accessory Specification
 The model VX-2 with PSP Accessory is a compensating canopy hood rated for all types of cooking equipment. The hood shall have the size, shape and performance specified on drawings.
 Construction shall be type 430 stainless steel, with a #3 or #4 polish where exposed. The manufacturer, ETL and NSF shall determine the individual component construction. Construction shall be dependent on the structural application to minimize distortion and other defects. All seams, joints and penetrations of the hood enclosure to the lower outermost perimeter that directs and captures grease-laden vapor and exhaust gases shall have a liquid-tight continuous external weld in accordance with NFPA 96. The hood shall be wall type with a minimum of four connections for hanger rods. Connectors shall have 9/16" holes pre-punched in 1 1/4" x 1 3/4" angle iron at the factory to allow for hanger rod connection by others.
 The hood shall be furnished with UL classified filters, supplied in size and quantity as required by ventilator. The filters shall extend the full length of the hood and the filler panels shall not be more than 6' in width.
 The hood manufacturer shall supply complete computer generated submittal drawings including hood sections view(s) and hood plan view(s). These drawings must be available to the engineer, architect and owner for their use in construction, operation and maintenance.
 Exhaust duct collar to be 4' high with 1' flange. Duct sizes, CFM and static pressure requirements shall be as shown on drawings. Static pressure requirements shall be precise and accurate; air velocity and volume information shall be accurate within 1-ft increments along the length of the ventilator.
 UL incandescent light fixtures and globes shall be installed and pre-wired to a junction box. The light fixtures shall be installed with a maximum of 4'0" spacing on center and allow up to a 100 watt standard light bulb.
 The hood shall have:
 - A double wall insulated front to eliminate condensation and increase rigidity. The insulation shall have a flexural modulus of 475 EI, meet UL 181 requirements and be in accordance with NFPA 90A and 90B.
 - An integral front baffle to direct grease laden vapors toward the exhaust filter bank.
 - A built-in wiring chase provided for outlets and electrical controls on the hood face and shall not penetrate the capture area or require an external chase way.
 - Removable grease cup for easy cleaning.
 The hood shall be ETL Listed as "Exhaust Hood Without Exhaust Damper", NSF Listed and built in accordance with NFPA 96.
 The hood shall be listed for 450°F cooking surfaces at 150 CFM/ft, 600°F cooking surfaces at 200 CFM/ft, and 700°F cooking surfaces at 250 CFM/ft. The hood shall be ETL Listed as "Exhaust Hood Without Exhaust Damper".

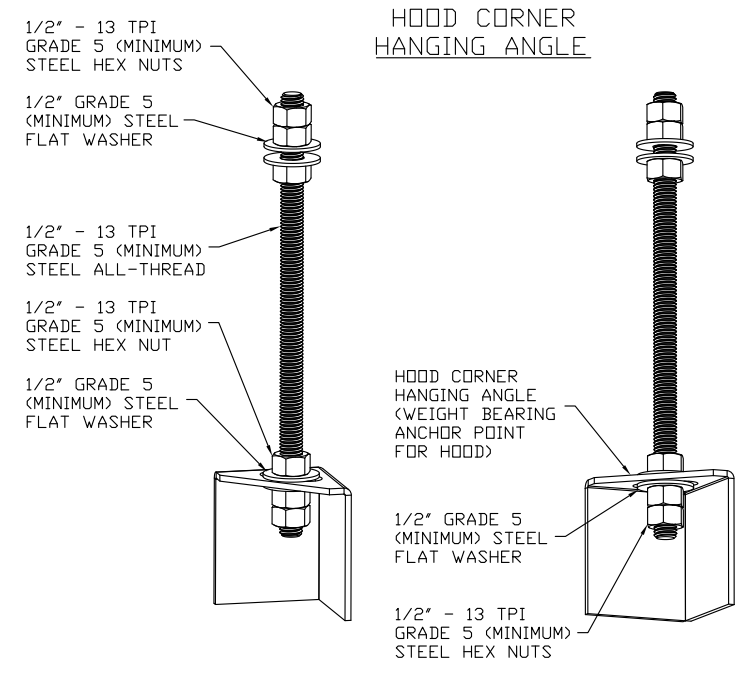
REVISIONS	
DESCRIPTION	DATE

Ventilation Direct
 Sales & Service
 14460 New Falls of Neuse Rd, Suite 149-293, Raleigh, NC, 27614 PHONE: (919) 573-1522 FAX: (919) 573-1523 EMAIL: info@ventilationdirect.com

6 Bears and a Goat
 Woodford, VA,

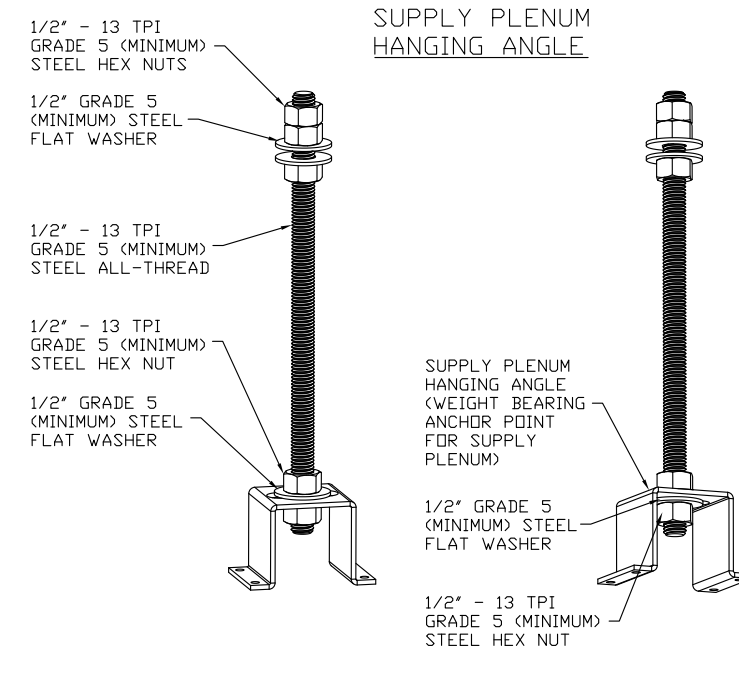
DATE: 10/3/2016
DWG.#: 2791546
DRAWN BY: WRB
SCALE: 3/4" = 1'-0"
MASTER DRAWING

SHEET NO.
 1



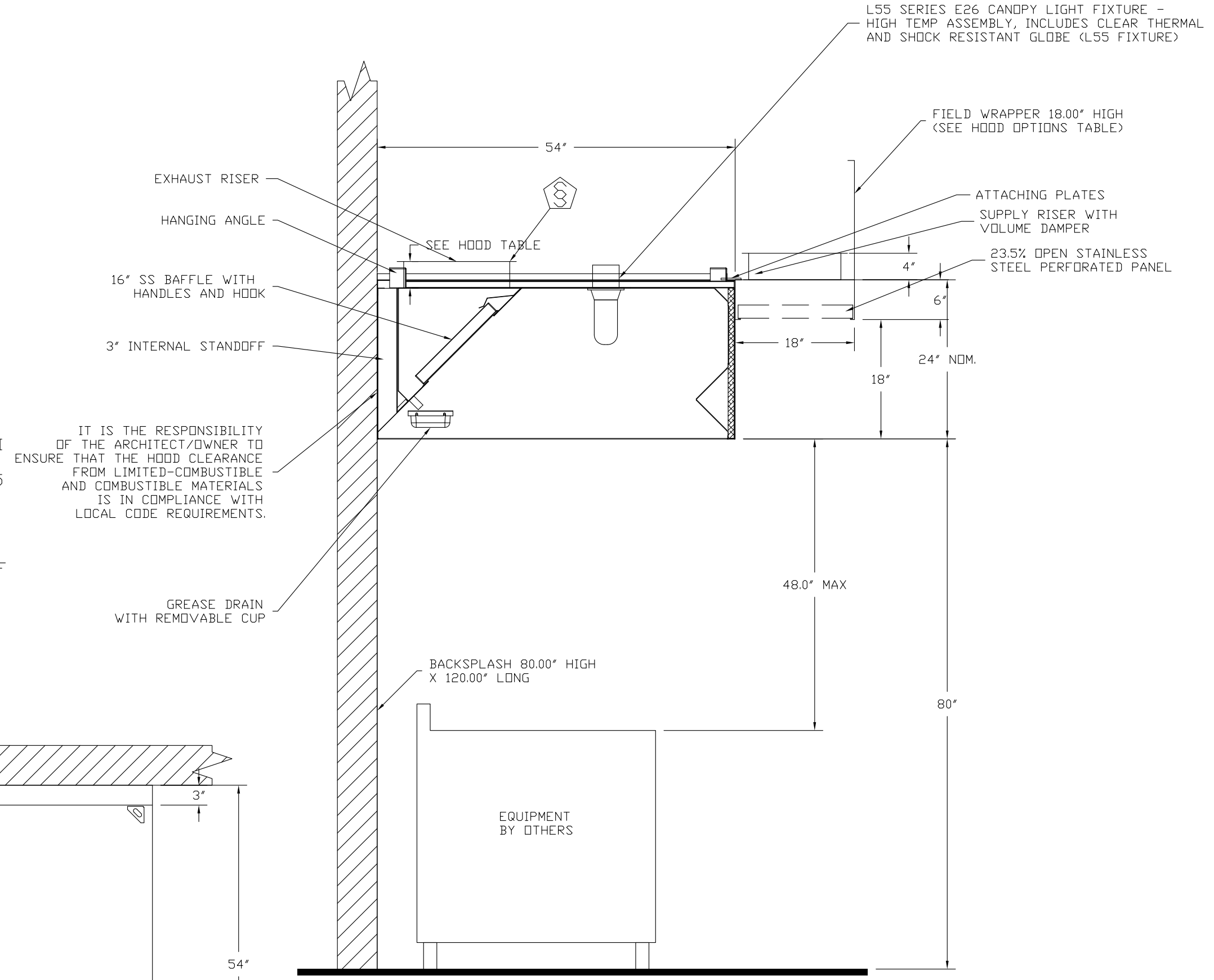
ASSEMBLY INSTRUCTIONS

HANGING ANGLE MUST BE SUPPORTED WITH 1/2" - 13 TPI GRADE 5 (MINIMUM) ALL-THREAD. SANDWICH HANGING ANGLES AND CEILING ANCHOR POINTS WITH 1/2" GRADE 5 (MINIMUM) STEEL FLAT WASHERS AND 1/2" - 13 TPI GRADE 5 (MINIMUM) HEX NUTS AS SHOWN. MUST USE DOUBLED HEX NUT CONFIGURATION BENEATH HOOD HANGING ANGLES AND ABOVE CEILING ANCHORS. MAINTAIN 1/4" OF EXPOSED THREADS BENEATH BOTTOM HEX NUT. TORQUE ALL HEX NUTS TO 57 FT-LBS.

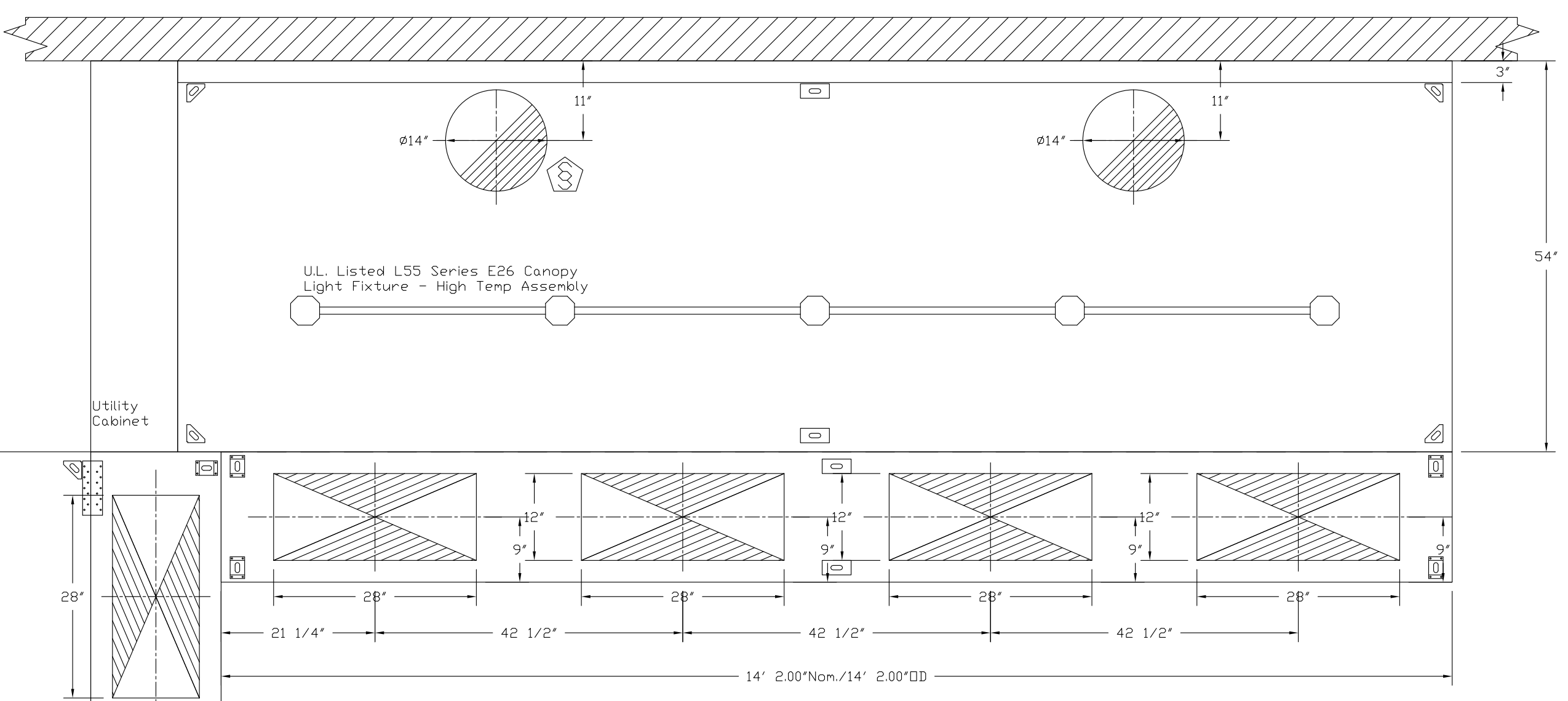


ASSEMBLY INSTRUCTIONS

HANGING ANGLE MUST BE SUPPORTED WITH 1/2" - 13 TPI GRADE 5 (MINIMUM) ALL-THREAD. SANDWICH HANGING ANGLES AND CEILING ANCHOR POINTS WITH 1/2" GRADE 5 (MINIMUM) STEEL FLAT WASHERS AND 1/2" - 13 TPI GRADE 5 (MINIMUM) HEX NUTS AS SHOWN. MUST USE DOUBLED HEX NUT CONFIGURATION ABOVE CEILING ANCHORS. SINGLE HEX NUT BENEATH HANGING ANGLE IS ACCEPTABLE FOR PSP HANGING ANGLES. MAINTAIN 1/4" OF EXPOSED THREADS BENEATH BOTTOM HEX NUT. TORQUE ALL HEX NUTS TO 57 FT-LBS.



SECTION VIEW - MODEL 5424EX-2-PSP-F HOOD - #1



PLAN VIEW - Hood #3 14' 2.00\"/>

(Hood Canopies are Used) Used And Listed As Site Built Captive Aire Brand. All Grease duct, Fans curbs and Equipment New.

New Fire Suppression Re-Piped for New Equipment.

Fire Suppression Permit Applied for Separately

By : Brother's Mechanical
7218 Twin Cedars Dr.
Woodford Va.22580

Stephen M. Smith

REVISIONS	
DESCRIPTION	DATE:

Sales & Service

www.ventilationdirect.com

14460 New Falls of Neuse Rd, Suite 149-293, Raleigh, NC, 27614 PHONE: (919) 573-1522 FAX: (919) 573-1523 EMAIL: info@ventilationdirect.com

6 Bears and a Goat
Woodford, VA,

DATE: 10/3/2016
DWG.#: 2791546
DRAWN BY: WRB
SCALE: 3/4" = 1'-0"
MASTER DRAWING

SHEET NO.
2

REVISIONS

NO.	DESCRIPTION	DATE



6 Bears and a Goat
Woodford, VA,

DATE: 10/3/2016

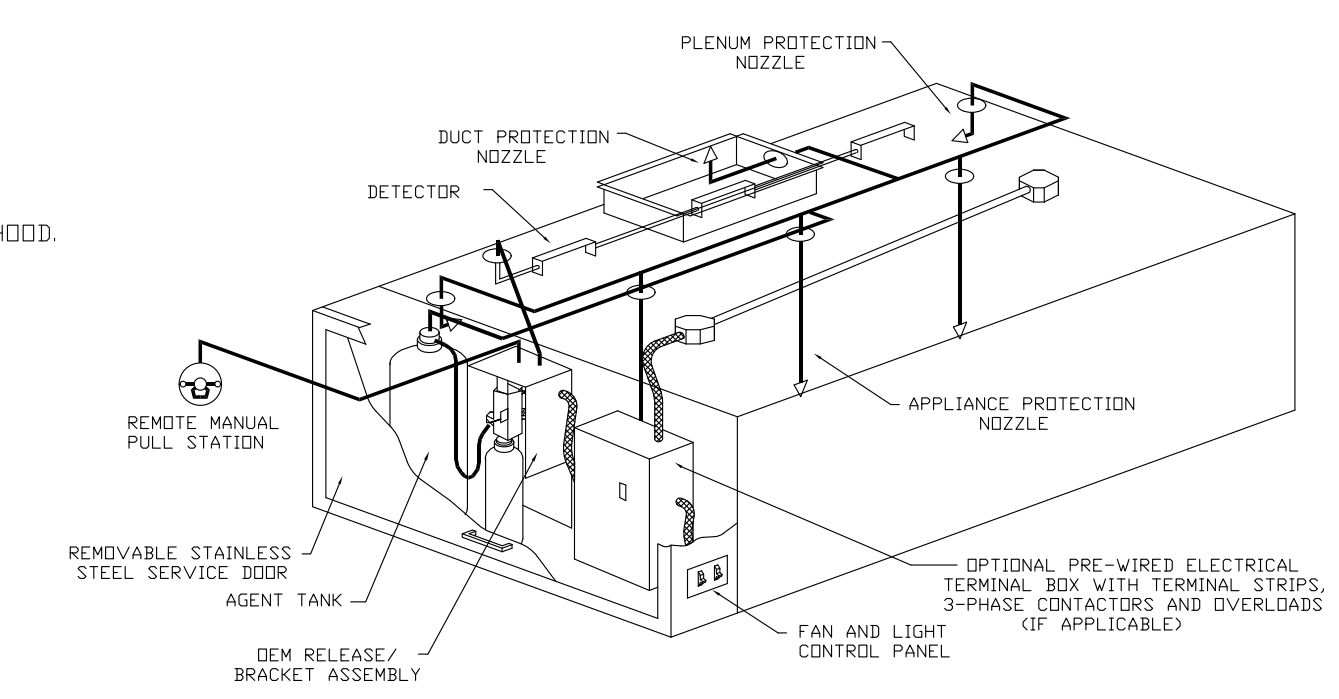
DWG.#: 2791546

DRAWN BY: WRB

SCALE: 1/2" = 1'-0"

MASTER DRAWING

SHEET NO.
4



Fire System Parts List Key

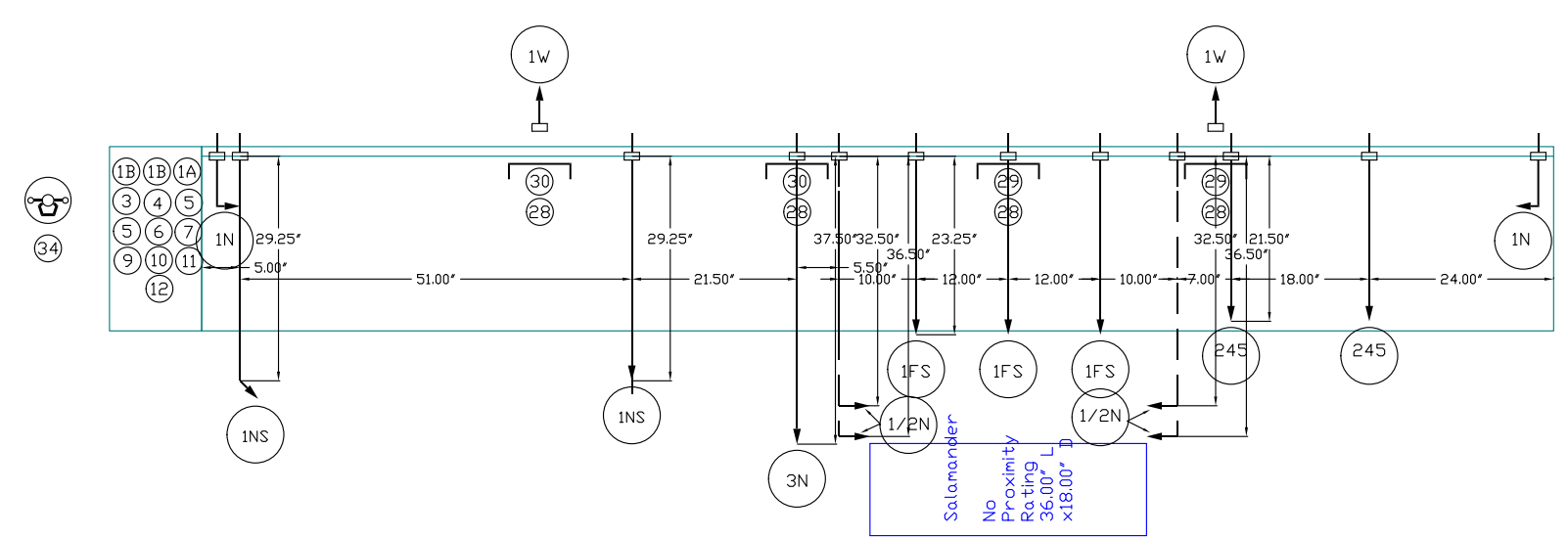
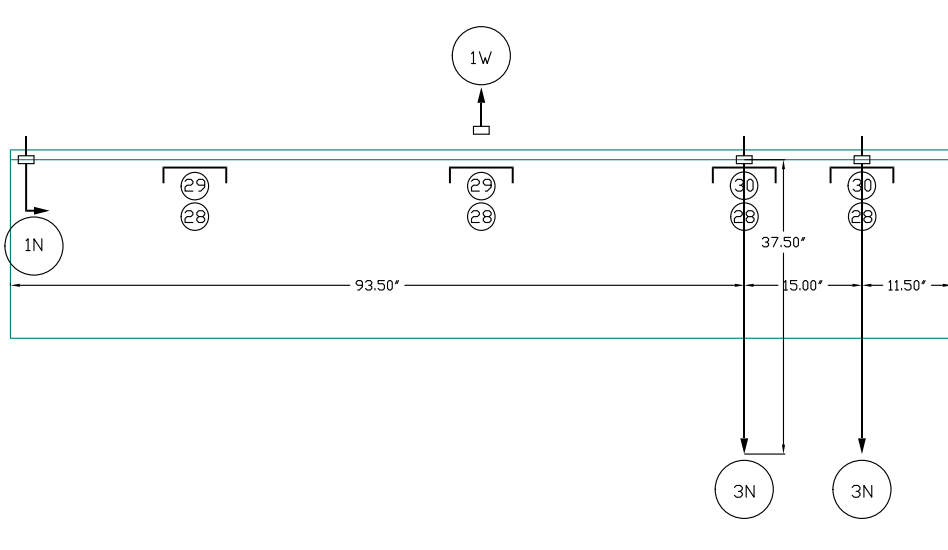
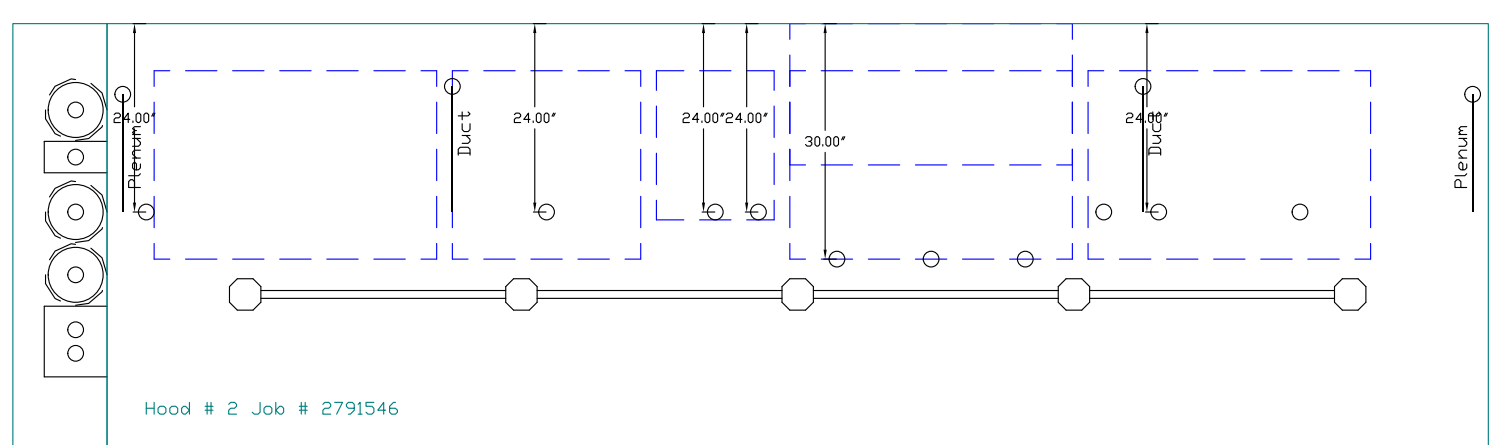
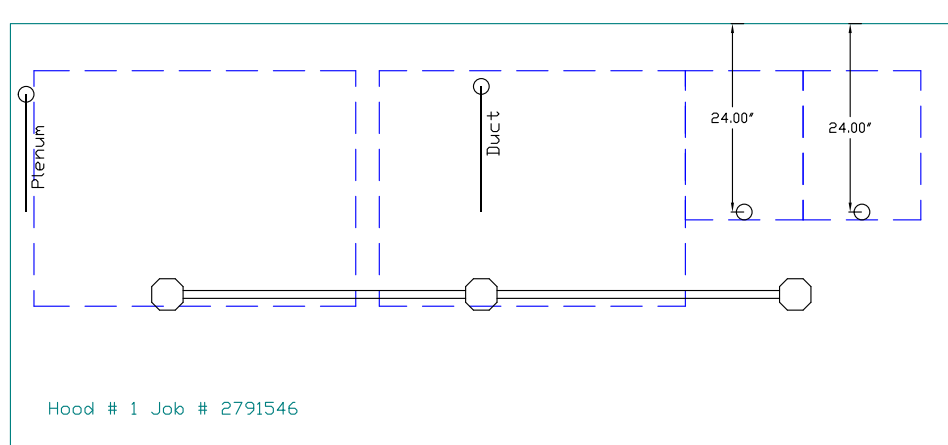
FIRE SYSTEM NO.	TAG	KEY NUMBER - PART DESCRIPTION	QTY. BY FACTORY	QTY. BY DIST.
1	0	0 - HOSE HOSE - Stainless Steel Actuation Hose, 42'	1	0
	1	1 - 1 - AT - 1.5 TANK(1A) - 1.5 Gallon SS Tank (for use with Automan Release, Actuator, or SS Enclosure (UL/ULC))	1	0
	1	1 - 1 - AT - 3.0 TANK(1B) - 3.0 Gallon SS Tank (for use with Automan Release, Actuator, or SS Enclosure (UL/ULC))	2	0
	3	3 - 3 - ANS-DEM REGULATED RELEASE - Ansul Regulated Mechanical Release/Bracket Assembly (79493)	1	0
	4	4 - 4 - ANS-DEMA ACTUATOR - Regulated DEM, R-102	1	0
	5	5 - 5 - LIQ-3.0 AGENT - Ansulex Low PH Wet Chemical Agent, 3 Gallon (UL) 79372	0	0
	6	6 - 6 - LIQ-1.5 AGENT - Ansulex Low PH Wet Chemical Agent, 1.5 Gallon (UL) 79694	0	1
	7	7 - 7 - 101-30 CARTRIDGE - Carbon Dioxide, 101-30, Cartridge (R-102)	0	1
	9	9 - 9 - 101-30 CARTRIDGE - Carbon Dioxide, 101-30, Cartridge (R-102) 19-15851	0	1
	10	10 - 10 - FLINK LINK - Test Link (1 test link)	0	1
	11	11 - 11 - MICRO-SDA MICROSWITCH KIT- Includes 2 switches and Mounting Hardware, Single Dual Electric Switch, One Standard Switch, One Alarm Bury Switch 437155	1	0
	12	12 - 12 - HOSE HOSE - Rubber Hose	1	0
	27	27 - 27 - QPSA-1/2 PULLEY SEAL - 1/2" Hood Seal (UL)	5	0
	34	34 - 34 - RPS-A REMOTE PULL STATION - Red composite (without wire rope) 434618 (Old Model #06-4833)	1	0
	35	35 - 35 - PE-LT PULLEY ELBOW - Low Temp. Pulley Elbow, Set Screw Type ANSUL Part #415670	5	0
	36	36 - 36 - PE-HT PULLEY ELBOW - High Temp Pulley Elbow, Compression Type	4	0

Fire System Information - Job#2791546

FIRE SYSTEM NO.	Tag	TYPE	SIZE	FLOW POINTS	INSTALLATION	
					SYSTEM	LOCATION ON HOOD
1		Ansul R102	30/30/15	26	Fire Cabinet Left	Left

- NOTES**
- FIELD PIPE DROPS AS SHOWN
 - SLEEVING, ELBOWS, TEES, AND NOZZLES SUPPLIED BY CAS
 - RELOCATE NOZZLES IF FLOW PATTERN IS BLOCKED BY SHELVING, SALAMANDERS, ETC.
 - MAXIMUM 9 ELBOWS IN SUPPLY LINE.
 - MINIMUM 72 INCHES OF AGENT LINE FROM TANK TO FIRST NOZZLE.
 - IF APPLICABLE, PRE-PIPED CHARBROILER DROPS ARE SHIPPED LOOSE.
 - FACTORY PIPING EXTENDS A MAXIMUM OF 6" ABOVE THE TOP OF THE HOOD.
 - APPLIANCE DIMENSIONS LISTED REPRESENT THE COOKING SURFACE SIZE, NOT THE OVERALL APPLIANCE SIZE.
 - THIS FIRE SYSTEM COMPLIES WITH UL 300 REQUIREMENTS

Job #: 2791546
Job Name: 6 Bears and a Goat
Drawn By:
System Size: ANSUL-30/30/15 Total FP required: 26
Hood # 1 10' 0.00' Long x 54' Wide x 24' High
Riser # 1 Size: 16" Dia.
Hood # 2 Metal Blow-Off Caps included.
Hood # 1 14' 8.00' Long x 54' Wide x 24' High
Riser # 1 Size: 14" Dia.
Riser # 2 Size: 14" Dia.
Hood # 2 Metal Blow-Off Caps included.



Down Assembly 4100' L x 3300' D	Down Assembly 2900' L x 3300' D	Fryer-M w/Pop Board High Proximity 1500' L x 1900' D	Fryer-M w/Pop Board High Proximity 1500' L x 1900' D
------------------------------------	------------------------------------	--	--

Griddle Assembly (1 FD) 3600' L x 2400' D	Gas Radiant Charbroiler High Proximity 2400' L x 2400' D	Fryer-M w/Pop Board High Proximity 1500' L x 1900' D	Range Shelf 60" Min. from Griddle Assembly 3600' L x 2400' D	Range-Med High Proximity 3600' L x 2400' D
--	--	--	--	--

- NOTES**
- FIELD PIPE DROPS AS SHOWN
 - SLEEVING, ELBOWS, TEES, AND NOZZLES SUPPLIED BY CAS
 - RELOCATE NOZZLES IF FLOW PATTERN IS BLOCKED BY SHELVING, SALAMANDERS, ETC.
 - MAXIMUM 9 ELBOWS IN SUPPLY LINE.
 - MINIMUM 72 INCHES OF AGENT LINE FROM TANK TO FIRST NOZZLE.
 - IF APPLICABLE, PRE-PIPED CHARBROILER DROPS ARE SHIPPED LOOSE.
 - FACTORY PIPING EXTENDS A MAXIMUM OF 6" ABOVE THE TOP OF THE HOOD.
 - APPLIANCE DIMENSIONS LISTED REPRESENT THE COOKING SURFACE SIZE, NOT THE OVERALL APPLIANCE SIZE.
 - THIS FIRE SYSTEM COMPLIES WITH UL 300 REQUIREMENTS

SPECIFICATIONS

THE RESTAURANT FIRE SUPPRESSION SYSTEM SHALL BE THE PRE-ENGINEERED TYPE WITH A FIXED NOZZLE AGENT DISTRIBUTION NETWORK. IT SHALL BE LISTED WITH UNDERWRITERS LABORATORIES, INC. (UL).

THE SYSTEM SHALL BE CAPABLE OF AUTOMATIC DETECTION AND ACTUATION WITH LOCAL OR REMOTE MANUAL ACTUATION. ACCESSORIES SHALL BE AVAILABLE FOR MECHANICAL OR ELECTRICAL GAS LINE SHUT-OFF APPLICATIONS.

THE EXTINGUISHING AGENT SHALL BE A POTASSIUM CARBONATE, POTASSIUM ACETATE-BASED FORMULATION DESIGNED FOR FLAME KNOCKDOWN AND SECUREMENT OF GREASE RELATED FIRES. IT SHALL BE AVAILABLE IN PLASTIC CONTAINERS WITH INSTRUCTIONS FOR LIQUID AGENT HANDLING AND USAGE.

THE REGULATED RELEASE MECHANISM SHALL BE COMPATIBLE WITH A FUSIBLE LINK DETECTION SYSTEM. THE FUSIBLE LINK SHALL BE SELECTED AND INSTALLED ACCORDING TO THE OPERATING TEMPERATURE IN THE VENTILATING SYSTEM. THE FUSIBLE LINK SHALL BE SUPPORTED BY A DETECTOR BRACKET/ LINKAGE ASSEMBLY.

Job #: 2791546
Job Name: 6 Bears and a Goat
Drawn By:
System Size: ANSUL-30/30/15 Total FP required: 26
Hood # 1 10' 0.00' Long x 54' Wide x 24' High
Riser # 1 Size: 0" x 0"
Hood # 2 14' 8.00' Long x 54' Wide x 24' High
Riser # 1 Size: 0" x 0"
Riser # 2 Size: 0" x 0"

LEGEND - FIRE CABINET ANSUL SYSTEM

- 1A 1.5 GALLON TANK
- 1B 3 GALLON TANK
- 2 DEM AUTOMAN RELEASE
- 3 DEM REGULATED RELEASE
- 4 DEM REGULATED ACTUATOR
- 5 ANSULEX LIQUID AGENT (3 GAL.)
- 6 ANSULEX LIQUID AGENT (1.5 GAL.)
- 7 CARTRIDGE (101-20)
- 8 CARTRIDGE (101-10)
- 9 CARTRIDGE (101-30)
- 9A CARTRIDGE (LT-A-101-30)
- 9B DOUBLE TANK CARTRIDGE
- 10 TEST LINK
- 11 DOUBLE MICROSWITCH
- 12 HOSE ASSEMBLY
- 1100 DUCT NOZZLE (430913)
- 24 DUCT NOZZLE (419337)
- 1W NOZZLE ASSEMBLY (419336)
- 1F NOZZLE ASSEMBLY (419333)
- 1N NOZZLE ASSEMBLY (419335)
- 1/2N NOZZLE ASSEMBLY (419334)
- 3N NOZZLE ASSEMBLY (419338)
- 245 NOZZLE ASSEMBLY (419340)
- 230 NOZZLE ASSEMBLY (419339)
- 2120 NOZZLE ASSEMBLY (419343)
- 250 NOZZLE ASSEMBLY (419342)
- 260 NOZZLE ASSEMBLY (419341)
- 28 DETECTOR BRACKET
- 29 LOW TEMP FUSIBLE LINK
- 30 HIGH TEMP FUSIBLE LINK
- MEV MECHANICAL GAS VALVE
- EGV ELECTRICAL GAS VALVE
- 34 REMOTE MANUAL PULL STATION
- S SWIVEL ADAPTOR

EXHAUST FAN INFORMATION - Job#2791546

FAN UNIT NO.	TAG	FAN UNIT MODEL #	CFM	ESP.	RPM	H.P.	B.H.P.	Ø	VOLT	FLA	WEIGHT (LBS.)	SONES
1	10'	EABDU15	2500	0.700	1252	1.000	0.6540	1	208	4.9	135	16.8
2	14'	EABDU15	1830	0.700	1066	1.000	0.4100	1	208	4.9	135	10.5
3	14'	EABDU15	1830	0.700	1066	1.000	0.4100	1	208	4.9	135	10.5

MUA FAN INFORMATION - Job#2791546

FAN UNIT NO.	TAG	FAN UNIT MODEL #	BLOWER	HOUSING	CFM	ESP.	RPM	H.P.	B.H.P.	Ø	VOLT	FLA	WEIGHT (LBS.)	SONES
4		EA-A2-G15	G15-PB	A2	4930	0.650	697	3.000	1.9260	1	208	18.7	416	13

FAN OPTIONS

FAN UNIT NO.	TAG	OPTION (Qty. - Descr.)
1	10'	1 - Grease Box
2	14'	1 - Grease Box
3	14'	1 - Grease Box

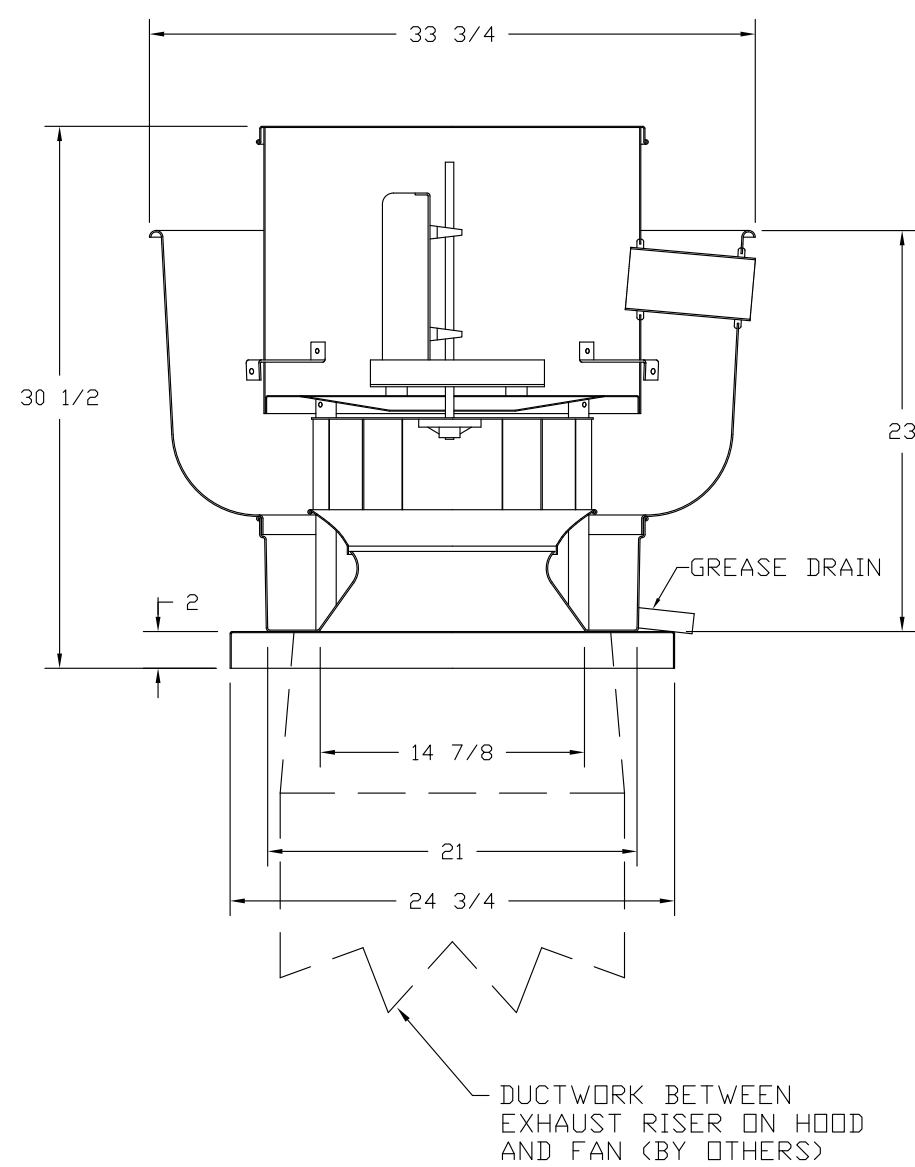
FAN ACCESSORIES

FAN UNIT NO.	TAG	EXHAUST				SUPPLY		
		GREASE CUP	GRAVITY DAMPER	WALL MOUNT	SIDE DISCHARGE	GRAVITY DAMPER	MOTORIZED DAMPER	WALL MOUNT
1	10'	YES						
2	14'	YES						
3	14'	YES						

CURB ASSEMBLIES

NO.	ON FAN	WEIGHT	ITEM	SIZE
1	# 1	36 LBS	Curb	23.000"W x 23.000"L x 20.000"H Vented Hinged
2	# 2	36 LBS	Curb	23.000"W x 23.000"L x 20.000"H Vented Hinged
3	# 3	36 LBS	Curb	23.000"W x 23.000"L x 20.000"H Vented Hinged
4	# 4	42 LBS	Curb	31.000"W x 31.000"L x 20.000"H

FANS #2 (14'), #3 (14') - EABDU15 EXHAUST FAN



FEATURES:

- ROOF MOUNTED FANS
- RESTAURANT MODEL
- UL705 AND UL762
- AMCA SOUND AND AIR CERTIFIED
- WIRING FROM MOTOR TO DISCONNECT SWITCH
- WEATHERPROOF DISCONNECT
- HIGH HEAT OPERATION 300°F (149°C)
- GREASE CLASSIFICATION TESTING

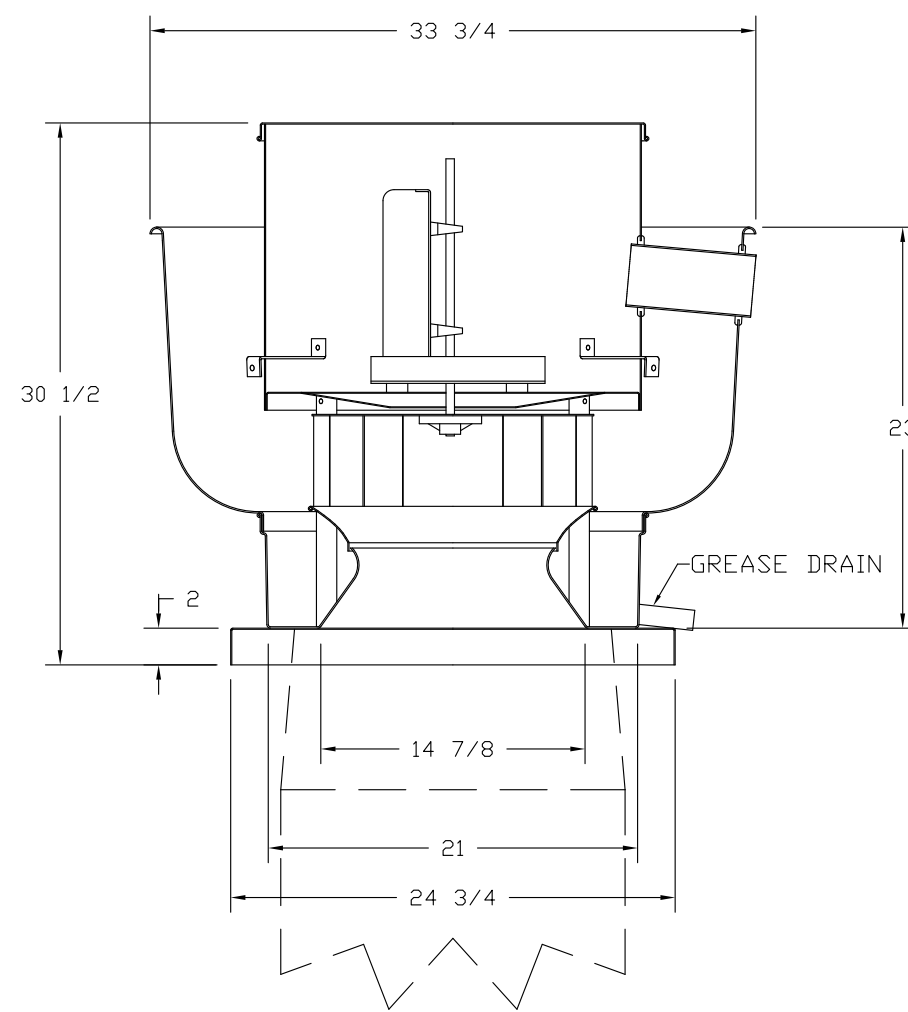
NORMAL TEMPERATURE TEST
EXHAUST FAN MUST OPERATE CONTINUOUSLY WHILE EXHAUSTING AIR AT 300°F (149°C) UNTIL ALL FAN PARTS HAVE REACHED THERMAL EQUILIBRIUM, AND WITHOUT ANY DETERIORATING EFFECTS TO THE FAN WHICH WOULD CAUSE UNSAFE OPERATION.

ABNORMAL FLARE-UP TEST
EXHAUST FAN MUST OPERATE CONTINUOUSLY WHILE EXHAUSTING BURNING GREASE VAPORS AT 600°F (316°C) FOR A PERIOD OF 15 MINUTES WITHOUT THE FAN BECOMING DAMAGED TO ANY EXTENT THAT COULD CAUSE AN UNSAFE CONDITION.

OPTIONS

GREASE BOX

FAN #1 EABDU15 - EXHAUST FAN (10')



FEATURES:

- ROOF MOUNTED FANS
- RESTAURANT MODEL
- UL705 AND UL762
- AMCA SOUND AND AIR CERTIFIED
- WIRING FROM MOTOR TO DISCONNECT SWITCH
- WEATHERPROOF DISCONNECT
- HIGH HEAT OPERATION 300°F (149°C)
- GREASE CLASSIFICATION TESTING

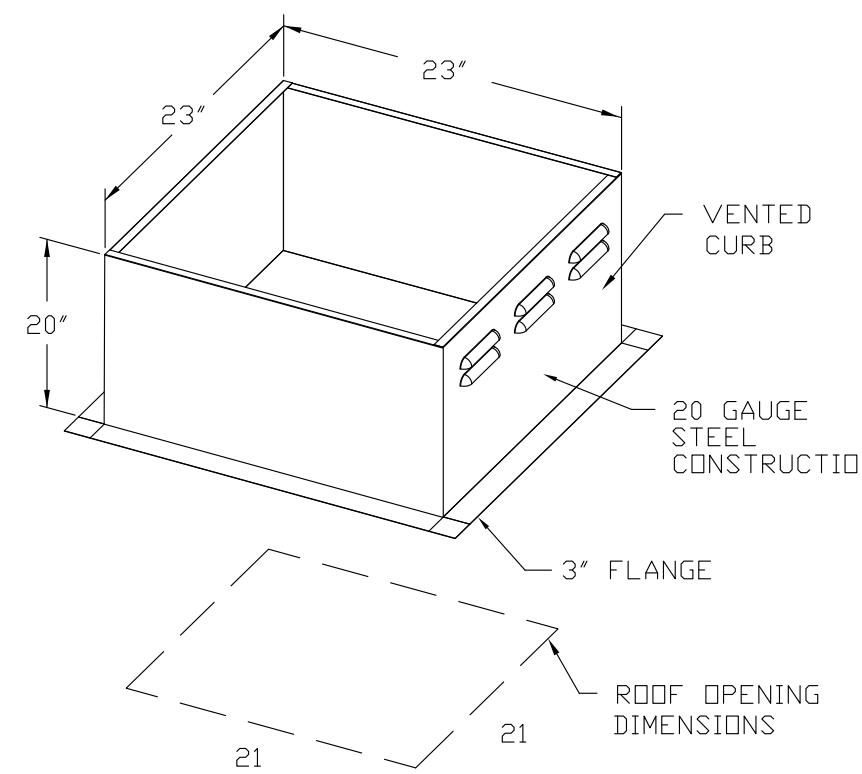
NORMAL TEMPERATURE TEST
EXHAUST FAN MUST OPERATE CONTINUOUSLY WHILE EXHAUSTING AIR AT 300°F (149°C) UNTIL ALL FAN PARTS HAVE REACHED THERMAL EQUILIBRIUM, AND WITHOUT ANY DETERIORATING EFFECTS TO THE FAN WHICH WOULD CAUSE UNSAFE OPERATION.

ABNORMAL FLARE-UP TEST
EXHAUST FAN MUST OPERATE CONTINUOUSLY WHILE EXHAUSTING BURNING GREASE VAPORS AT 600°F (316°C) FOR A PERIOD OF 15 MINUTES WITHOUT THE FAN BECOMING DAMAGED TO ANY EXTENT THAT COULD CAUSE AN UNSAFE CONDITION.

OPTIONS

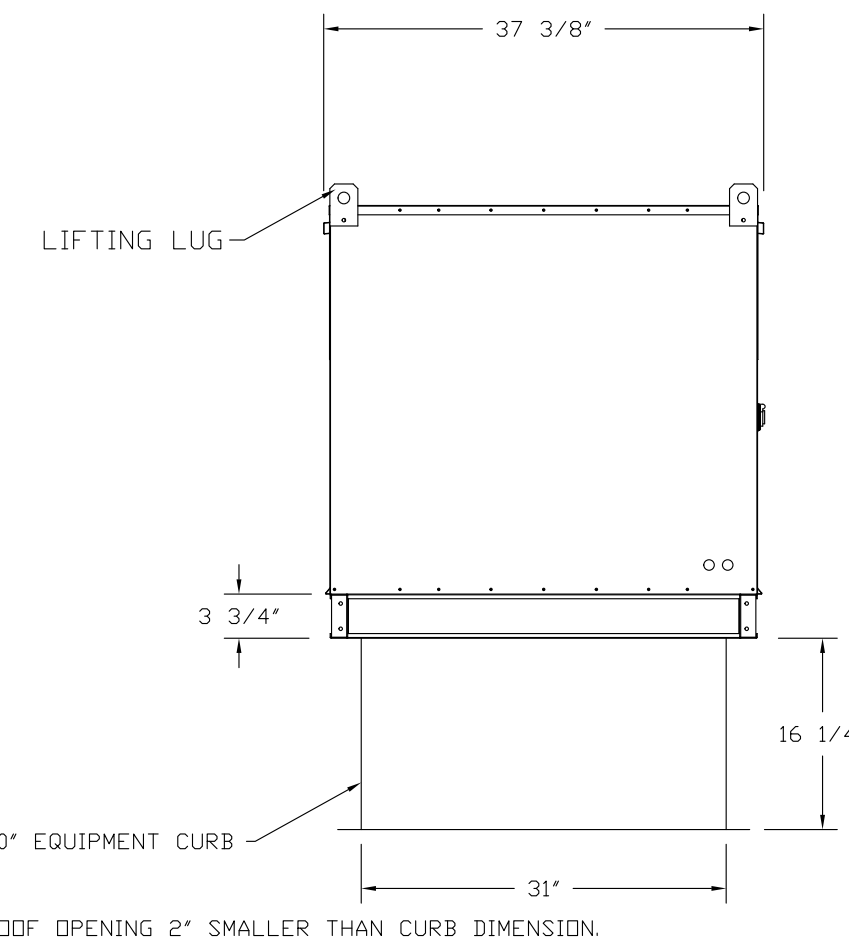
GREASE BOX

FAN #4 EA-A2-G15 - SUPPLY FAN
1. UNTEMPERED SUPPLY UNIT WITH 15" BLOWER IN SIZE #2 HOUSING
2. INTAKE HOOD WITH E2 FILTERS
3. DOWN DISCHARGE - AIR FLOW RIGHT -> LEFT



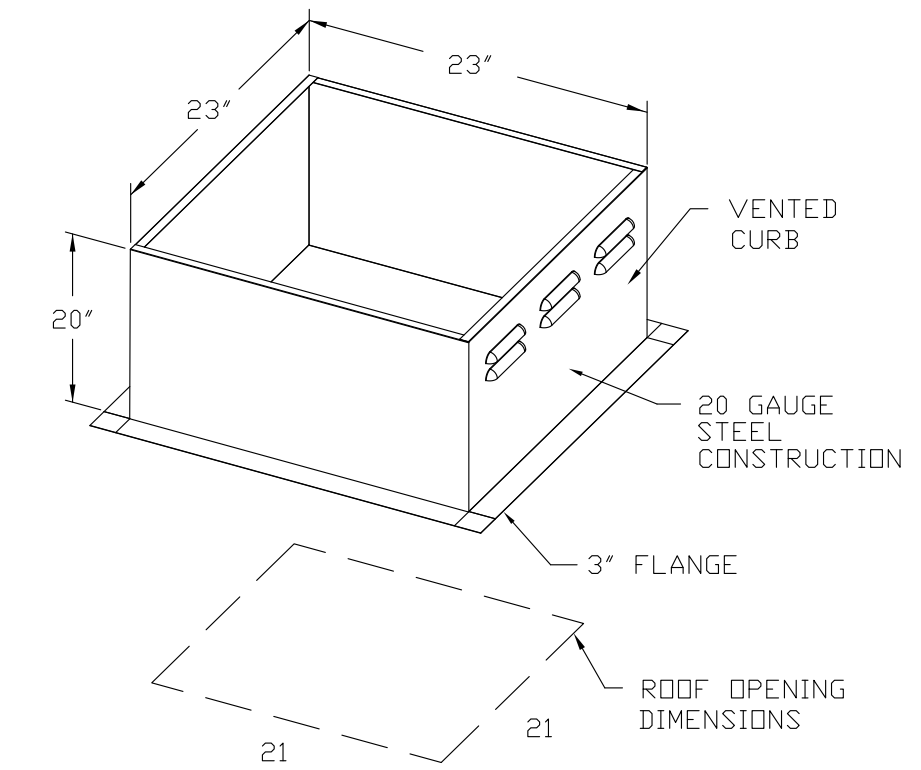
PITCHED CURBS ARE AVAILABLE FOR PITCHED ROOFS.

SPECIFY PITCH:
EXAMPLE: 7/12 PITCH = 30° SLOPE



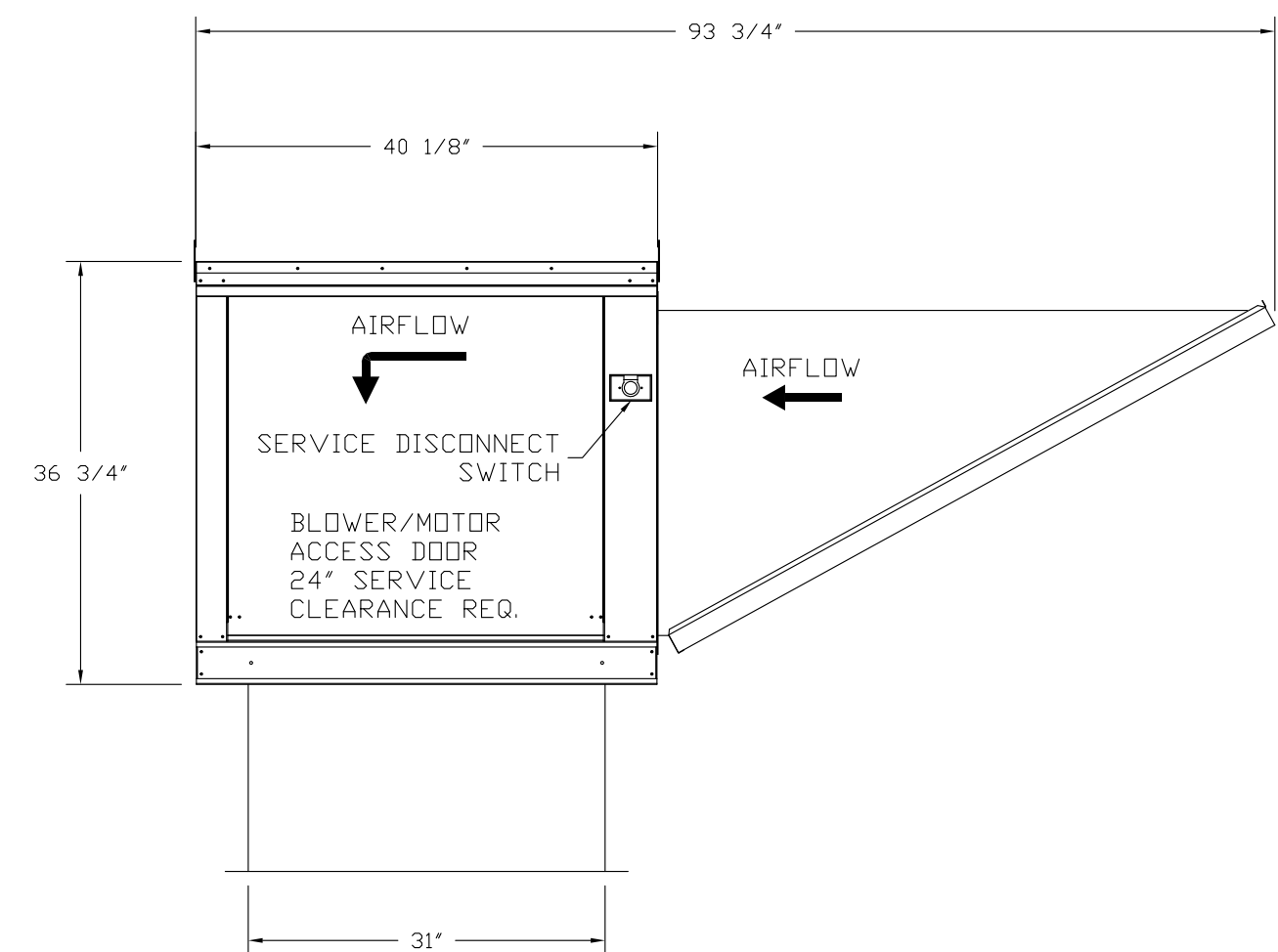
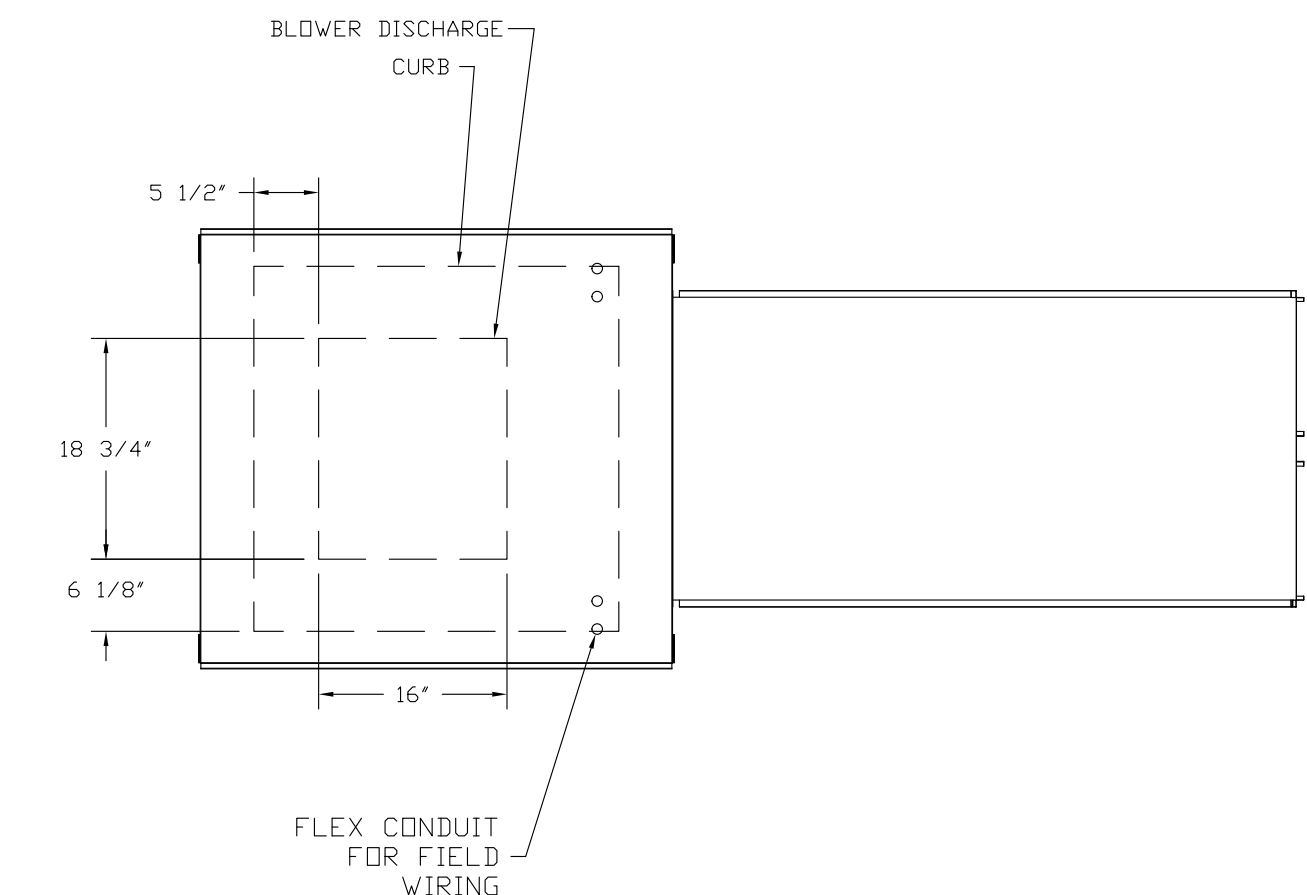
PITCHED CURBS ARE AVAILABLE FOR PITCHED ROOFS.

SPECIFY PITCH:
EXAMPLE: 7/12 PITCH = 30° SLOPE



PITCHED CURBS ARE AVAILABLE FOR PITCHED ROOFS.

SPECIFY PITCH:
EXAMPLE: 7/12 PITCH = 30° SLOPE



REVISIONS

NO.	DESCRIPTION	DATE

Ventilation Direct
Sales & Service

www.ventilationdirect.com

14460 New Falls of Neuse Rd, Suite 149-293, Raleigh, NC, 27614 PHONE: (919) 573-1522 FAX: (919) 573-1523 EMAIL: info@ventilationdirect.com

6 Bears and a Goat
Woodford, VA,

DATE: 10/3/2016

DWG.#:
2791546

DRAWN BY: WRB

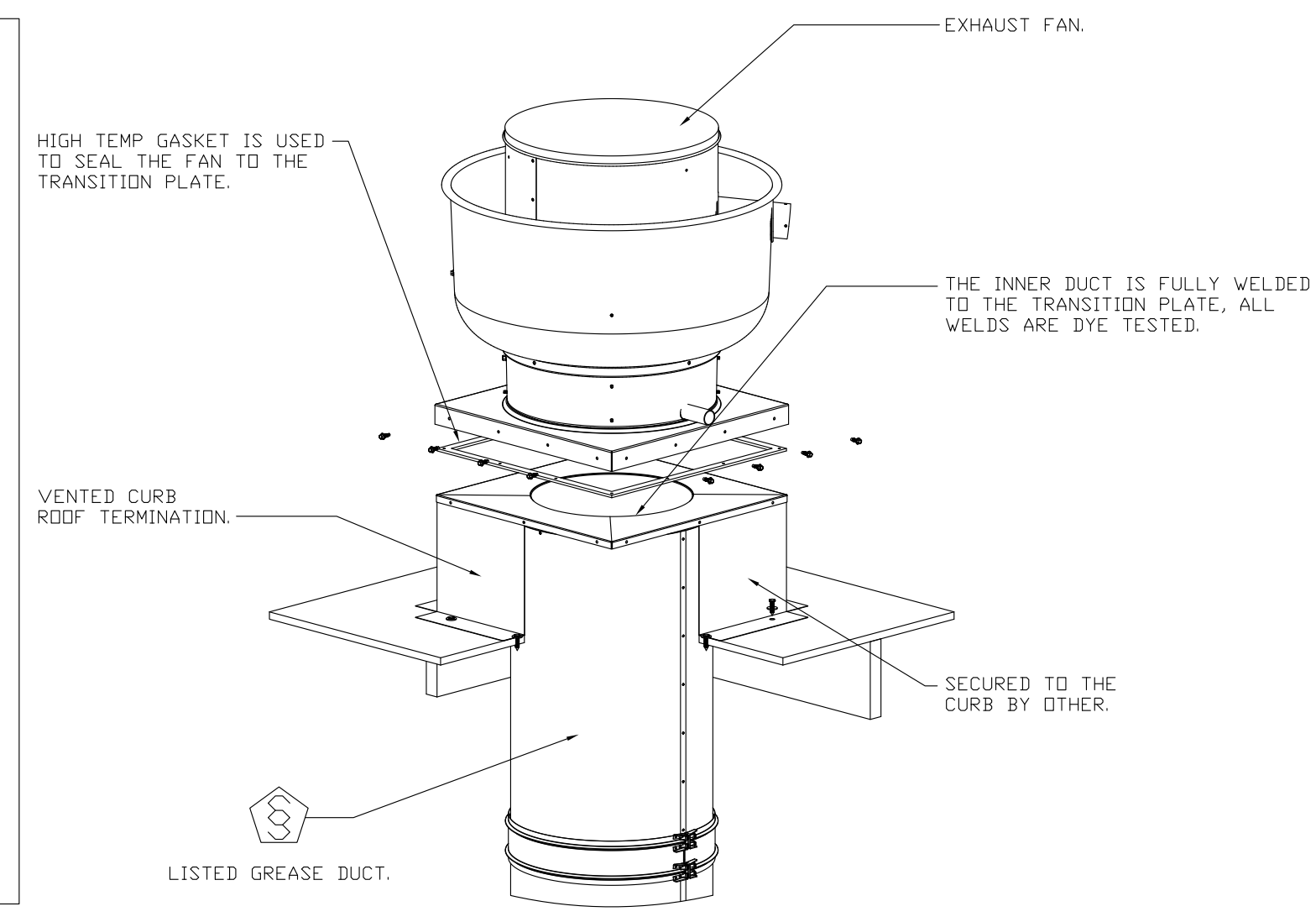
SCALE:
3/4" = 1'-0"

MASTER DRAWING

SHEET NO.
5

GREASE DUCT SPECIFICATIONS:
 PROVIDE GREASE DUCT EQUAL TO VENTILATION DIRECT MODEL "VDW"
 ROUND 20 GAUGE 430 STAINLESS STEEL DUCTWORK. MODEL "VDW"
 IS LISTED TO UL-1978 AND IS INSTALLED USING "V" CLAMP LOCKING
 CONNECTIONS SEALED WITH 3M FIRE BARRIER 2000 PLUS. MODEL "VDW"
 DOES NOT REQUIRE WELDING PROVIDING IT HAS BEEN INSTALLED PER
 THE MANUFACTURES INSTALLATION GUIDE.
 PROVIDE RATED ACCESS DOORS AT EVERY CHANGE IN DIRECTION AND EVERY 12' ON CENTER.
 PER MANUFACTURES LISTING MODEL "VDW" HORIZONTAL RUNS LESS THAN 75 FT. CAN BE
 SLOPED 1/16" PER 12", HORIZONTAL RUNS MORE THAN 75 FT. CAN BE SLOPED 3/16" PER 12".
 DUCT SHOULD BE SLOPED AS MUCH AS POSSIBLE TO REDUCE THE CHANCE OF GREASE
 ACCUMULATION IN HORIZONTAL RUNS.

IF THE DUCT IS WITHIN 18 INCHES OF COMBUSTIBLE MATERIAL, PROVIDE UL-2221 LISTED
 DOUBLE WALL GREASE DUCT EQUAL TO VENTILATION DIRECT MODEL "VDW- 2R, 3R, OR 3Z"
 ROUND 20 GAUGE 430 STAINLESS INNER DUCT INSULATED WITH A 24 GAUGE 430 STAINLESS
 OUTER SHELL.



CUSTOMER APPROVAL TO MANUFACTURE:

Approved as Noted	<input type="checkbox"/>
Approved with NO Exception Taken	<input type="checkbox"/>
Revise and Resubmit	<input type="checkbox"/>
SIGNATURE _____	
Your Title _____ Date _____	

REVISIONS

DESCRIPTION	DATE

Ventilation Direct
 Sales & Service
 www.ventilationdirect.com
 14460 New Falls of Neuse Rd, Suite 149-293, Raleigh, NC, 27614 PHONE: (919) 573-1522 FAX: (919) 573-1523 EMAIL: info@ventilationdirect.com

6 Bears and a Goat
 Woodford, VA,

DATE: 10/3/2016

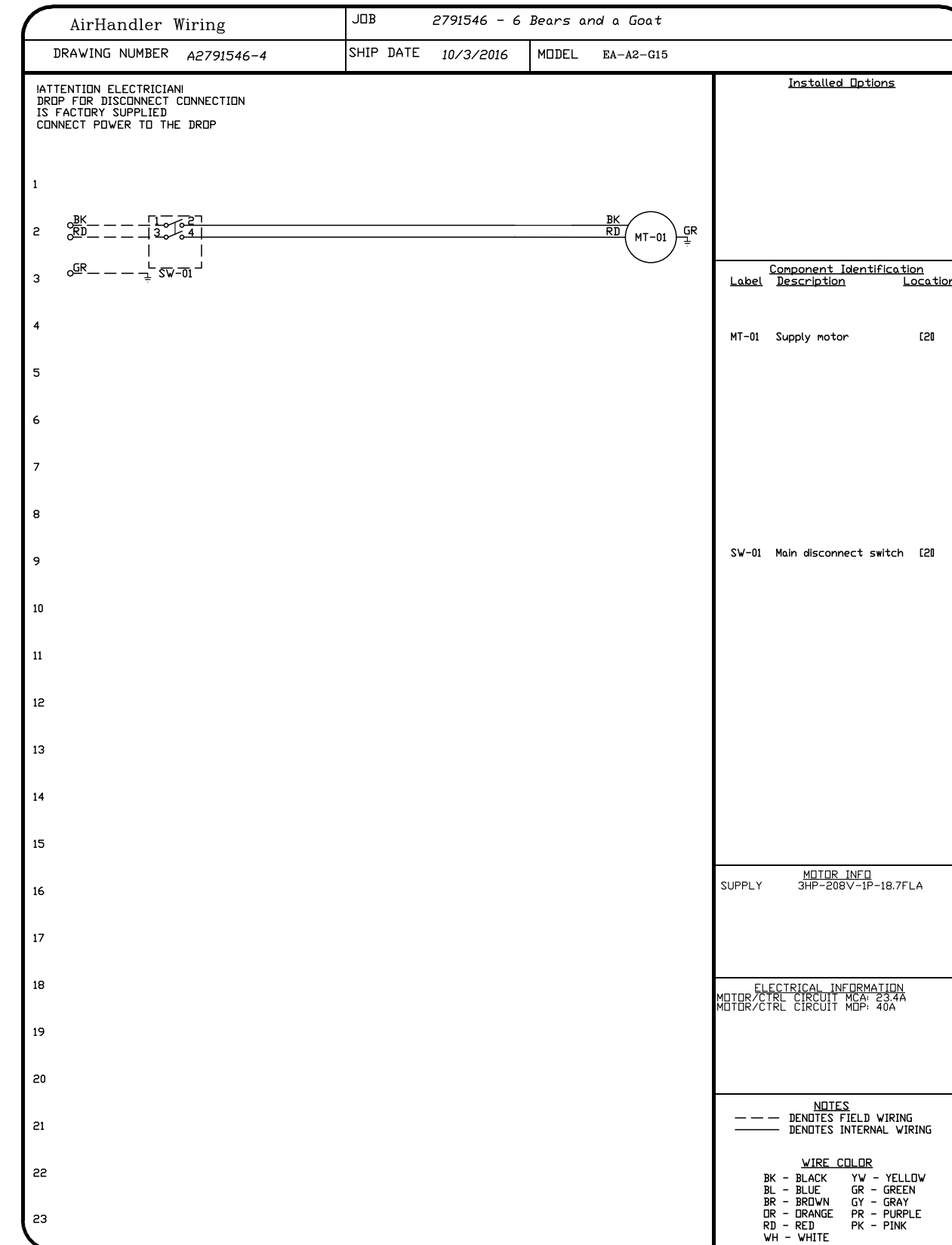
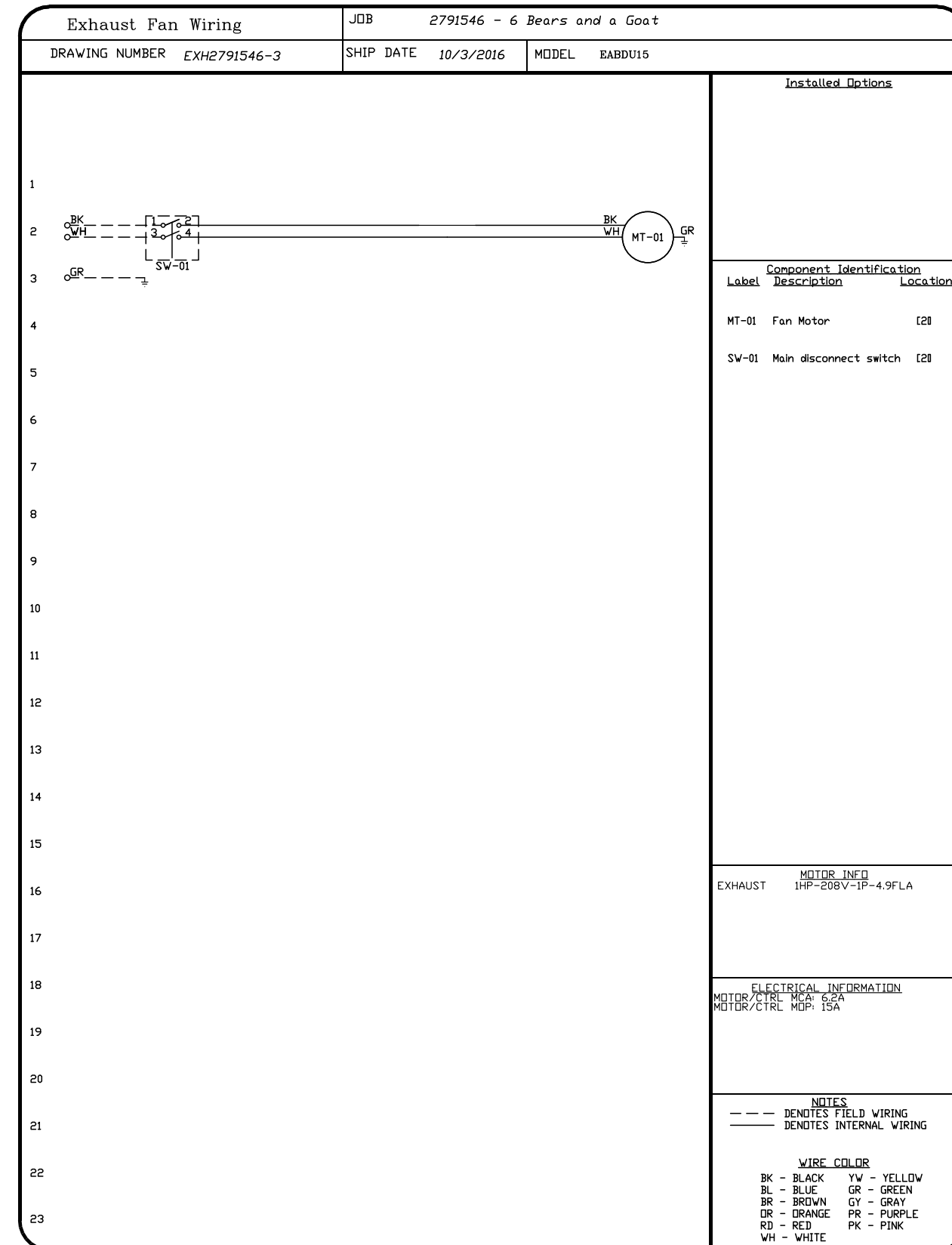
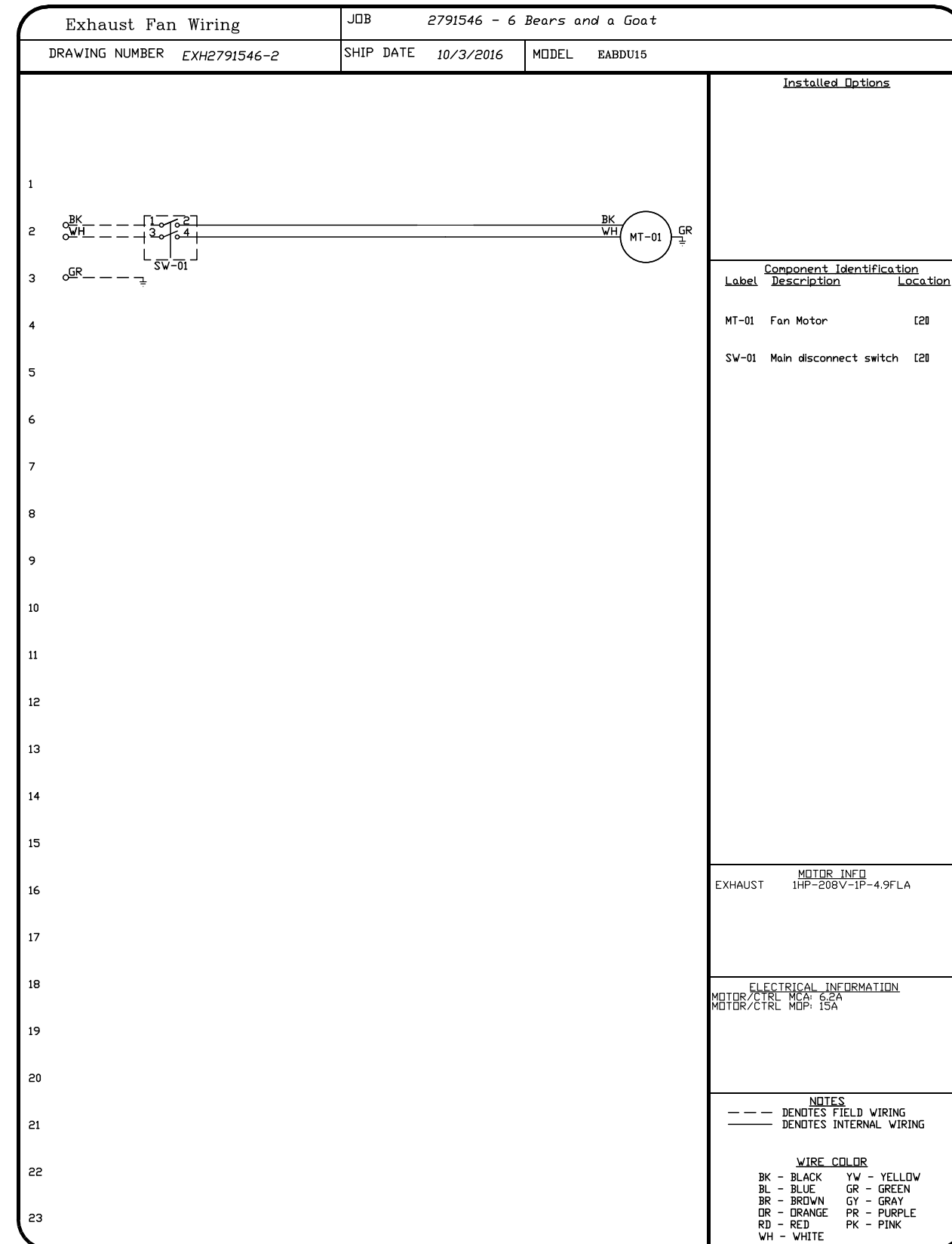
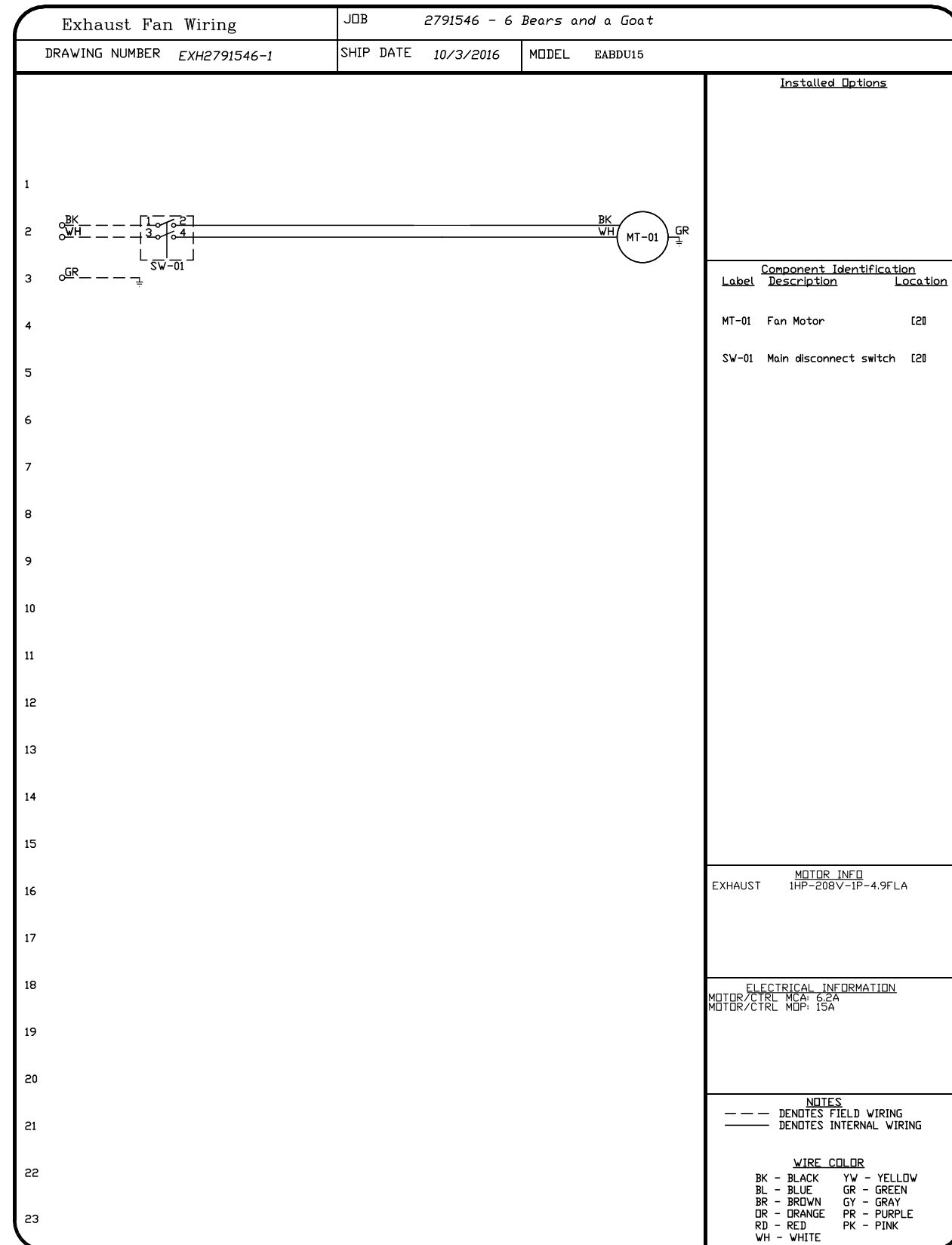
DWG.#:
2791546

DRAWN BY: WRB

SCALE:
3/4" = 1'-0"

MASTER DRAWING

SHEET NO.
6



REVISIONS	
DESCRIPTION	DATE

Sales & Service
www.ventilationdirect.com

6 Bears and a Goat
Woodford, VA,

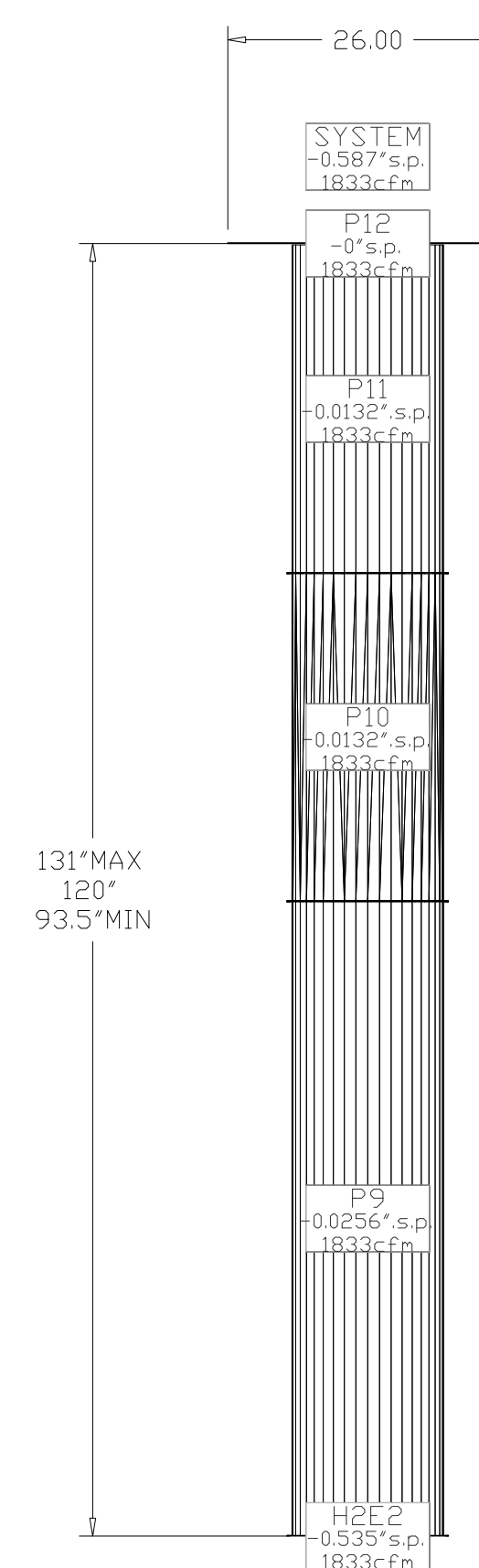
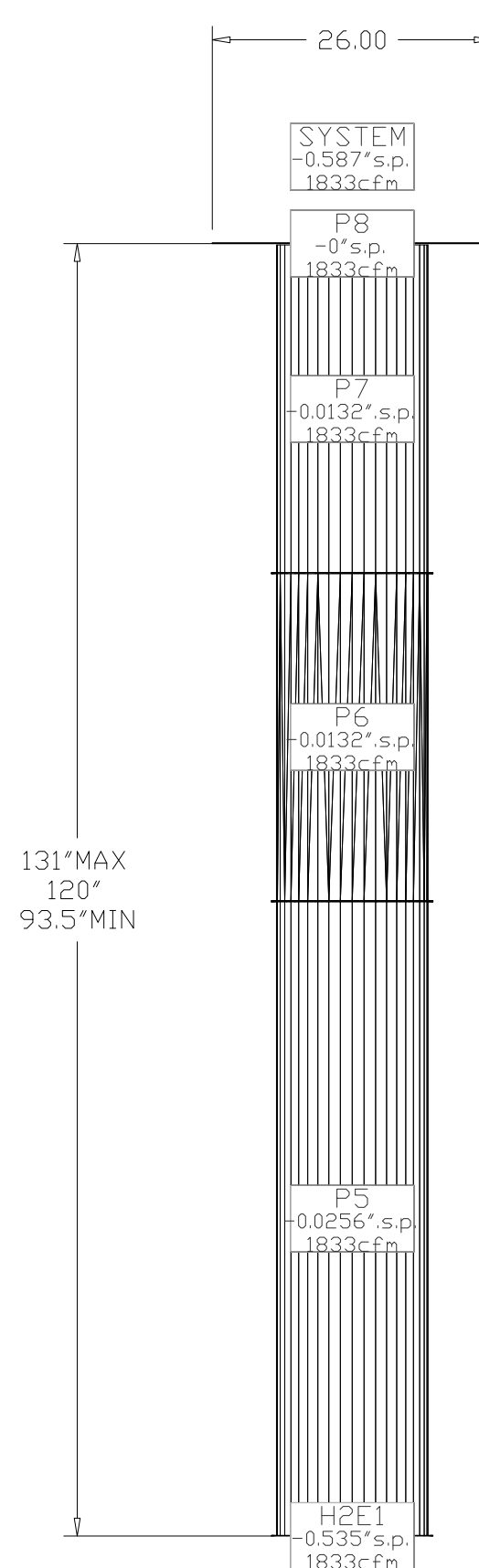
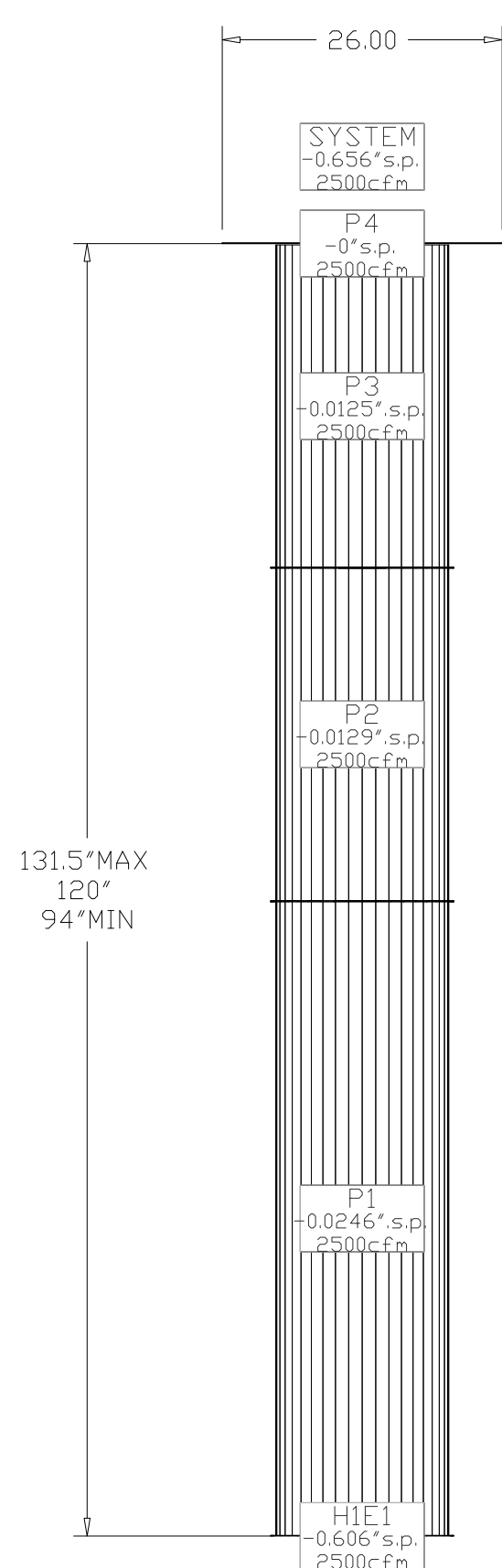
DATE: 10/3/2016
DWG.#: 2791546
DRAWN BY: WRB
SCALE: 3/4" = 1'-0"
MASTER DRAWING

SHEET NO.
7

DuctWork #1 Parts - Job#2791546

Tag	Part #	CFM	S.P.	Weight	Velocity	QTY	Description
P1	VDW1659LT	2500	-0.0246	31.00	1790.49	1	Single Wall Duct 16" diameter, 59' long, flange at both ends. Stainless Steel.
P2	VDW1631LT	2500	-0.0129	18.54	1790.49	1	Single Wall Duct 16" diameter, 31' long, flange at both ends. Stainless Steel.
P3 Assembled w/P4	VDW1648AJDKIT	2500	-0.0125	19.26	1790.49	1	Single Wall Duct Adjustable, 16" diameter, 47.5' long, flange at one end With a 16" Adjustable Collar - Stainless Steel.
P4 Assembled w/P3	VDW2416TP	2500	0	12.00	1790.49	1	Duct to Curb Transition, 24' Curb to 16' Duct, 16 GA Aluminized. Misc. non-standard transition plate.
System at P4		2500	-0.656				
P5	VDW1459LT	1833	-0.0256	26.93	1714.66	1	Single Wall Duct 14" diameter, 59' long, flange at both ends. Stainless Steel.
P6	VDW14305LT	1833	-0.0132	16.22	1714.66	1	Single Wall Duct 14" diameter, 30.5' long, flange at both ends. Stainless Steel.
P7 Assembled w/P8	VDW1448AJDKIT	1833	-0.0132	25.58	1714.66	1	Single Wall Duct Adjustable, 14" diameter, 47.5' long, flange at one end With a 14" Adjustable Collar - Stainless Steel.
P8 Assembled w/P7	VDW2414TP	1833	0	12.00	1714.66	1	Duct to Curb Transition, 24' Curb to 14' Duct, 16 GA Aluminized. Misc. non-standard transition plate.
System at P8		1833	-0.587				
P9	VDW1459LT	1833	-0.0256	26.93	1714.66	1	Single Wall Duct 14" diameter, 59' long, flange at both ends. Stainless Steel.
P10	VDW14305LT	1833	-0.0132	16.22	1714.66	1	Single Wall Duct 14" diameter, 30.5' long, flange at both ends. Stainless Steel.
P11 Assembled w/P12	VDW1448AJDKIT	1833	-0.0132	25.58	1714.66	1	Single Wall Duct Adjustable, 14" diameter, 47.5' long, flange at one end With a 14" Adjustable Collar - Stainless Steel.
P12 Assembled w/P11	VDW2414TP	1833	0	12.00	1714.66	1	Duct to Curb Transition, 24' Curb to 14' Duct, 16 GA Aluminized. Misc. non-standard transition plate.
System at P12		1833	-0.587				
	3M-2000PLUS			0.80		3	Duct - 3M Fire Barrier 2000 Plus Silicone - Used as sealant to Seal Duct Joints.
	VDW14CLASY			1.37		6	Duct 'V' Clamp With new design 14 Ga Brackets, 14' Duct, Assembly.
	VDW16CLASY			1.50		3	Duct 'V' Clamp With new design 14 Ga Brackets, 16' Duct, Assembly.
Total Weight				257.38			

DuctWork #1 Front View



REVISIONS

DESCRIPTION	DATE

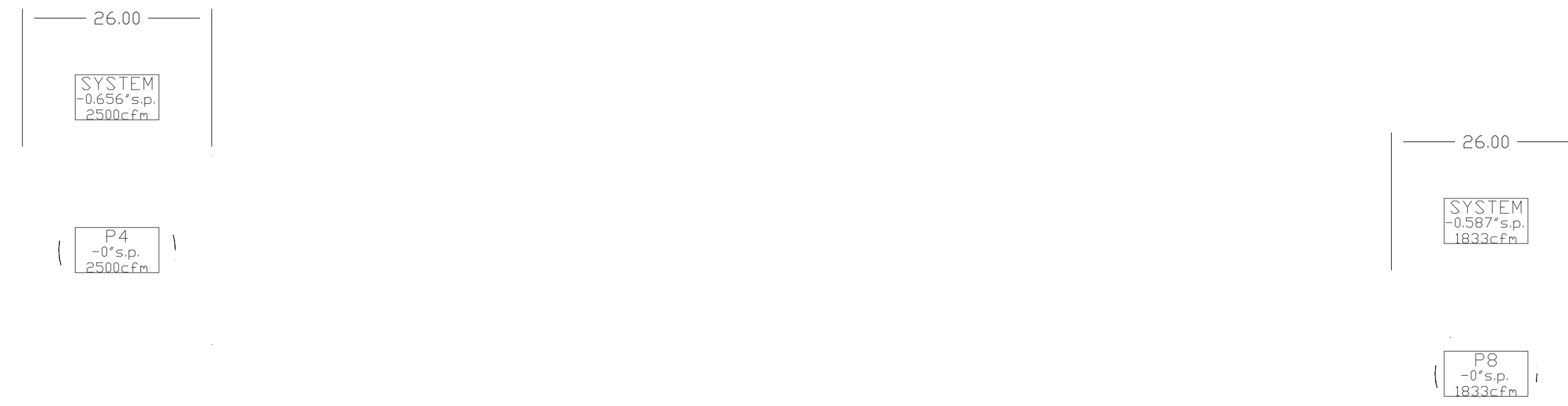
Ventilation Direct
Sales & Service
www.ventilationdirect.com
14460 New Falls of Neuse Rd, Suite 149-293, Raleigh, NC, 27614 PHONE: (919) 573-1522 FAX: (919) 573-1523 EMAIL: info@ventilationdirect.com

6 Bears and a Goat
Woodford, VA

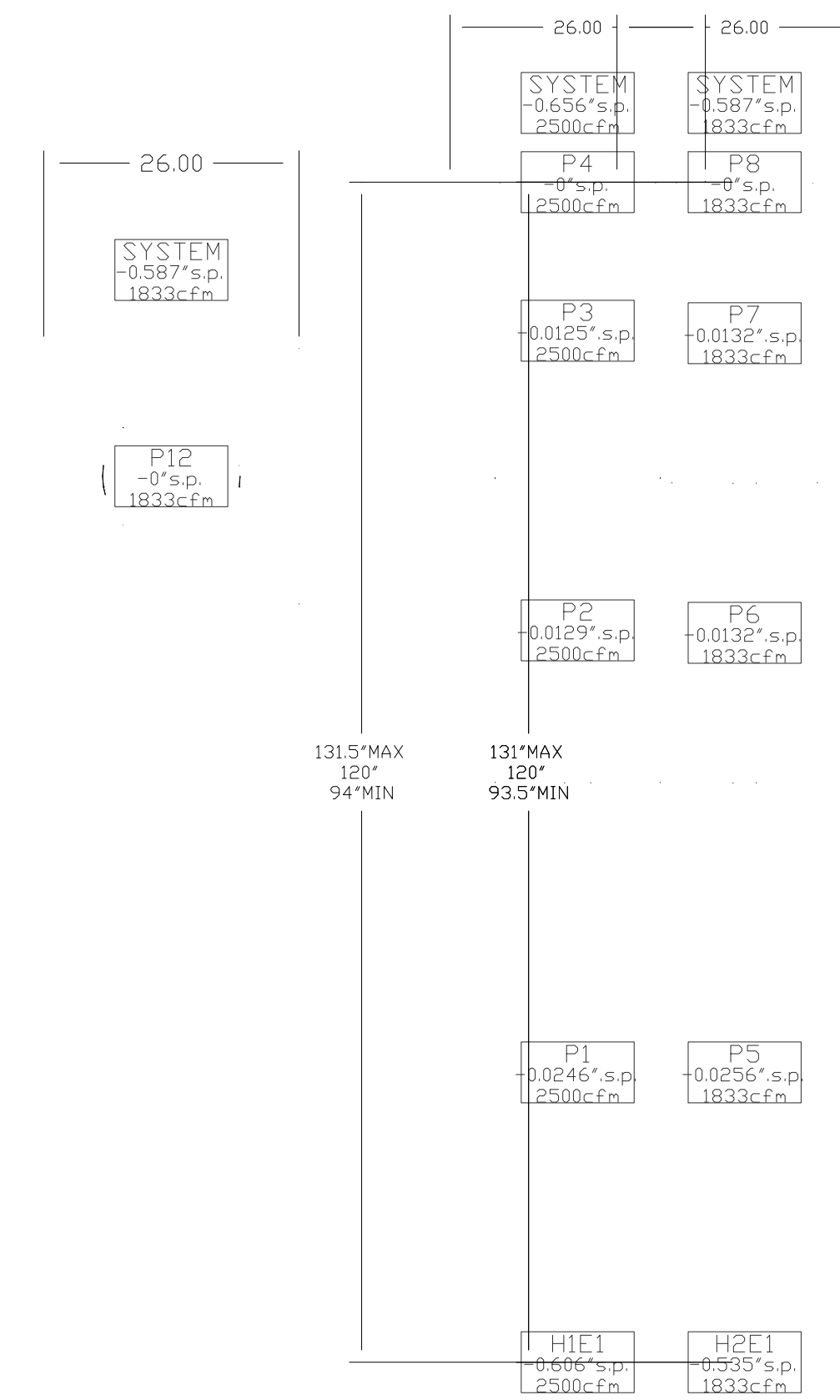
DATE: 10/3/2016
DWG.#: 2791546
DRAWN BY: WRB
SCALE: 3/4" = 1'-0"
MASTER DRAWING

SHEET NO.
9

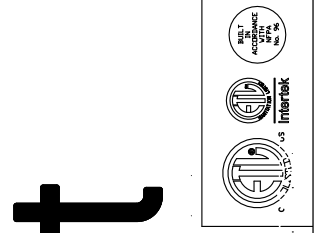
DuctWork #1 Top View



DuctWork #1 Side View



DESCRIPTION	DATE
Δ	
Δ	
Δ	
Δ	



Ventilation Direct

6 Bears and a Goat
Woodford, VA,

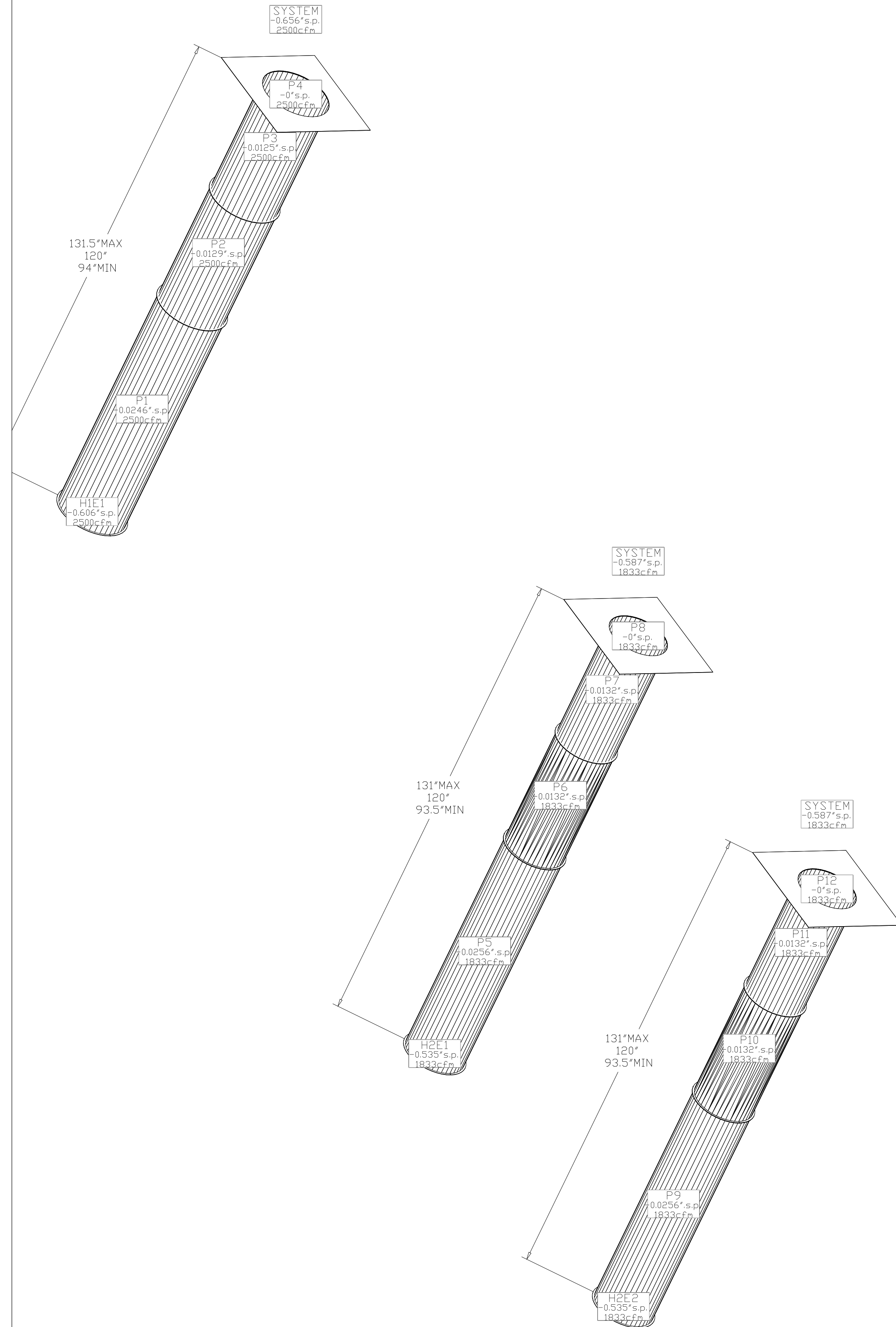
10/3/2016

2791546

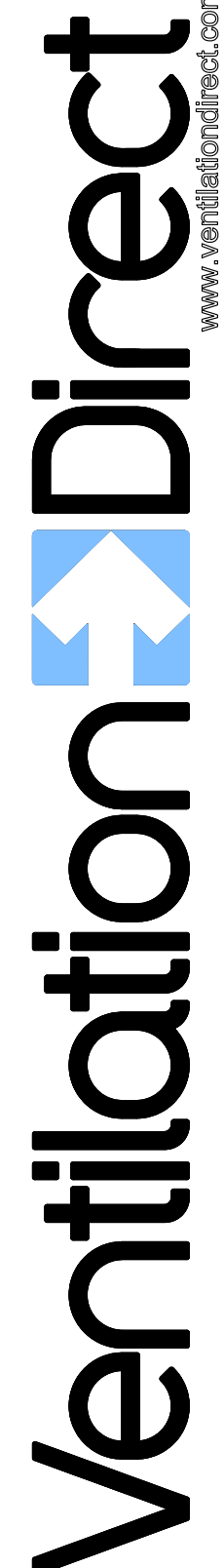
WRB

3/4" = 1'-0"

DuctWork #1 SE View



REVISIONS	
DESCRIPTION	DATE



Ventilation Direct
Sales & Service
www.ventilationdirect.com

14460 New Falls of Neuse Rd, Suite 149-293, Raleigh, NC, 27614 PHONE: (919) 573-1522 FAX: (919) 573-1523 EMAIL: info@ventilationdirect.com

6 Bears and a Goat
Woodford, VA,

DATE: 10/3/2016
 DWG.#: 2791546
 DRAWN BY: WRB
 SCALE: 3/4" = 1'-0"
 MASTER DRAWING

SHEET NO.
11